

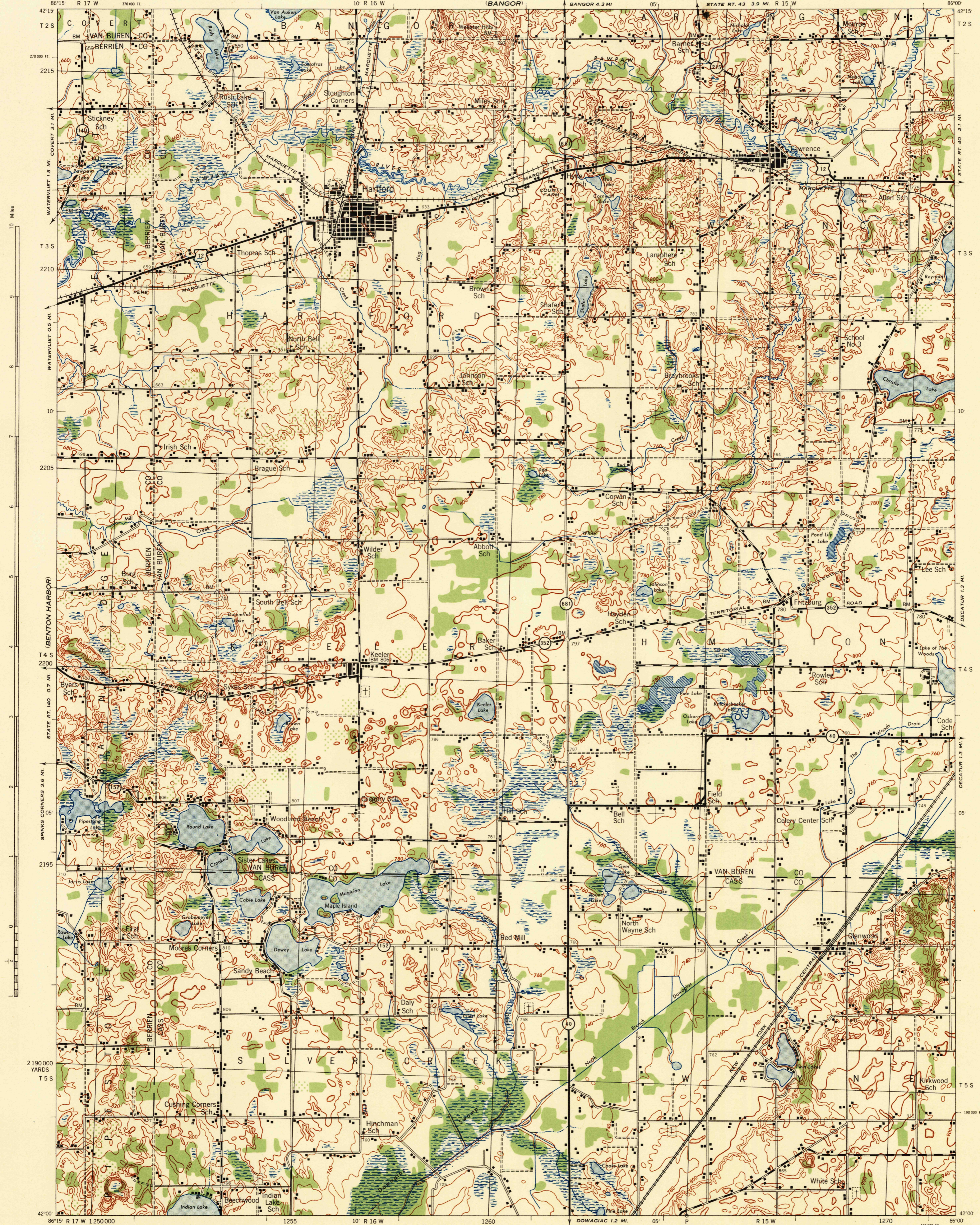
SOUTH HAVEN

MICHIGAN 1:62,500

WAR DEPARTMENT
CORPS OF ENGINEERS, U. S. ARMY

FIRST EDITION - AMS 1

HARTFORD QUADRANGLE
15 MINUTE SERIES



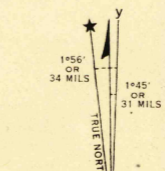
First Edition 1943
 Prepared under the direction of the Chief of Engineers, U. S. Army, by the
 Army Map Service, Quincy unit, 1943
 Based on U. S. G. S. quadrangle, Hartford, 1:62,500 (1930)
 Control by U. S. Geological Survey
 Surveyed in cooperation with the State of Michigan, 1927
 Revised from single lens vertical aerial photographs
 Aerial photography - A. A. Department of Agriculture, 1938
 Polyconic Projection, North American datum 1922

ROAD CLASSIFICATION 1943
 Dashed line - Lanes surface graded, dry weather road
 Solid line - Lanes surface graded, dry weather road
 Dotted line - Secondary, hard surface, all weather road
 Thin solid line - Dirt road
 Dashed line with cross-ticks - State Route
 Circle with number - U. S. Route
 Circle with number - State Route
 More than two lanes indicated by tick along road with tick at point of change

Scale 1:62,500
 1000 0 1000 2000 3000 4000 5000 Yards
 1 2 3 Miles

CONTOUR INTERVAL 20 FEET
 DATUM IS MEAN SEA LEVEL

FIVE THOUSAND YARD GRID COMPUTED FROM GRID SYSTEM FOR PROGRESSIVE MAPS
 IN THE U. S. ZONE C. U. S. C. & G. S. SPECIAL PUBLICATION NO. 59
 THE LAST THREE DIGITS OF THE GRID NUMBERS ARE OBTAINED
 MICHIGAN STATE GRID ZONE CENTRAL IS INDICATED BY DOTTED TICKS
 OUTSIDE THE NEAT LINE AT 10,000 FOOT INTERVALS
 NOTE: SPICES SHOWN FOR REFERENCE CORRECTIONS ARE FOR
 APPROXIMATE MEAN DECLINATION 1943
 ANNUAL MAGNETIC CHANGE 1" INCREASE



Use diagram only to obtain numerical values.
 To determine magnetic north line, connect the
 pivot point "P" on the south edge of the map
 with the value of the angle between GRID
 NORTH and MAGNETIC NORTH, as plotted on
 the degree scale at the north edge of the map.

USGS
 Historical File
 Topographic Division

HARTFORD, MICH.
 N4200 W8600/15

FILE COPY
 Inspection and Editing