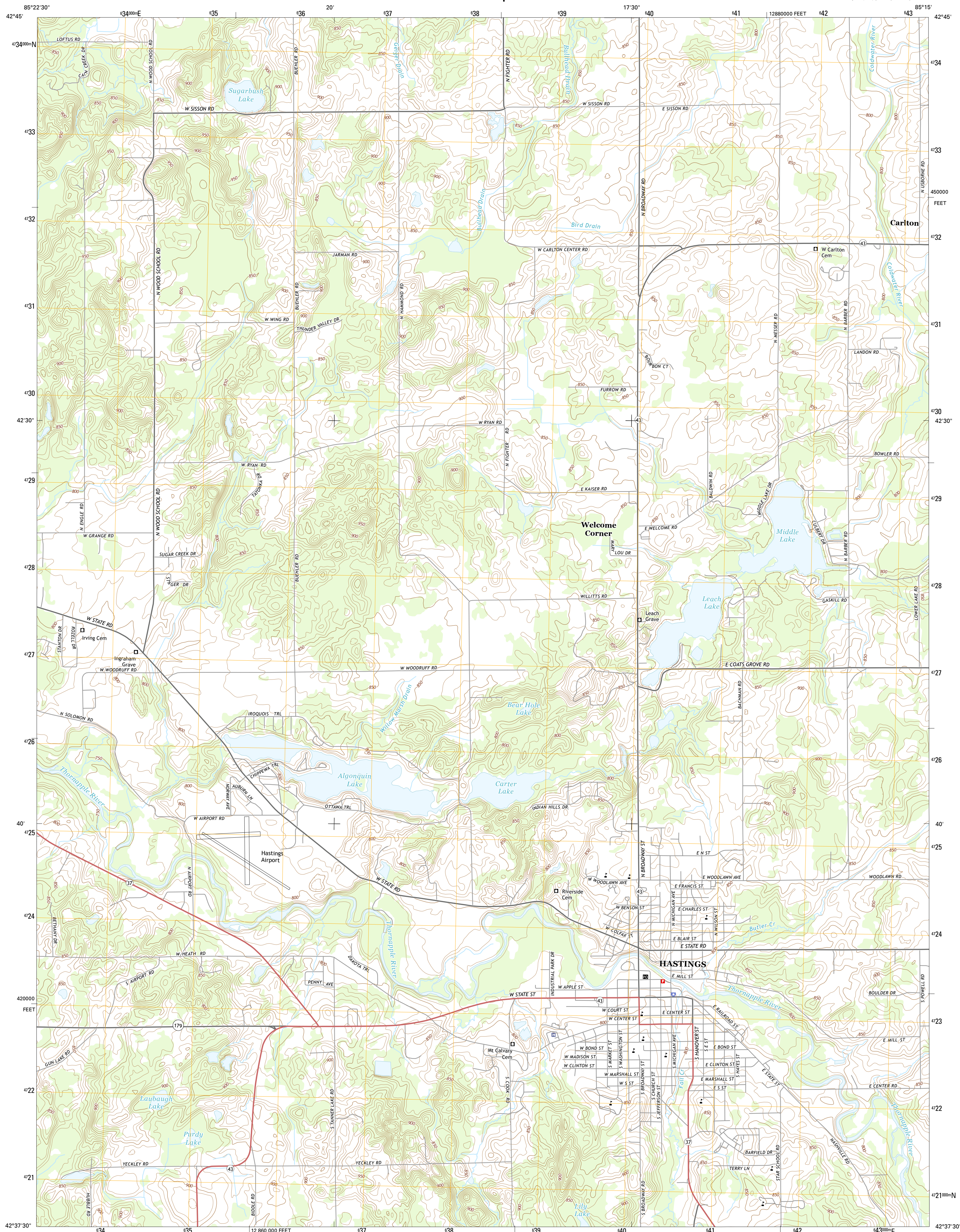




U.S. DEPARTMENT OF THE INTERIOR  
U.S. GEOLOGICAL SURVEY



HASTINGS QUADRANGLE  
MICHIGAN-BARRY CO.  
7.5-MINUTE SERIES



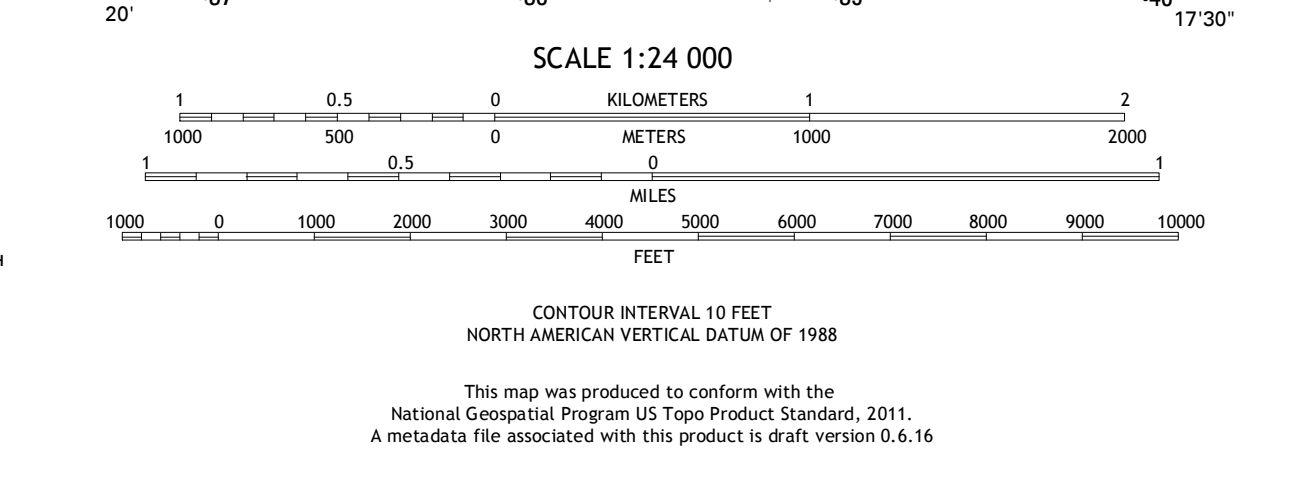
**Produced by the United States Geological Survey**  
 North American Datum of 1983 (NAD83)  
 World Geodetic System of 1984 (WGS84), Projection and  
 1000-meter grid: Universal Transverse Mercator, Zone 16T  
 10 000-foot ticks: Michigan Coordinate System of 1983 (south zone)

This map is not a legal document. Boundaries may be generalized for this map scale. Private lands within government reservations may not be shown. Obtain permission before entering private lands.

Imagery: NADP, June 2012  
 Roads: HERE, ©2013  
 Names: GNS, 2013  
 Hydrography: National Hydrography Dataset, 2012  
 Contours: National Elevation Dataset, 1999  
 Boundaries: Multiple sources; see metadata file 1972 - 2013  
 Public Land Survey System: BLM, 2011

UTM GRID AND 2014 MAGNETIC NORTH DECLINATION AT CENTER OF SHEET

U.S. National Grid
100,000-m Square ID
FN
Grid Zone Designation
16T



ROAD CLASSIFICATION

Expressway	Local Connector
Secondary Hwy	Local Road
Ramp	4WD
Interstate Route	US Route
	State Route

QUADRANGLE LOCATION

1	2	3
4	5	6
7	8	

ADJOINING QUADRANGLES

1 Alto  
 2 Freeport  
 3 Lake Odessa  
 4 Middleville  
 5 Woodland  
 6 Cloverdale  
 7 Dowling  
 8 Maple Grove

**HASTINGS, MI**  
2014

