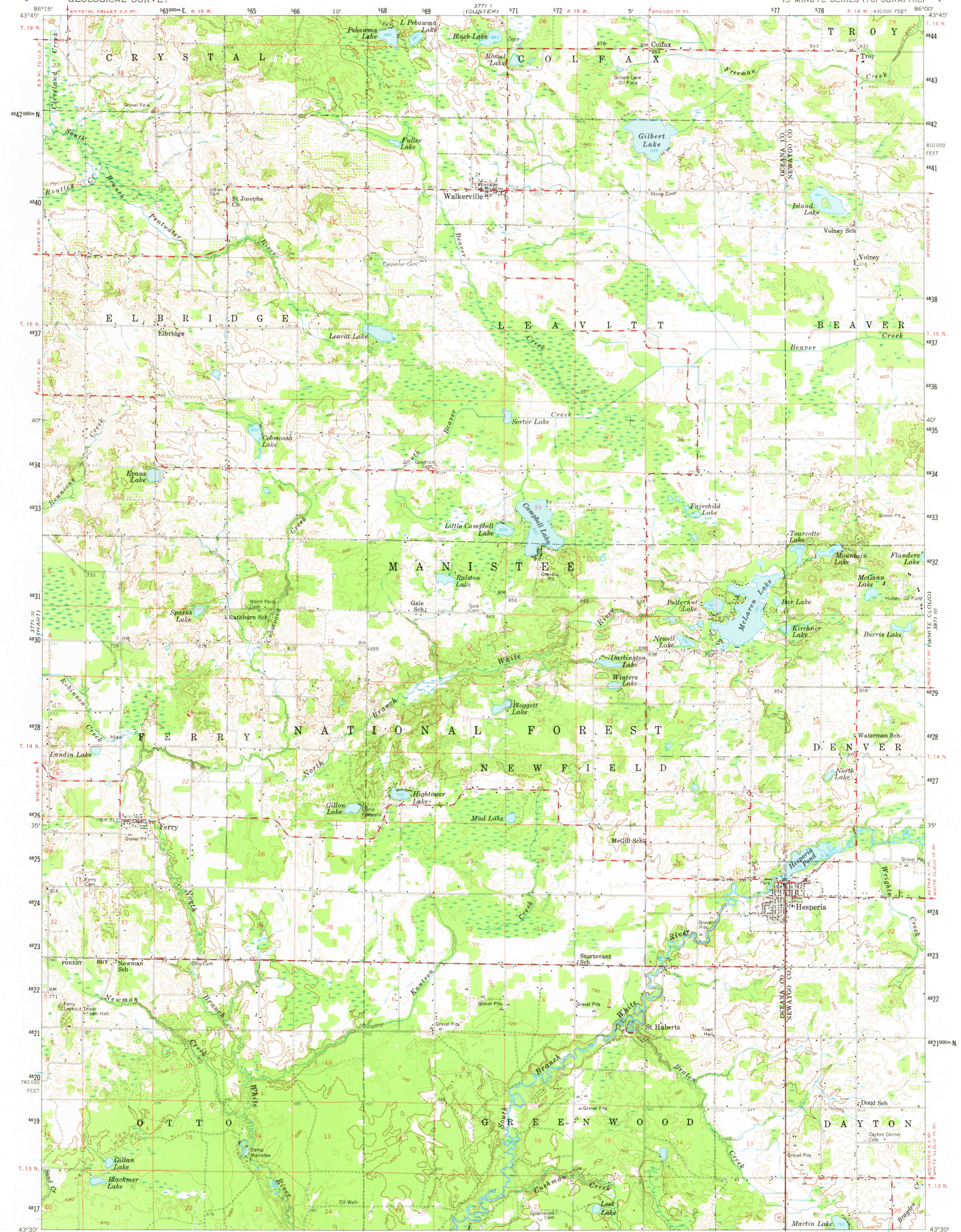


3771 W
(LUDINGTON)

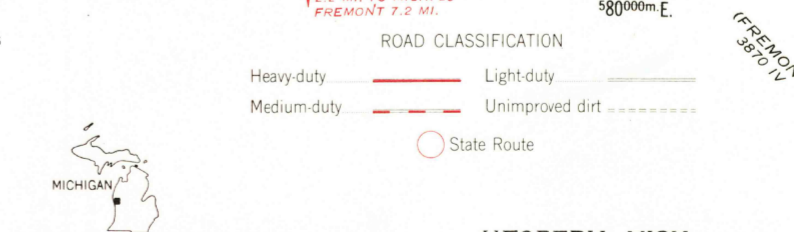
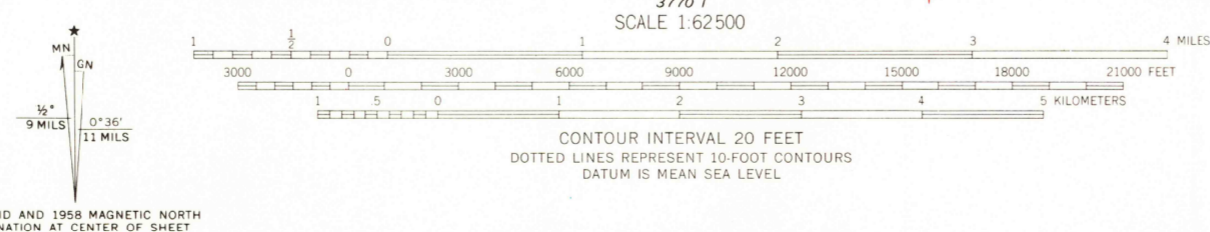
UNITED STATES
DEPARTMENT OF THE INTERIOR
GEOLOGICAL SURVEY

HESPERIA QUADRANGLE
MICHIGAN
15 MINUTE SERIES (TOPOGRAPHIC)

3871 W
(BALDWIN)



Mapped, edited, and published by the Geological Survey
Control by USGS and USC&GS
Topography from aerial photographs by photogrammetric methods
Aerial photographs taken 1955. Field check 1958
Polyconic projection. 1927 North American datum
10,000-foot grid based on Michigan coordinate system, central zone
1000-meter Universal Transverse Mercator grid ticks,
zone 16, shown in blue



UTM GRID AND 1958 MAGNETIC NORTH
DECLINATION AT CENTER OF SHEET

THIS MAP COMPLIES WITH NATIONAL MAP ACCURACY STANDARDS
FOR SALE BY U. S. GEOLOGICAL SURVEY, WASHINGTON, D. C. 20242
A FOLDER DESCRIBING TOPOGRAPHIC MAPS AND SYMBOLS IS AVAILABLE ON REQUEST



HESPERIA, MICH.
N4330-W8600/15
1958
AMS 3771 II-SERIES V762

NOV 2 1981

1900