

4369 II SE (WARREN)
331
PONTIAC (P.O.) 21 MI
332 2'30"

2 350 000 FEET
ROMEO 22 MI
WASHINGTON 16 MI
134

83°00' 42°30"

4707000 N

ROYAL OAK

MADISON HEIGHTS

WARREN

CENTER LINE

FERNDALE

HAZEL PARK

OAKLAND CO

WAYNE CO

DETROIT

HIGHLAND PARK

HAMTRAMCK

DETROIT

DETROIT

DETROIT

DETROIT

DETROIT

DETROIT

DETROIT

DETROIT

DETROIT

DETROIT

DETROIT

DETROIT

DETROIT

DETROIT

DETROIT

DETROIT

DETROIT

DETROIT

DETROIT

DETROIT

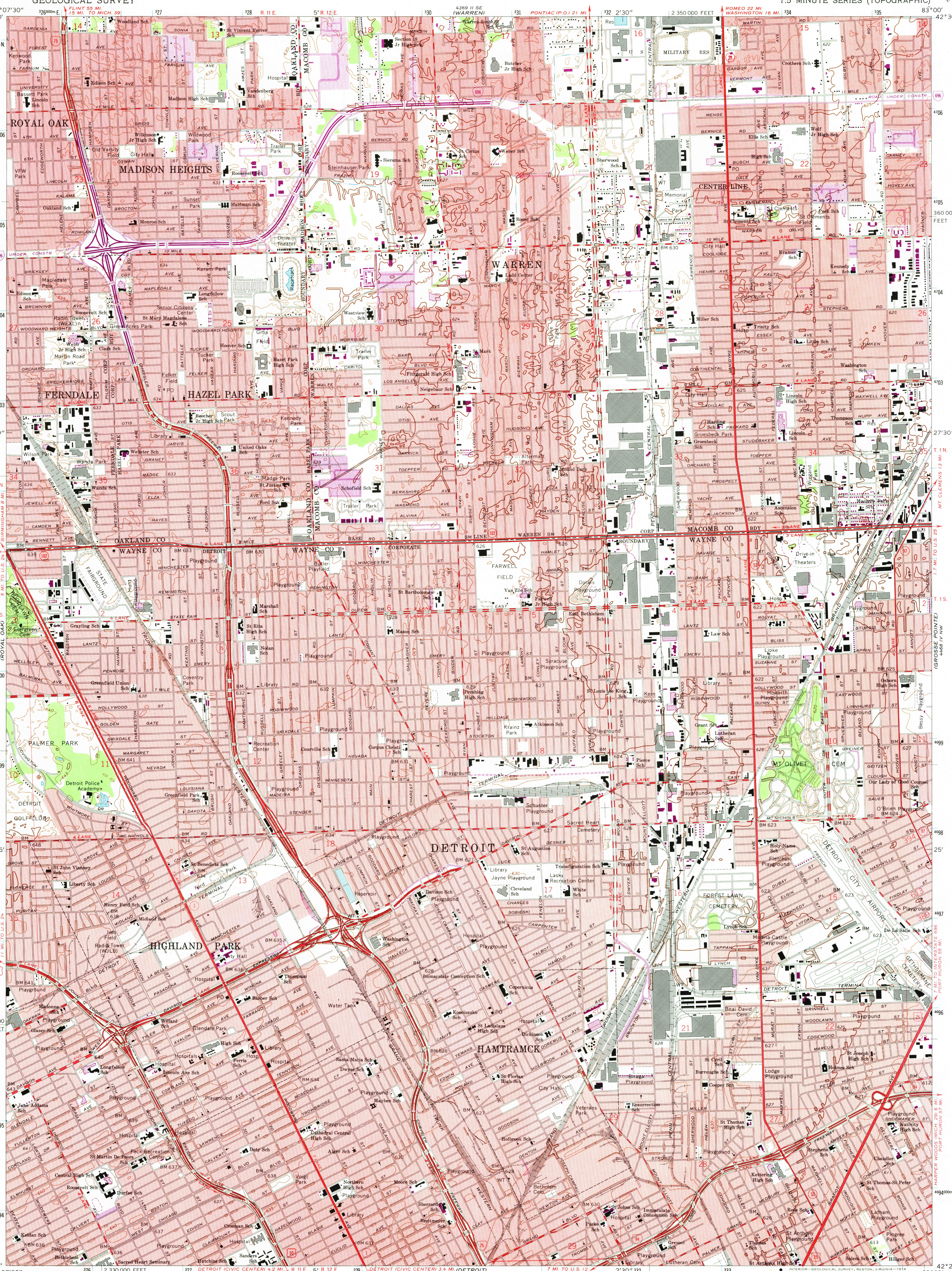
DETROIT

DETROIT

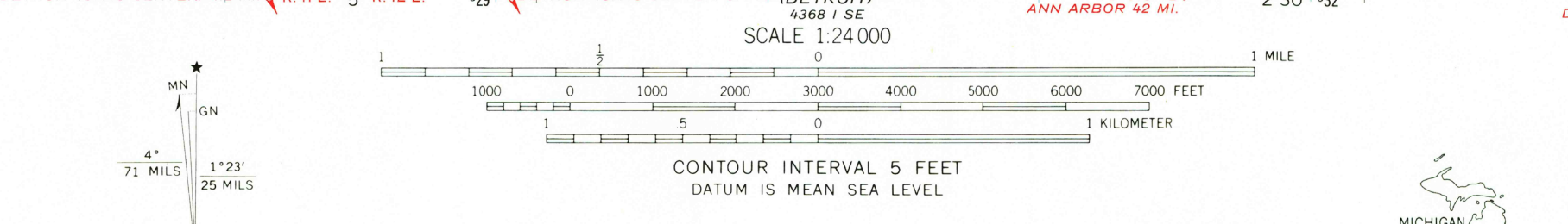
DETROIT

DETROIT

DETROIT



Mapped, edited, and published by the Geological Survey in cooperation with State of Michigan agencies
Control by USGS, USC&GS, and City of Detroit
Planimetry by photogrammetric methods from aerial photographs
Topography by planetable surveys 1938. Revised from aerial photographs taken 1967. Field checked 1968
Polyconic projection. 1927 North American datum
10,000-foot grid based on Michigan coordinate system, south zone
1000-meter Universal Transverse Mercator grid ticks, zone 17, shown in blue
Red tint indicates areas in which only landmark buildings are shown
Revisions shown in purple compiled from aerial photographs taken 1973. This information not field checked
Purple tint indicates extension of urban areas



ROAD CLASSIFICATION	
Primary highway, all weather, hard surface	Light-duty road, all weather, improved surface
Secondary highway, all weather, hard surface	Unimproved road, fair or dry weather
Interstate Route	U.S. Route
	State Route