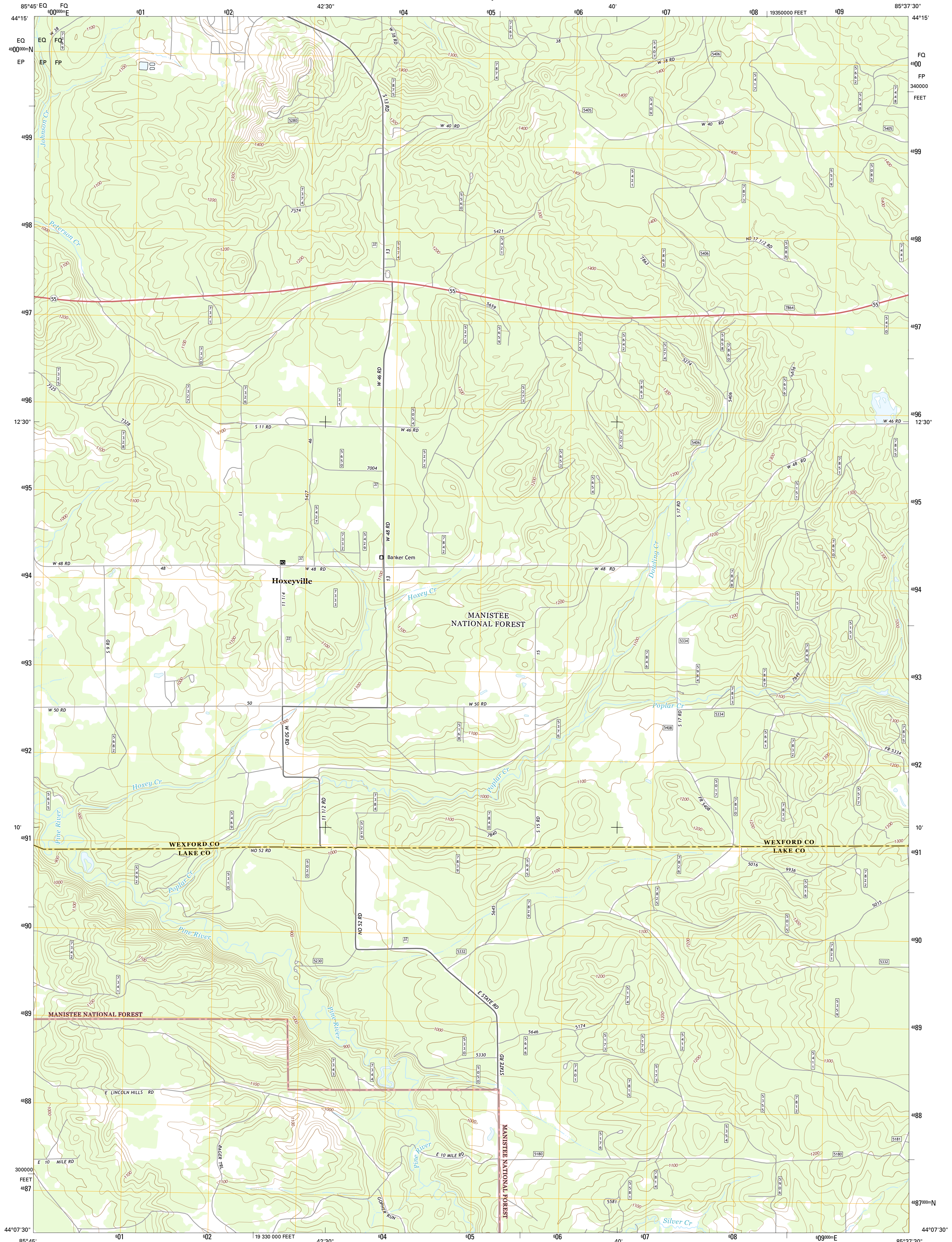




U.S. DEPARTMENT OF THE INTERIOR
U.S. GEOLOGICAL SURVEY



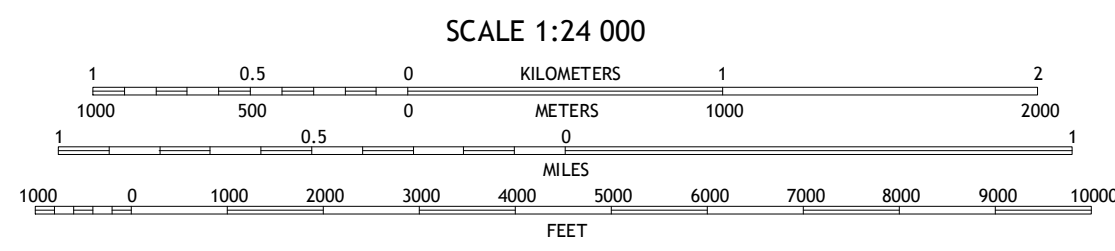
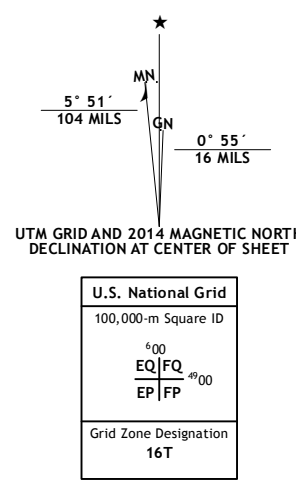
HOXEYVILLE QUADRANGLE
MICHIGAN
7.5-MINUTE SERIES



Produced by the United States Geological Survey
North American Datum of 1983 (NAD83)
World Geodetic System of 1984 (WGS84), Projection and
1 000-meter grid: Universal Transverse Mercator, Zone 16T
10 000-foot ticks: Michigan Coordinate System of 1983 (central zone)

This map is not a legal document. Boundaries may be generalized for this map scale. Private lands within government reservations may not be shown. Obtain permission before entering private lands.

Imagery: N.A.P., June 2012
Roads: HERE, ©2013
Roads within US Forest Service Lands: FSTopo Data with limited Forest Service updates, 2013
Names: GNS, 2013
Hydrography: National Hydrography Dataset, 2012
Contours: National Elevation Dataset, 2006
Boundaries: Multiple sources; see metadata file 1972_2013
Public Land Survey System: BLM, 2011



CONTOUR INTERVAL 20 FEET
NORTH AMERICAN VERTICAL DATUM OF 1988

This map was produced to conform with the
National Geospatial Program US Topo Product Standards, 2011.
A metadata file associated with this product is draft version 0.6.16

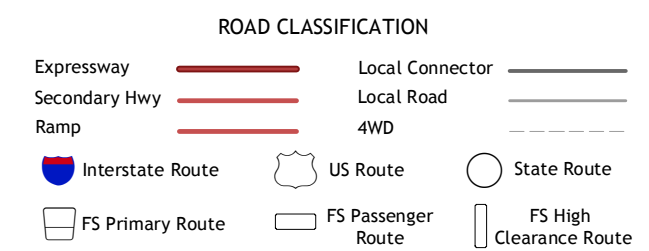


QUADRANGLE LOCATION

1	2	3
4	5	6
7	8	

ADJOINING QUADRANGLES

- Yuma
- Harrietta
- Boon
- Wellston NE
- Axin
- Stewart Lake
- Luther
- Bristol



Check with local Forest Service unit for current travel conditions and restrictions.

HOXEYVILLE, MI
2014

