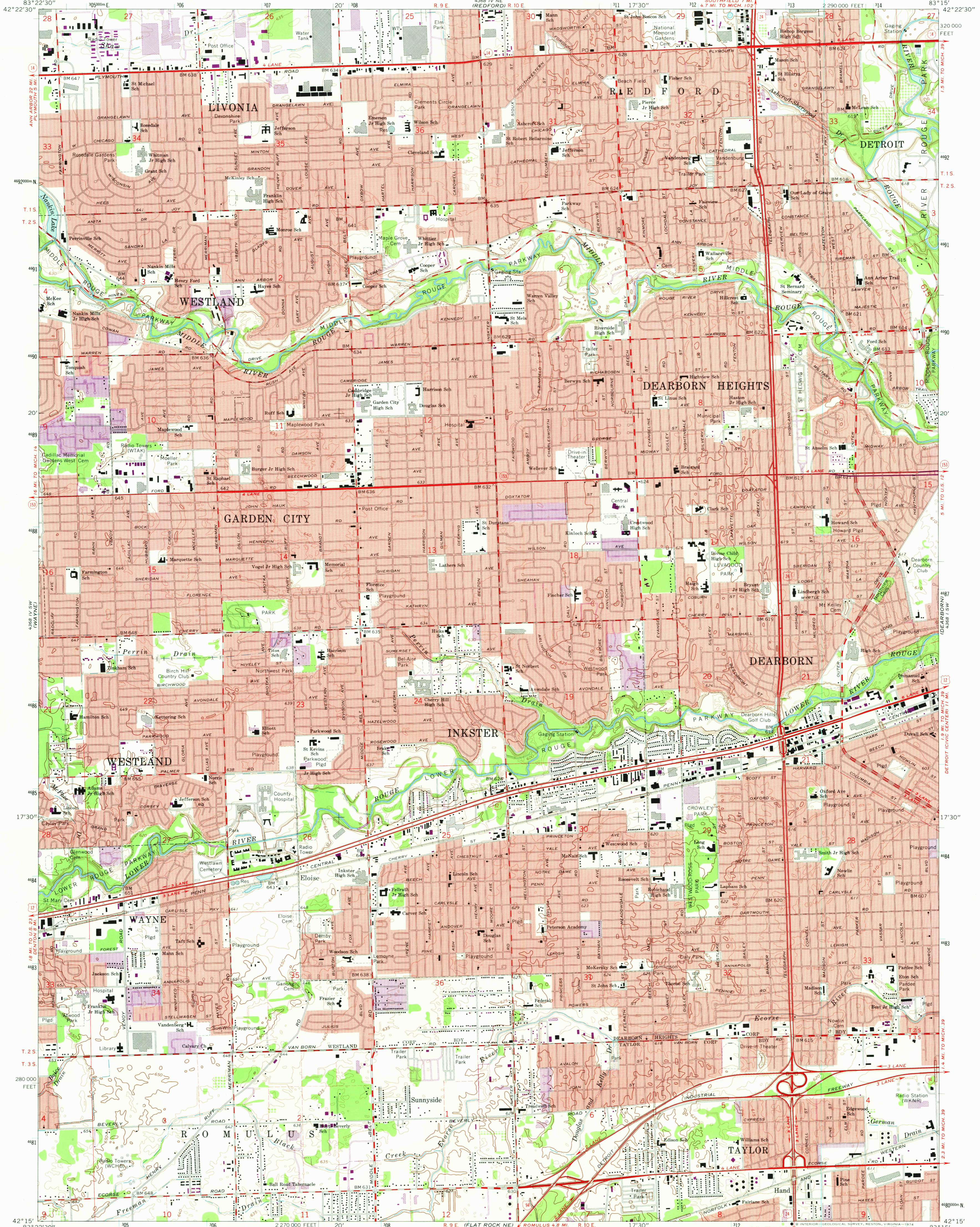


UNITED STATES  
DEPARTMENT OF THE INTERIOR  
GEOLOGICAL SURVEY

INKSTER QUADRANGLE  
MICHIGAN-WAYNE CO.  
7.5 MINUTE SERIES (TOPOGRAPHIC)



Mapped, edited, and published by the Geological Survey in cooperation with State of Michigan agencies  
Control by USGS, USC&GS, City of Detroit, and Wayne County Highway Commission  
Planimetry by photogrammetric methods from aerial photographs  
Topography by planetable surveys 1939-40. Revised from aerial photographs taken 1966-67. Field checked 1968  
Polyconic projection. 1927 North American datum  
10,000-foot grid based on Michigan coordinate system, south zone  
1000-meter Universal Transverse Mercator grid ticks, zone 17, shown in blue  
Red tint indicates areas in which only landmark buildings are shown  
Fine red dashed lines indicate selected fence and field lines where generally visible on aerial photographs. This information is unchecked



ROAD CLASSIFICATION  
Primary highway, all weather, hard surface  
Secondary highway, all weather, unimproved road, fair or dry weather  
Light duty road, all weather, improved surface  
Unimproved road, fair or dry weather  
Interstate Route  
U.S. Route  
State Route

THIS MAP COMPLIES WITH NATIONAL MAP ACCURACY STANDARDS FOR SALE BY U.S. GEOLOGICAL SURVEY, RESTON, VIRGINIA 22092  
A FOLDER DESCRIBING TOPOGRAPHIC MAPS AND SYMBOLS IS AVAILABLE ON REQUEST

Revisions shown in purple compiled from aerial photographs taken 1973. This information not field checked  
Purple tint indicates extension of urban areas

USGS  
Historical File  
Topographic Division

INKSTER, MICH.  
N4215-W8315/7.5  
1968  
PHOTOREVISED 1973  
AMS 4368 IV SE-SERIES 1962  
2/21/75

MAR 12 1975  
2895-W  
150-P  
50 PLAN