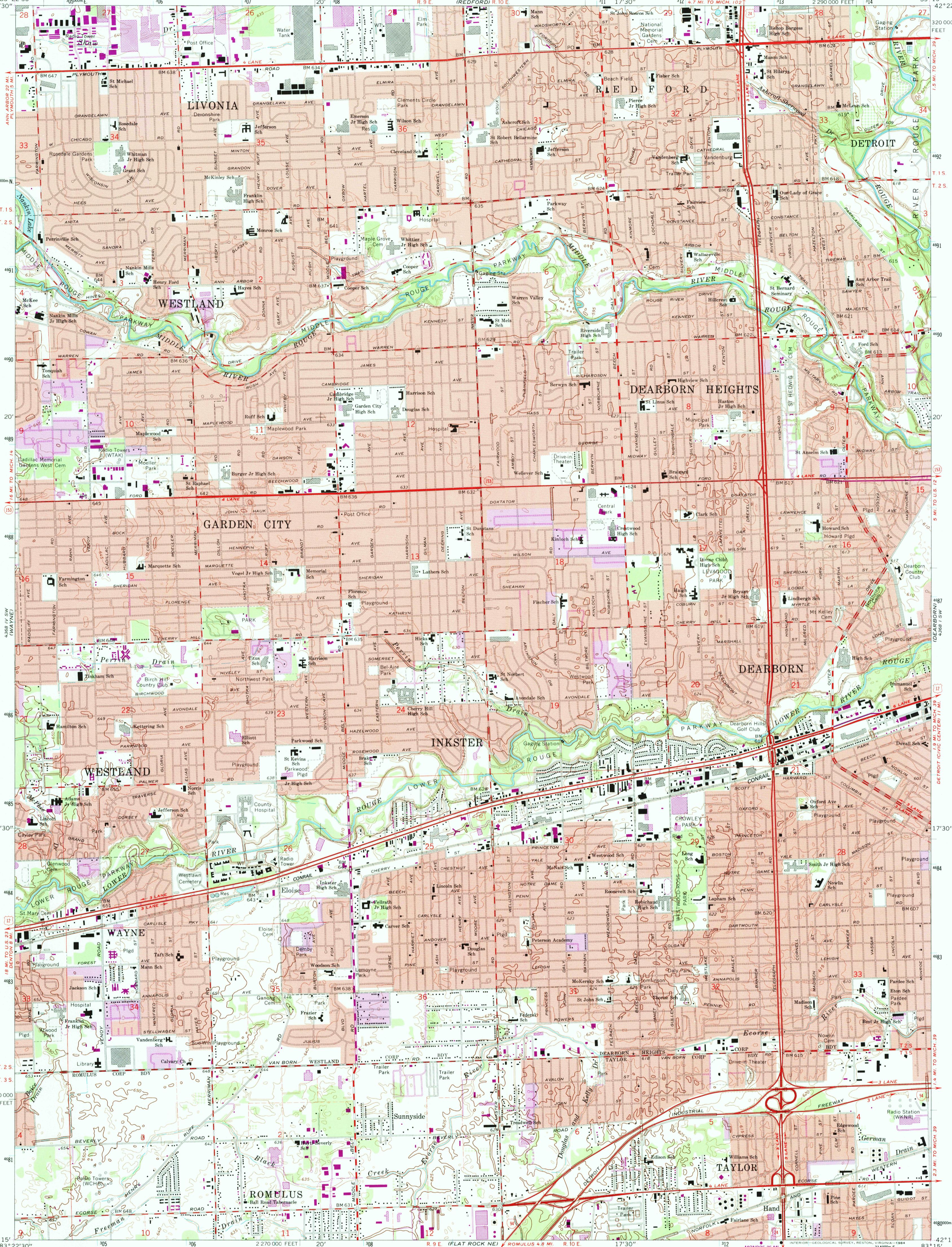


388 1/2 MI NORTHVILLE  
42°22'30"  
83°22'30"  
4920000 N  
T. 1 S  
T. 2 S  
491  
490  
489  
20'  
488  
487  
486  
485  
17°30'  
484  
483  
482  
481  
480  
479  
478  
477  
476  
475  
474  
473  
472  
471  
470  
469  
468  
467  
466  
465  
464  
463  
462  
461  
460  
459  
458  
457  
456  
455  
454  
453  
452  
451  
450  
449  
448  
447  
446  
445  
444  
443  
442  
441  
440  
439  
438  
437  
436  
435  
434  
433  
432  
431  
430  
429  
428  
427  
426  
425  
424  
423  
422  
421  
420  
419  
418  
417  
416  
415  
414  
413  
412  
411  
410  
409  
408  
407  
406  
405  
404  
403  
402  
401  
400  
399  
398  
397  
396  
395  
394  
393  
392  
391  
390  
389  
388  
387  
386  
385  
384  
383  
382  
381  
380  
379  
378  
377  
376  
375  
374  
373  
372  
371  
370  
369  
368  
367  
366  
365  
364  
363  
362  
361  
360  
359  
358  
357  
356  
355  
354  
353  
352  
351  
350  
349  
348  
347  
346  
345  
344  
343  
342  
341  
340  
339  
338  
337  
336  
335  
334  
333  
332  
331  
330  
329  
328  
327  
326  
325  
324  
323  
322  
321  
320  
319  
318  
317  
316  
315  
314  
313  
312  
311  
310  
309  
308  
307  
306  
305  
304  
303  
302  
301  
300  
299  
298  
297  
296  
295  
294  
293  
292  
291  
290  
289  
288  
287  
286  
285  
284  
283  
282  
281  
280  
279  
278  
277  
276  
275  
274  
273  
272  
271  
270  
269  
268  
267  
266  
265  
264  
263  
262  
261  
260  
259  
258  
257  
256  
255  
254  
253  
252  
251  
250  
249  
248  
247  
246  
245  
244  
243  
242  
241  
240  
239  
238  
237  
236  
235  
234  
233  
232  
231  
230  
229  
228  
227  
226  
225  
224  
223  
222  
221  
220  
219  
218  
217  
216  
215  
214  
213  
212  
211  
210  
209  
208  
207  
206  
205  
204  
203  
202  
201  
200  
199  
198  
197  
196  
195  
194  
193  
192  
191  
190  
189  
188  
187  
186  
185  
184  
183  
182  
181  
180  
179  
178  
177  
176  
175  
174  
173  
172  
171  
170  
169  
168  
167  
166  
165  
164  
163  
162  
161  
160  
159  
158  
157  
156  
155  
154  
153  
152  
151  
150  
149  
148  
147  
146  
145  
144  
143  
142  
141  
140  
139  
138  
137  
136  
135  
134  
133  
132  
131  
130  
129  
128  
127  
126  
125  
124  
123  
122  
121  
120  
119  
118  
117  
116  
115  
114  
113  
112  
111  
110  
109  
108  
107  
106  
105  
104  
103  
102  
101  
100  
99  
98  
97  
96  
95  
94  
93  
92  
91  
90  
89  
88  
87  
86  
85  
84  
83  
82  
81  
80  
79  
78  
77  
76  
75  
74  
73  
72  
71  
70  
69  
68  
67  
66  
65  
64  
63  
62  
61  
60  
59  
58  
57  
56  
55  
54  
53  
52  
51  
50  
49  
48  
47  
46  
45  
44  
43  
42  
41  
40  
39  
38  
37  
36  
35  
34  
33  
32  
31  
30  
29  
28  
27  
26  
25  
24  
23  
22  
21  
20  
19  
18  
17  
16  
15  
14  
13  
12  
11  
10  
9  
8  
7  
6  
5  
4  
3  
2  
1  
0  
1  
2  
3  
4  
5  
6  
7  
8  
9  
10  
11  
12  
13  
14  
15  
16  
17  
18  
19  
20  
21  
22  
23  
24  
25  
26  
27  
28  
29  
30  
31  
32  
33  
34  
35  
36  
37  
38  
39  
40  
41  
42  
43  
44  
45  
46  
47  
48  
49  
50  
51  
52  
53  
54  
55  
56  
57  
58  
59  
60  
61  
62  
63  
64  
65  
66  
67  
68  
69  
70  
71  
72  
73  
74  
75  
76  
77  
78  
79  
80  
81  
82  
83  
84  
85  
86  
87  
88  
89  
90  
91  
92  
93  
94  
95  
96  
97  
98  
99  
100

UNITED STATES  
DEPARTMENT OF THE INTERIOR  
GEOLOGICAL SURVEY

INKSTER QUADRANGLE  
MICHIGAN—WAYNE CO.  
7.5 MINUTE SERIES (TOPOGRAPHIC)



Mapped, edited, and published by the Geological Survey  
in cooperation with State of Michigan agencies  
Control by USGS, USC&GS, City of Detroit, and  
Wayne County Highway Commission  
Planimetry by photogrammetric methods from aerial photographs  
Topography by planimetric surveys 1939-40. Revised from aerial  
photographs taken 1966-67. Field checked 1968  
Polyconic projection. 1927 North American datum  
10,000-foot grid based on Michigan coordinate system, south zone  
1000-meter Universal Transverse Mercator grid ticks,  
zone 17, shown in blue  
Red tint indicates areas in which only landmark buildings are shown  
To place on the predicted North American Datum 1983,  
move the projection lines 7 meters west as shown by  
dashed corner ticks

UTM GRID AND 1983 MAGNETIC NORTH  
DECLINATION AT CENTER OF SHEET  
SCALE 1:24,000  
CONTOUR INTERVAL 5 FEET  
NATIONAL GEODETIC VERTICAL DATUM OF 1929  
FOR SALE BY U.S. GEOLOGICAL SURVEY, RESTON, VIRGINIA 22092  
AND GEOLOGICAL SURVEY DIVISION  
MICHIGAN DEPARTMENT OF NATURAL RESOURCES, LANSING, MICHIGAN 48909  
A FOLDER DESCRIBING TOPOGRAPHIC MAPS AND SYMBOLS IS AVAILABLE ON REQUEST

ROAD CLASSIFICATION  
Primary highway, all weather, hard surface  
Secondary highway, all weather, hard surface  
Light-duty road, all weather, improved surface  
Unimproved road, fair or dry weather  
Interstate Route  
U. S. Route  
State Route

Revisions shown in purple compiled from aerial photographs taken 1982 and other sources.  
This information not field checked. Map edited 1983  
Purple tint indicates extension of urban area

INKSTER, MICH.  
N4215—W8315/7.5  
1968  
PHOTOREVISED 1983  
DMA 4368 IV SE—SERIES V862  
USGS AND HISTORICAL MAP REVISIONS