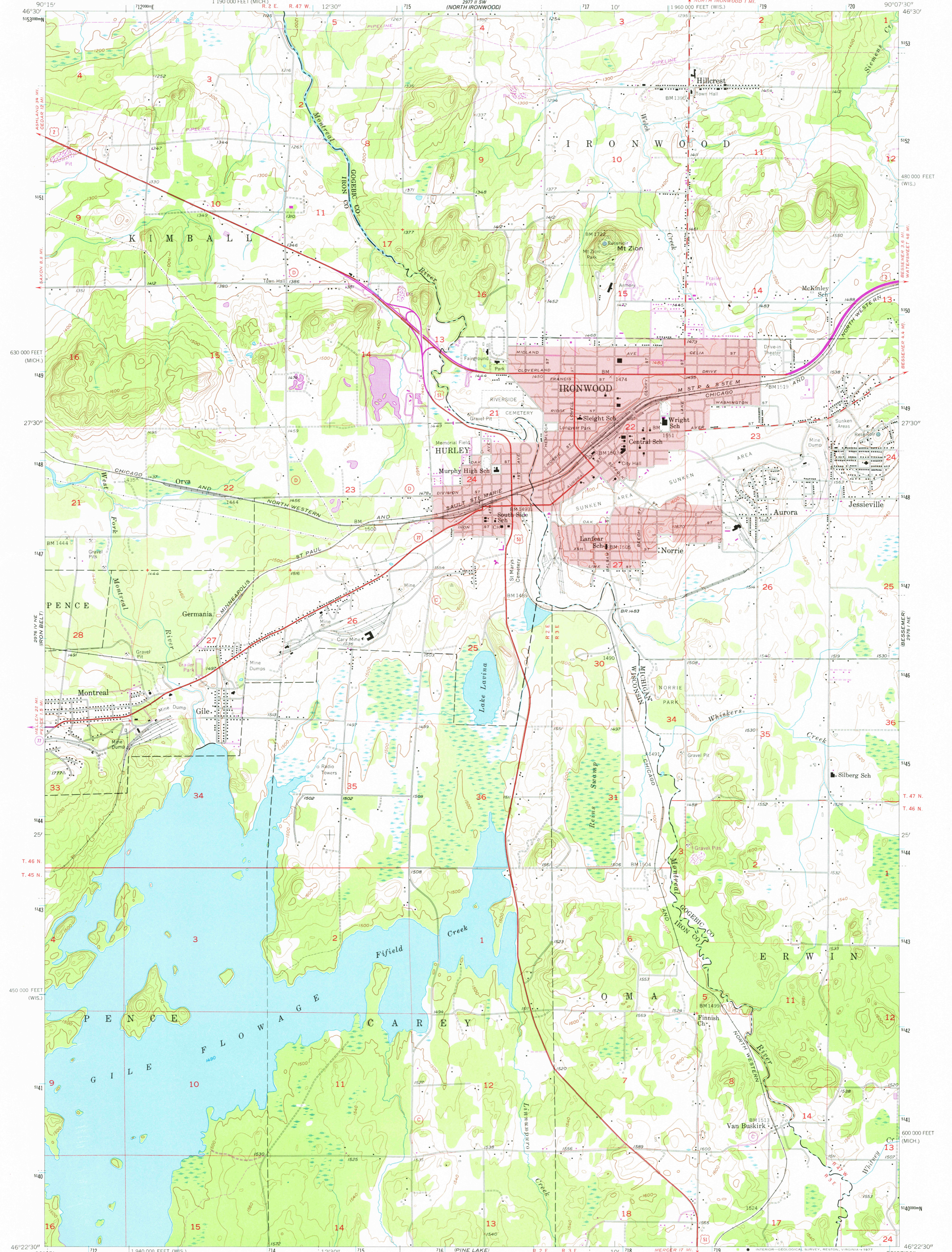
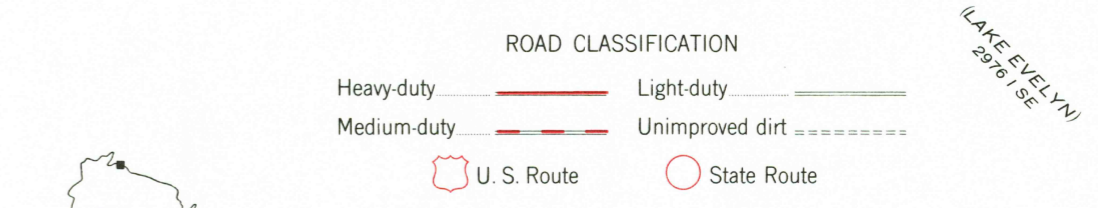
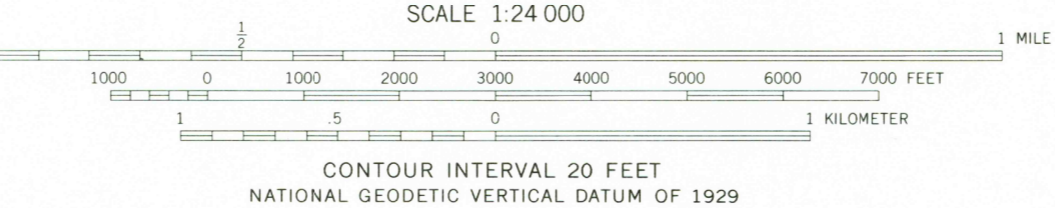
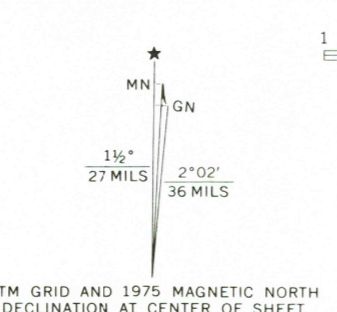


UNITED STATES  
DEPARTMENT OF THE INTERIOR  
GEOLOGICAL SURVEY

IRONWOOD QUADRANGLE  
MICHIGAN-WISCONSIN  
7.5 MINUTE SERIES (TOPOGRAPHIC)  
NW/4 IRONWOOD 15' QUADRANGLE



Mapped, edited, and published by the Geological Survey  
Control by USGS and USC&GS  
Topography from aerial photographs by Kelsh plotter  
Aerial photographs taken 1951. Field check 1955  
Polyconic projection. 1927 North American datum  
10,000-foot grids based on Wisconsin coordinate system,  
north zone, and Michigan coordinate system, north zone  
Red tint indicates areas in which only  
landmark buildings are shown  
1000-meter Universal Transverse Mercator grid ticks,  
zone 15, shown in blue  
Revisions shown in purple compiled from aerial photographs  
taken 1975. This information not field checked



THIS MAP COMPLIES WITH NATIONAL MAP ACCURACY STANDARDS  
FOR SALE BY U.S. GEOLOGICAL SURVEY, RESTON, VIRGINIA 22092  
AND WISCONSIN GEOLOGICAL AND NATURAL HISTORY SURVEY, MADISON, WISCONSIN 53706  
A FOLDER DESCRIBING TOPOGRAPHIC MAPS AND SYMBOLS IS AVAILABLE ON REQUEST

USGS  
Historical File  
Topographic Division

IRONWOOD, MICH.-WIS.  
NW/4 IRONWOOD 15' QUADRANGLE  
N4622.5-W9007.5  
1955  
PHOTOREVISED 1975  
AMS 2976 1 NW-SERIES V861

2800  
SEP 23 1977