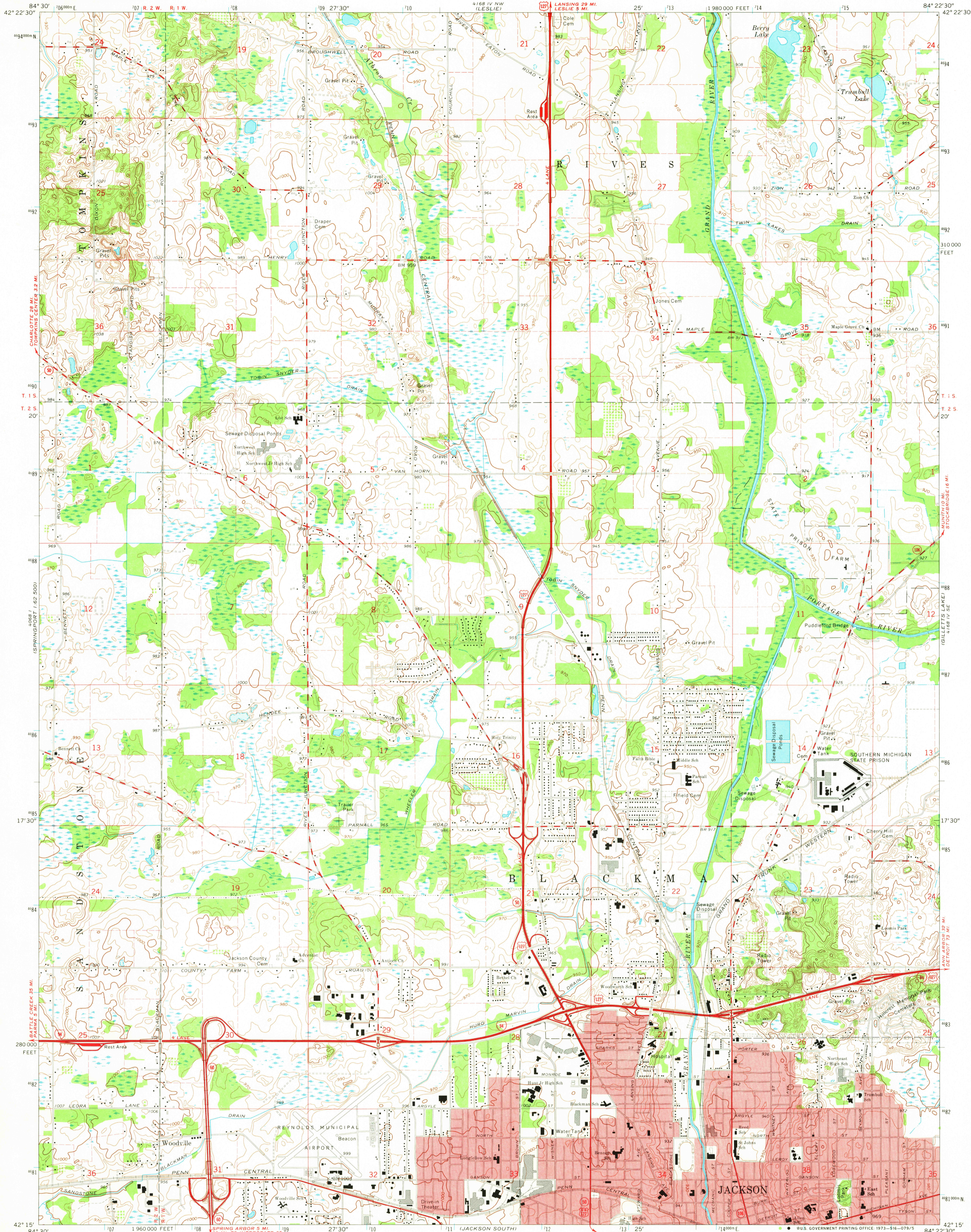
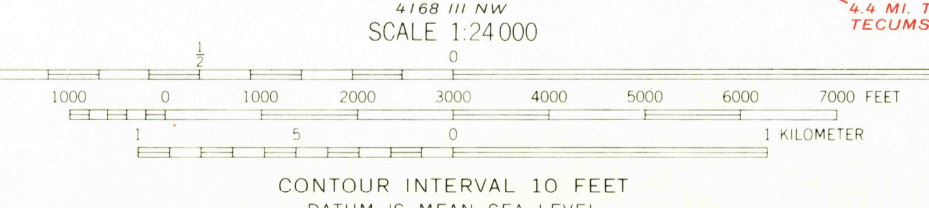


UNITED STATES
DEPARTMENT OF THE INTERIOR
GEOLOGICAL SURVEY

JACKSON NORTH QUADRANGLE
MICHIGAN—JACKSON CO.
7.5 MINUTE SERIES (TOPOGRAPHIC)



Mapped, edited, and published by the Geological Survey
Control by USGS and USC&GS
Topography by photogrammetric methods from aerial photographs taken 1970. Field checked 1970
Polyconic projection. 1927 North American datum 10,000-foot grid based on Michigan coordinate system, south zone 1000-meter Universal Transverse Mercator grid ticks, zone 16, shown in blue
Red tint indicates areas in which only landmark buildings are shown
Fine red dashed lines indicate selected fence and field lines where generally visible on aerial photographs. This information is unchecked



ROAD CLASSIFICATION
Primary highway, hard surface
Secondary highway, hard surface
Unimproved road
Light-duty road, hard or improved surface
Unimproved road
Interstate Route
U. S. Route
State Route

THIS MAP COMPLIES WITH NATIONAL MAP ACCURACY STANDARDS
FOR SALE BY U. S. GEOLOGICAL SURVEY, WASHINGTON, D. C. 20242
A FOLDER DESCRIBING TOPOGRAPHIC MAPS AND SYMBOLS IS AVAILABLE ON REQUEST

JACKSON NORTH, MICH.
SW/4 RIVES JUNCTION 15' QUADRANGLE
N4215—W8422 5/7.5

1970
AMS 4168 IV SW—SERIES V862

MAY 1 1973

SPRINGPORT 1:62,500

PLEASANT LAKE 1:62,500

SPRINGPORT 1:62,500

MICHIGAN CENTER 1:62,500

USGS
TOPOGRAPHIC DIVISION

How
3000