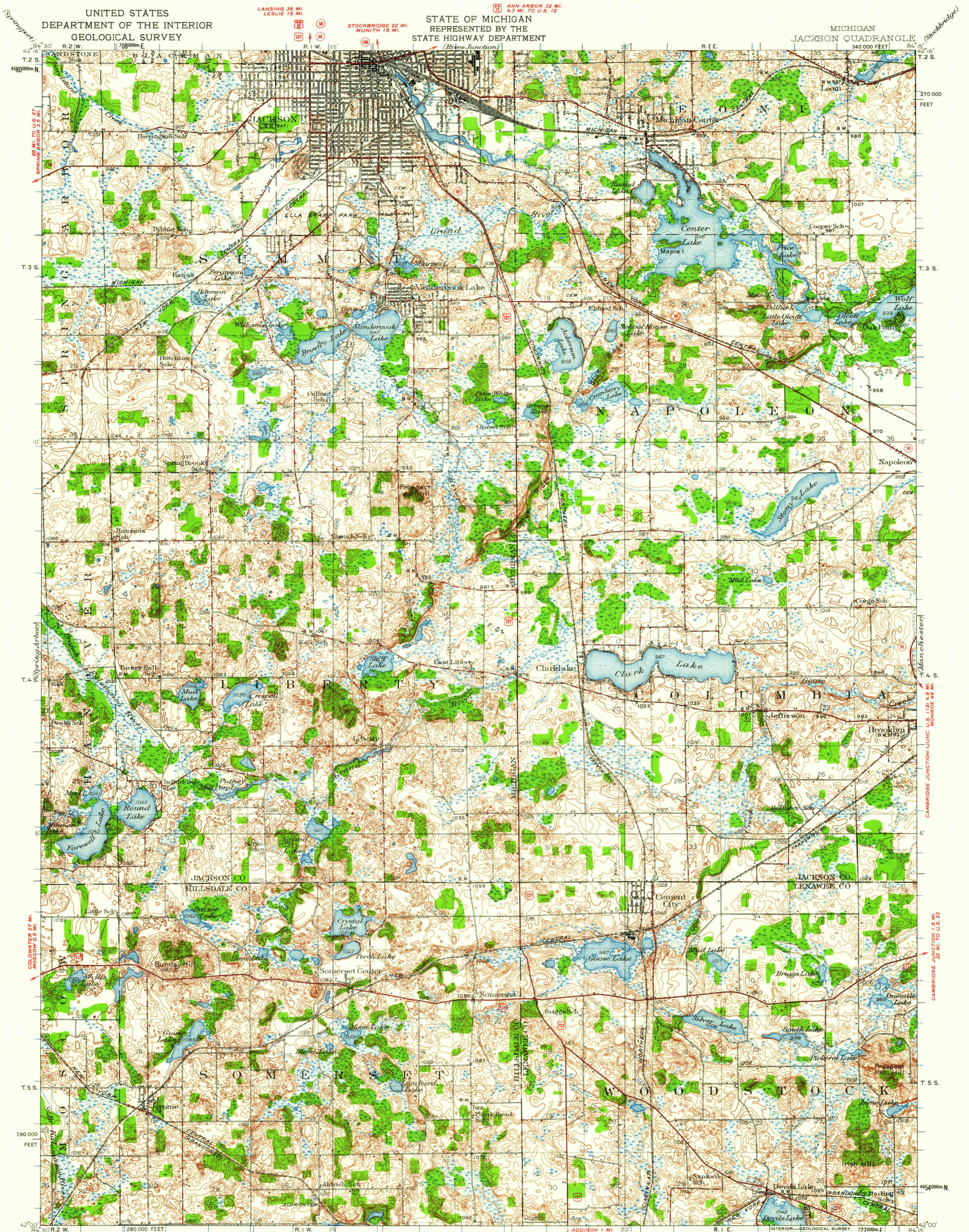


UNITED STATES
DEPARTMENT OF THE INTERIOR
GEOLOGICAL SURVEY

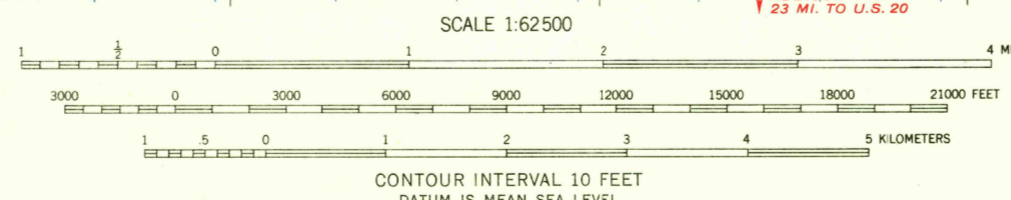
STATE OF MICHIGAN
REPRESENTED BY THE
STATE HIGHWAY DEPARTMENT

MICHIGAN
JACKSON QUADRANGLE



Topography by W.S. Gehres, F.L. Whaley, Kostka Mudd, A.W. Plushnick, E.J. Fennell, R.K. Kenerson, H.J. Owen, M.M. Stambaugh, LeGrand Smith, and R. Courtney. Surveyed in 1930 and 1935.

ROAD CLASSIFICATION
 Heavy-duty ——— Light-duty ———
 Medium-duty ——— Unimproved dirt ———
 U.S. Route State Route



USGS
 Historical File
 Topographic Division
 Polyconic projection. 1927 North American datum
 10,000-foot grid based on Michigan (East)
 rectangular coordinate system
 1000-meter Universal Transverse Mercator grid ticks,
 zone 16, shown in blue
 ROME CENTER 6 MI.
 TOLEDO (CIVIC CENTER) 50 MI.

U.S.G.S.
 FILE COPY
 TOPOGRAPHIC DIVISION
 JACKSON, MICH.
 N4200-W8415/15
 1935

FOR SALE BY U.S. GEOLOGICAL SURVEY, WASHINGTON 25, D. C.
 A FOLDER DESCRIBING TOPOGRAPHIC MAPS AND SYMBOLS IS AVAILABLE ON REQUEST

MAY 25 1960
 MAY 26 1960
 6250