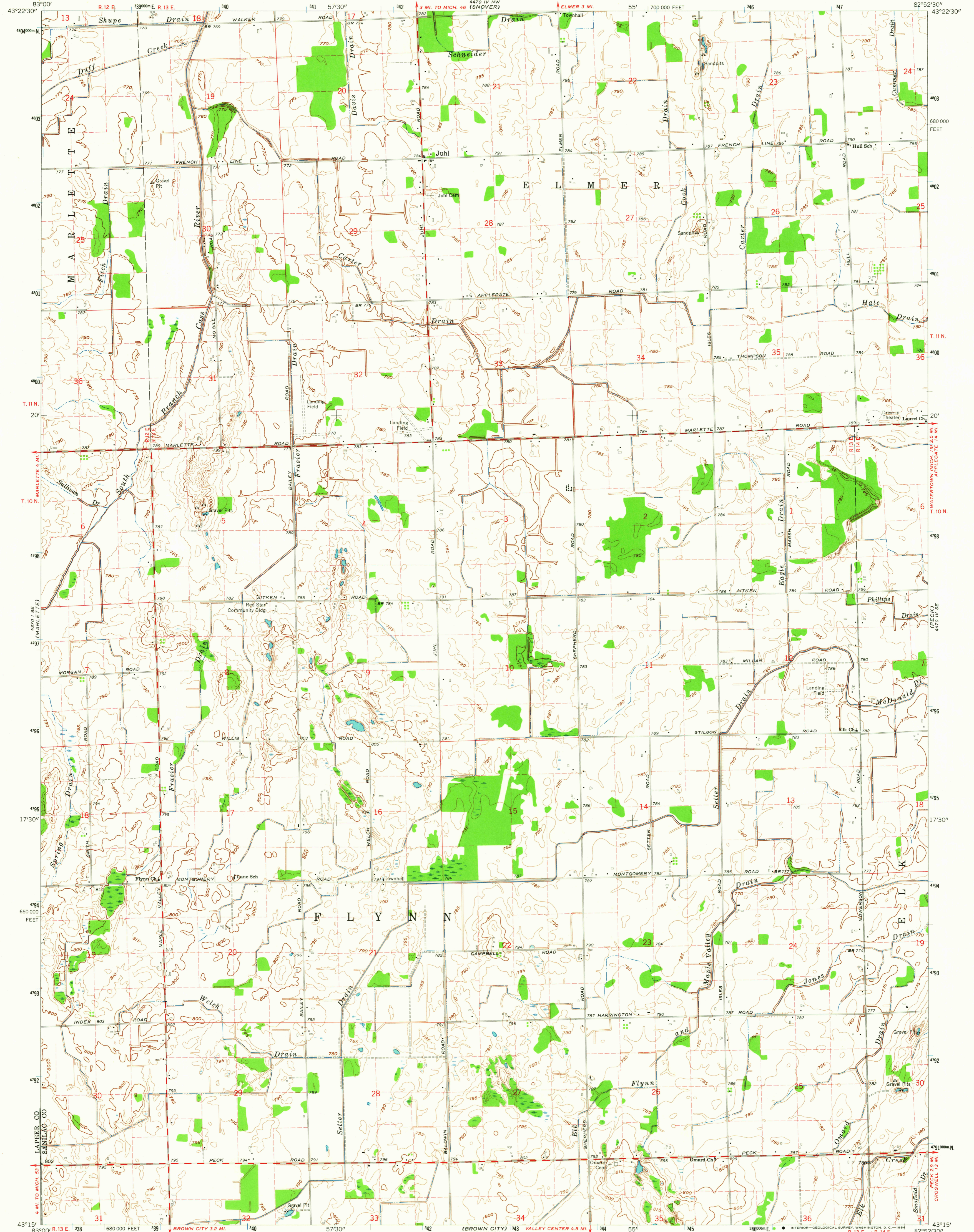


4470 IV SE
(SANDUSKY)

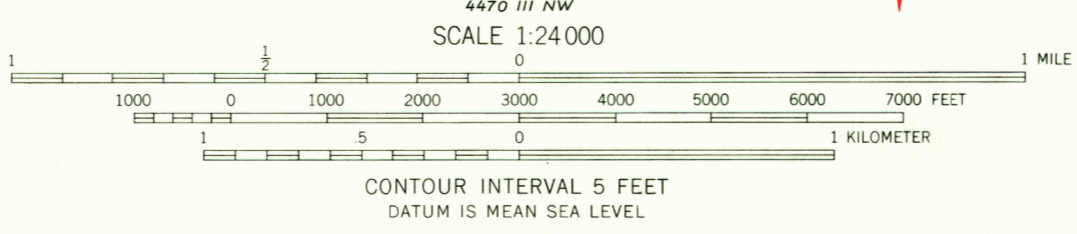
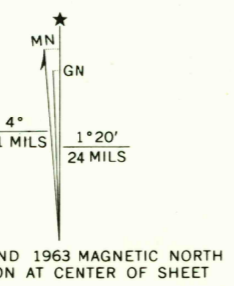
UNITED STATES
DEPARTMENT OF THE INTERIOR
GEOLOGICAL SURVEY

JUHL QUADRANGLE
MICHIGAN
7.5 MINUTE SERIES (TOPOGRAPHIC)

4470 IV NE
(SANDUSKY)



Mapped, edited, and published by the Geological Survey
Control by USGS and USC&GS
Topography by photogrammetric methods from aerial
photographs taken 1959 and planetable surveys 1963
Polyconic projection. 1927 North American datum
10,000-foot grid based on Michigan coordinate system, east zone
1000-meter Universal Transverse Mercator grid ticks,
zone 17, shown in blue
Fine red dashed lines indicate selected fence and field lines where
generally visible on aerial photographs. This information is unchecked



ROAD CLASSIFICATION
Medium-duty — Light-duty
Unimproved dirt —

USGS
Historical File
Topographic Division

JUHL, MICH.
N4315—W8252.5/7.5

1963

AMS 4470 IV SW—SERIES V862

THIS MAP COMPLIES WITH NATIONAL MAP ACCURACY STANDARDS
FOR SALE BY U. S. GEOLOGICAL SURVEY, WASHINGTON 25, D. C.
A FOLDER DESCRIBING TOPOGRAPHIC MAPS AND SYMBOLS IS AVAILABLE ON REQUEST

OCT 9 1964

2675

U.S.G.S.
FILE COPY
TOPOGRAPHIC DIVISION