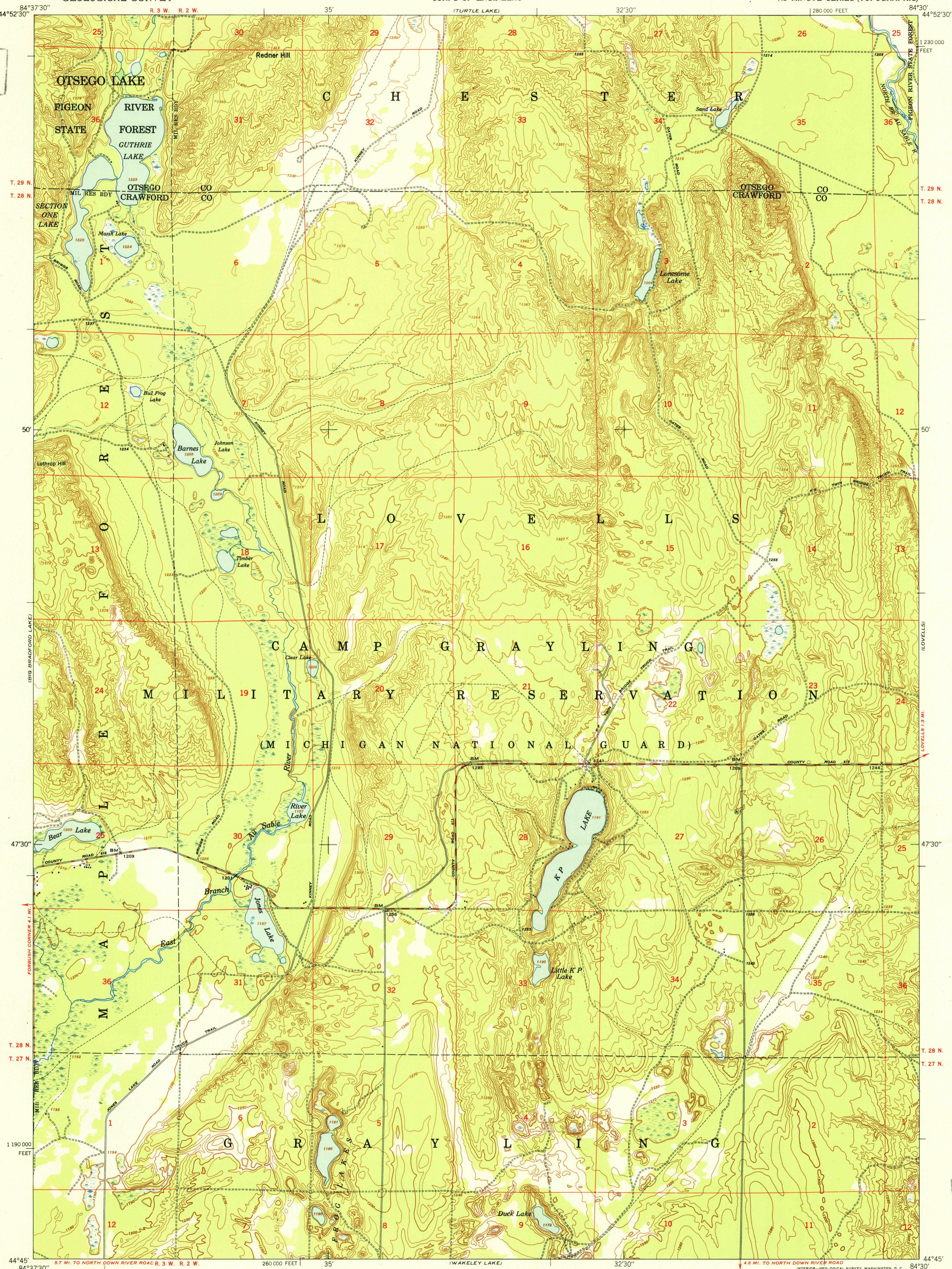
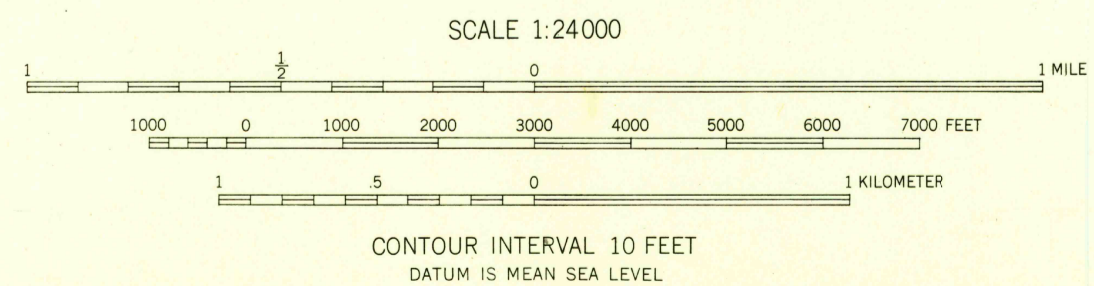


U. S. G. S.
FILE COPY
Imprinting and Binding.

U. S. G. S.
FILE COPY
Imprinting and Binding.



Mapped by the Army Map Service
Published for civil use by the Geological Survey
Control by US&GS, USGS, and CE
Topography from aerial photographs by multiplex methods
Aerial photographs taken 1949. Field check 1950
Polyconic projection. 1927 North American datum
10,000-foot grid based on Michigan coordinate system,
east zone
Unchecked elevations are shown in brown



USGS
Historical Files
Topographic Division

ROAD CLASSIFICATION
HARD-SURFACE ALL WEATHER ROADS DRY WEATHER ROADS
Heavy-duty 4 LANE IS LANE Improved dirt
Medium-duty 4 LANE IS LANE Unimproved dirt
Loose-surface, graded, or narrow hard-surface
U. S. Route State Route

K P LAKE, MICH.
N4445-W8430/7.5
EDITION OF 1951

THIS MAP COMPLIES WITH NATIONAL MAP ACCURACY STANDARDS
FOR SALE BY U. S. GEOLOGICAL SURVEY, WASHINGTON 25, D. C.
A FOLDER DESCRIBING TOPOGRAPHIC MAPS AND SYMBOLS IS AVAILABLE ON REQUEST