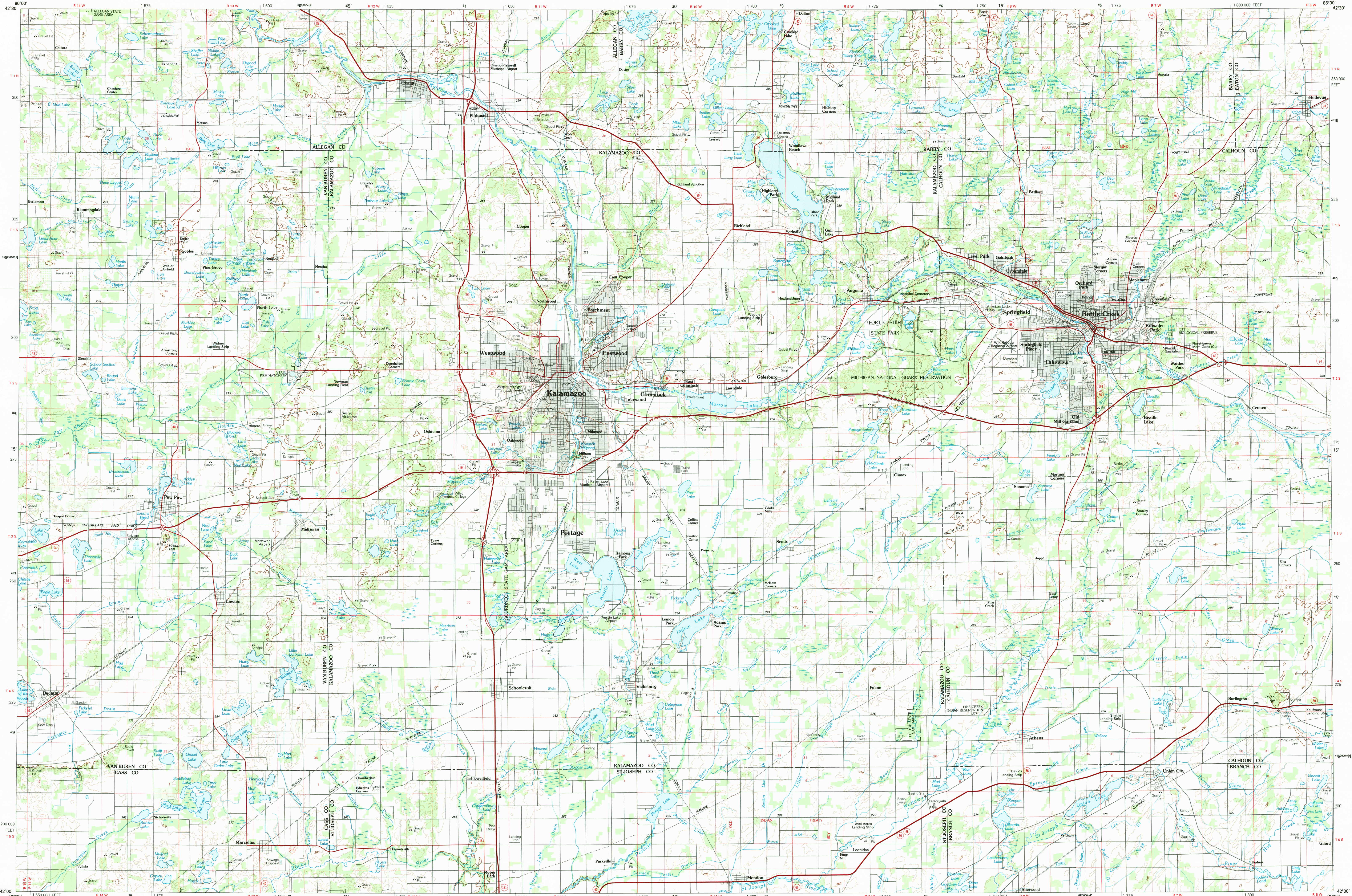


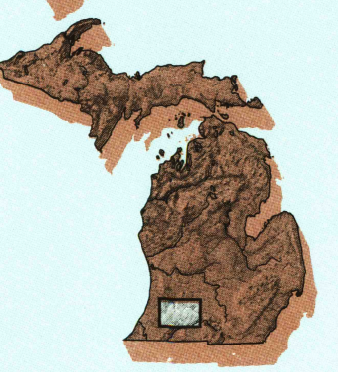
KALAMAZOO, MICHIGAN

30 X 60 MINUTE SERIES (TOPOGRAPHIC)



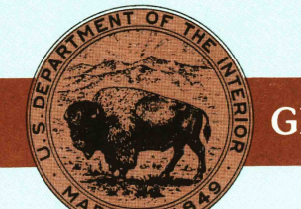
Kalamazoo MICHIGAN

1:100 000-scale metric topographic map



30 X 60 MINUTE QUADRANGLE SHOWING

- Contours and elevations in meters
- Highways, roads and other manmade structures
- Water features
- Woodland areas
- Geographic names



GEOLOGICAL SURVEY

1982

Produced by the United States Geological Survey  
 Compiled from USGS 1:24 000-scale topographic maps dated 1947-1982. Planimetry revised from aerial photographs taken 1979-80 and other source data. Revised information not field checked. Map edited 1982.  
 Projection and 10 000-meter grid, zone 16, Universal Transverse Mercator.  
 25 000-foot grid ticks based on Michigan coordinate system, south zone 1927 North American Datum.  
 To place on the predicted North American Datum 1983 move the projection lines 1 meter north.  
 There may be private inholdings within the boundaries of the National or State reservations shown on this map.

CONTOUR INTERVAL 10 METERS  
 NATIONAL GEODETIC VERTICAL DATUM OF 1929  
 ELEVATIONS SHOWN TO THE NEAREST METER

THIS MAP COMPLES WITH NATIONAL MAP ACCURACY STANDARDS

CONVERSION TABLE		DECLINATION DIAGRAM		ADJOINING MAPS		
Meters	Feet	MAGNETIC		1	2	3
1	3.2808	↓		4	5	
2	6.5617			6	7	8
3	9.8425	↑				
4	13.1234	N				
5	16.4042	34° 30' W				
6	19.6851	180°				
7	22.9659	11° 15' E				
8	26.2468	0°				
9	29.5276	11° 15' W				
10	32.8085	34° 30' E				

To convert meters to feet multiply by 3.2808  
 To convert feet to meters multiply by 0.3048

UTM grid convergence (EN) and 1983 magnetic declination (MW) at center of map  
 Diagram is approximate

FOR SALE BY U. S. GEOLOGICAL SURVEY RESTON, VIRGINIA 22092

Topographic Map Symbols

- Primary highway, hard surface
- Secondary highway, hard surface
- Light duty road, principal street, hard or improved surface
- Other road or street, trail
- Route marker: Interstate, U.S. State
- Railroad: standard gage, narrow gage
- Bridge, overpass, underpass
- Tunnel: road, railroad
- Build up area, locality, elevation
- Airport: landing field, landing strip
- National boundary
- State boundary
- County boundary
- National or State reservation boundary
- Land grant boundary
- U.S. public lands survey: range, township, section
- Range, township, section line, protected
- Power transmission line, pipeline
- Dam, dam with lock
- Cemetery, building
- Windmill, water well, spring
- Mine shaft, adit or cave, mine, quarry, gravel pit
- Campground, picnic area, U.S. location monument
- Ruin, old building, mark, masonry
- Disturbed surface: strip mine, leve, sand
- Contours: index, intermediate, supplementary
- Bathymetric contours: index, intermediate
- Stream, lake: perennial, intermittent
- Rapids, large and small; falls, large and small
- Area to be submerged, mark, swampy
- Land subject to controlled inundation; woodland
- Scrub; mangrove
- Orchard; vineyard

A pamphlet describing topographic maps is available on request

SCALE 1:100 000  
 1 CENTIMETER ON THE MAP REPRESENTS 1 KILOMETER ON THE GROUND  
 CONTOUR INTERVAL 10 METERS

KALAMAZOO, MICHIGAN  
 42085-A1-TM-100

1982

RETURN TO: USGS AND HISTORICAL MAP ARCHIVES