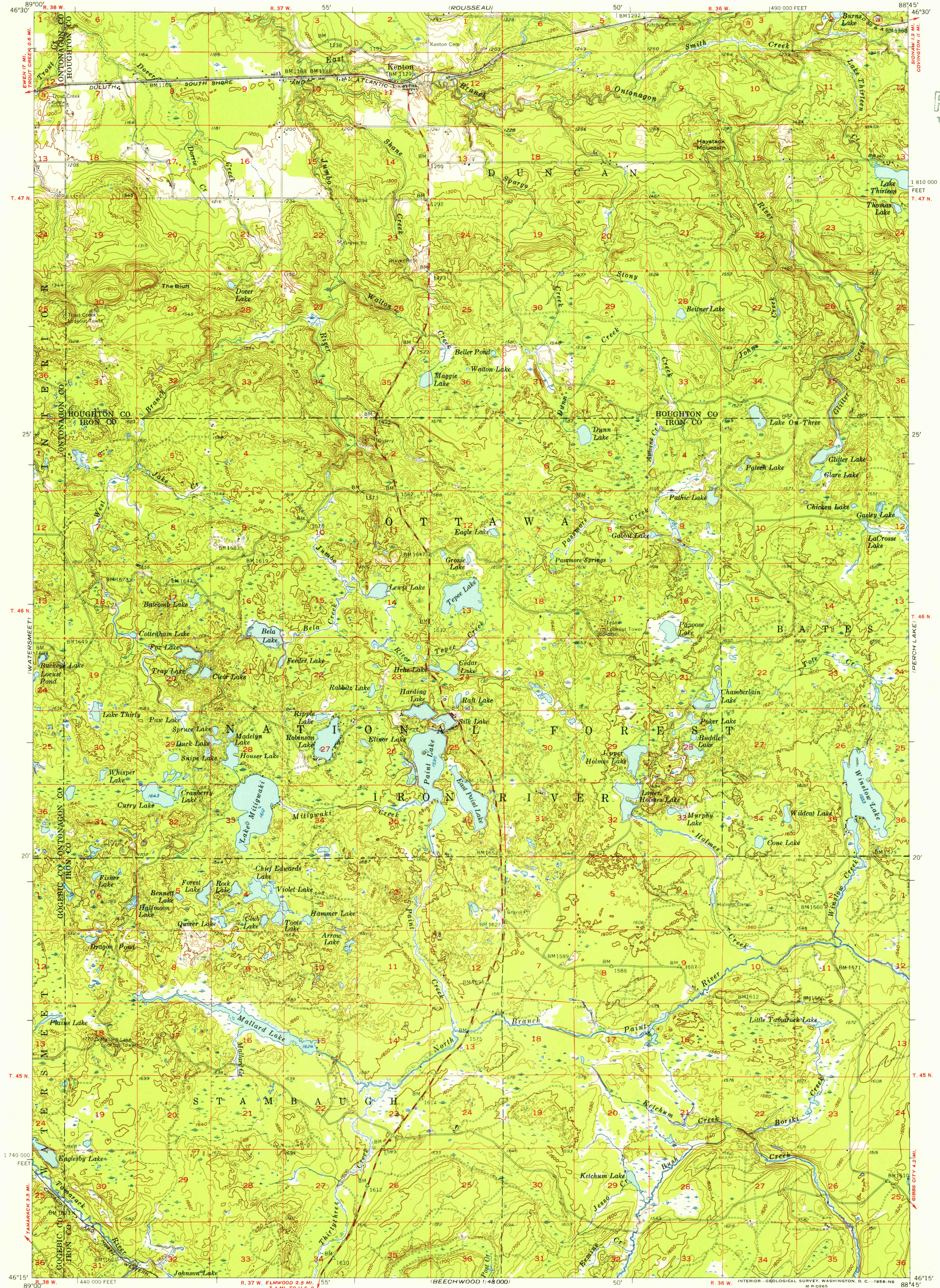


U.S.G.S.  
FILE COPY  
TOPOGRAPHIC DIVISION



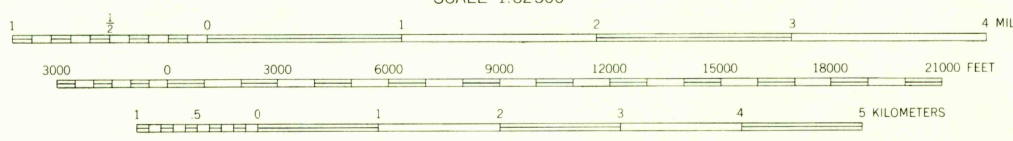
1 810 000  
FEET  
T. 47 N.

T. 46 N.

T. 45 N.

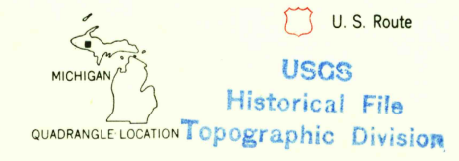
46°15'  
89°00'

Mapped, edited, and published by the Geological Survey  
Control by USGS and USC&GS  
Topography from aerial photographs by photogrammetric methods  
Aerial photographs taken 1951 and 1953. Field check 1953-1954  
Polyconic projection, 1927 North American datum  
10,000-foot grid based on Michigan coordinate system,  
west zone



CONTOUR INTERVAL 20 FEET  
DATUM IS MEAN SEA LEVEL

ROAD CLASSIFICATION  
Heavy-duty ——— Light-duty ———  
Medium-duty ——— Unimproved dirt - - - - -  
U. S. Route ○ State Route ○



KENTON, MICH.  
N4615-W8845/15

1954

THIS MAP COMPLIES WITH NATIONAL MAP ACCURACY STANDARDS  
FOR SALE BY U. S. GEOLOGICAL SURVEY, WASHINGTON 25, D. C.  
A FOLDER DESCRIBING TOPOGRAPHIC MAPS AND SYMBOLS IS AVAILABLE ON REQUEST

FEB 9 1956

2530