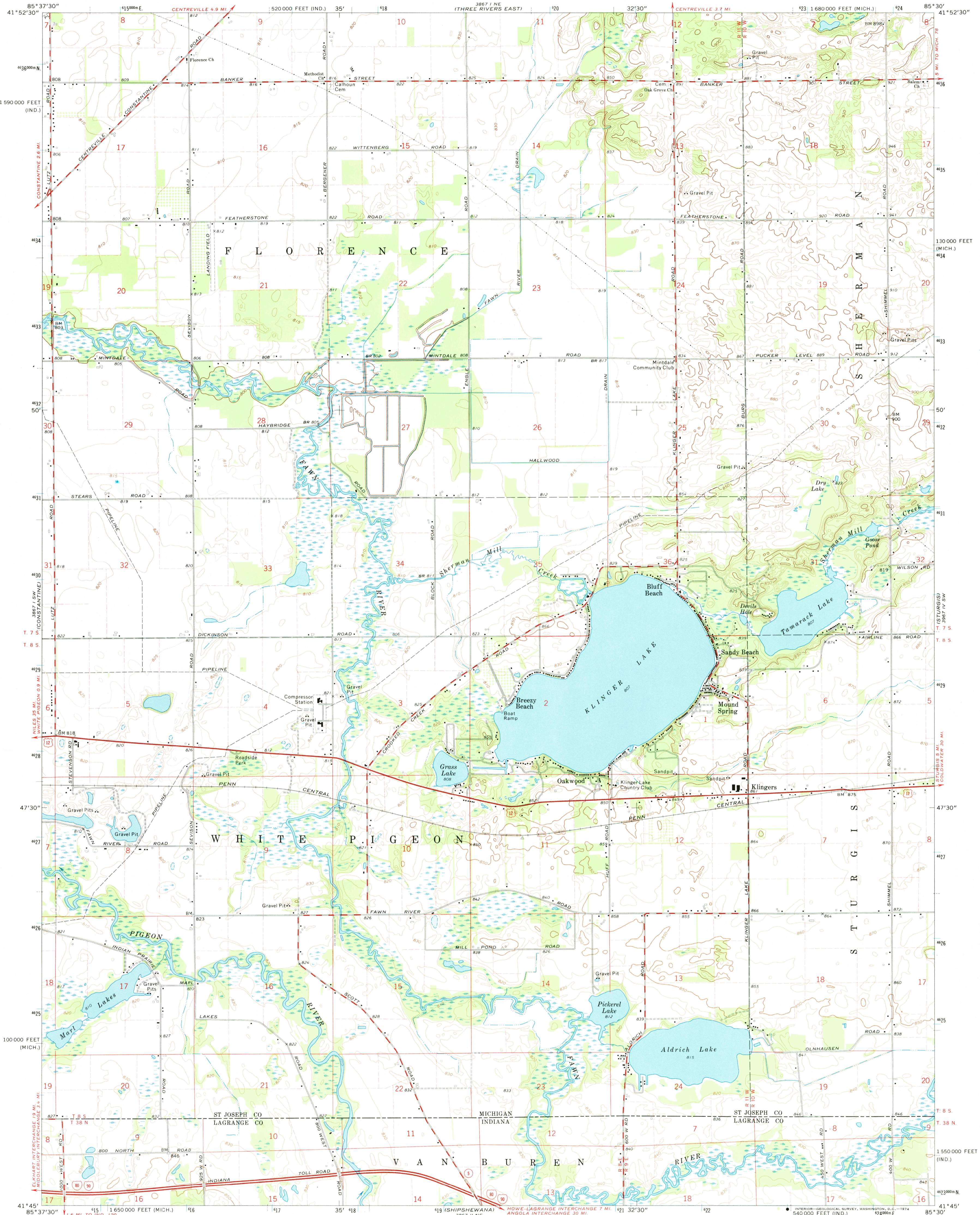


UNITED STATES
DEPARTMENT OF THE INTERIOR
GEOLOGICAL SURVEY

KLINGER LAKE QUADRANGLE
MICHIGAN-INDIANA
7.5 MINUTE SERIES (TOPOGRAPHIC)
SE/4 THREE RIVERS 15' QUADRANGLE



Mapped, edited, and published by the Geological Survey

Control by USGS and USC&GS

Topography by photogrammetric methods from aerial photographs taken 1969. Field checked 1972

Polyconic projection. 1927 North American datum 10,000-foot grids based on Michigan coordinate system, south zone and Indiana coordinate system, east zone 1000-meter Universal Transverse Mercator grid ticks, zone 16, shown in blue

Fine red dashed lines indicate selected fence and field lines where generally visible on aerial photographs. This information is unchecked

UTM GRID AND 1972 MAGNETIC NORTH DECLINATION AT CENTER OF SHEET



CONTOUR INTERVAL 10 FEET
DOTTED LINES REPRESENT 5-FOOT CONTOURS
DATUM IS MEAN SEA LEVEL

THIS MAP COMPLIES WITH NATIONAL MAP ACCURACY STANDARDS
FOR SALE BY U. S. GEOLOGICAL SURVEY, WASHINGTON, D. C. 20242
AND INDIANA DEPARTMENT OF NATURAL RESOURCES, INDIANAPOLIS, INDIANA 46204
A FOLDER DESCRIBING TOPOGRAPHIC MAPS AND SYMBOLS IS AVAILABLE ON REQUEST



QUADRANGLE LOCATION

USGS
Historical File
Topographic Division

- ROAD CLASSIFICATION
- Primary highway, hard surface
 - Secondary highway, hard surface
 - Light duty road, hard or improved surface
 - Unimproved road
 - Interstate Route
 - U. S. Route
 - State Route

KLINGER LAKE, MICH.-IND.
SE/4 THREE RIVERS 15' QUADRANGLE
N4145-W8530/7.5

1972

AMS 3867 1 SE-SERIES V862

JUN 21 1974

3490