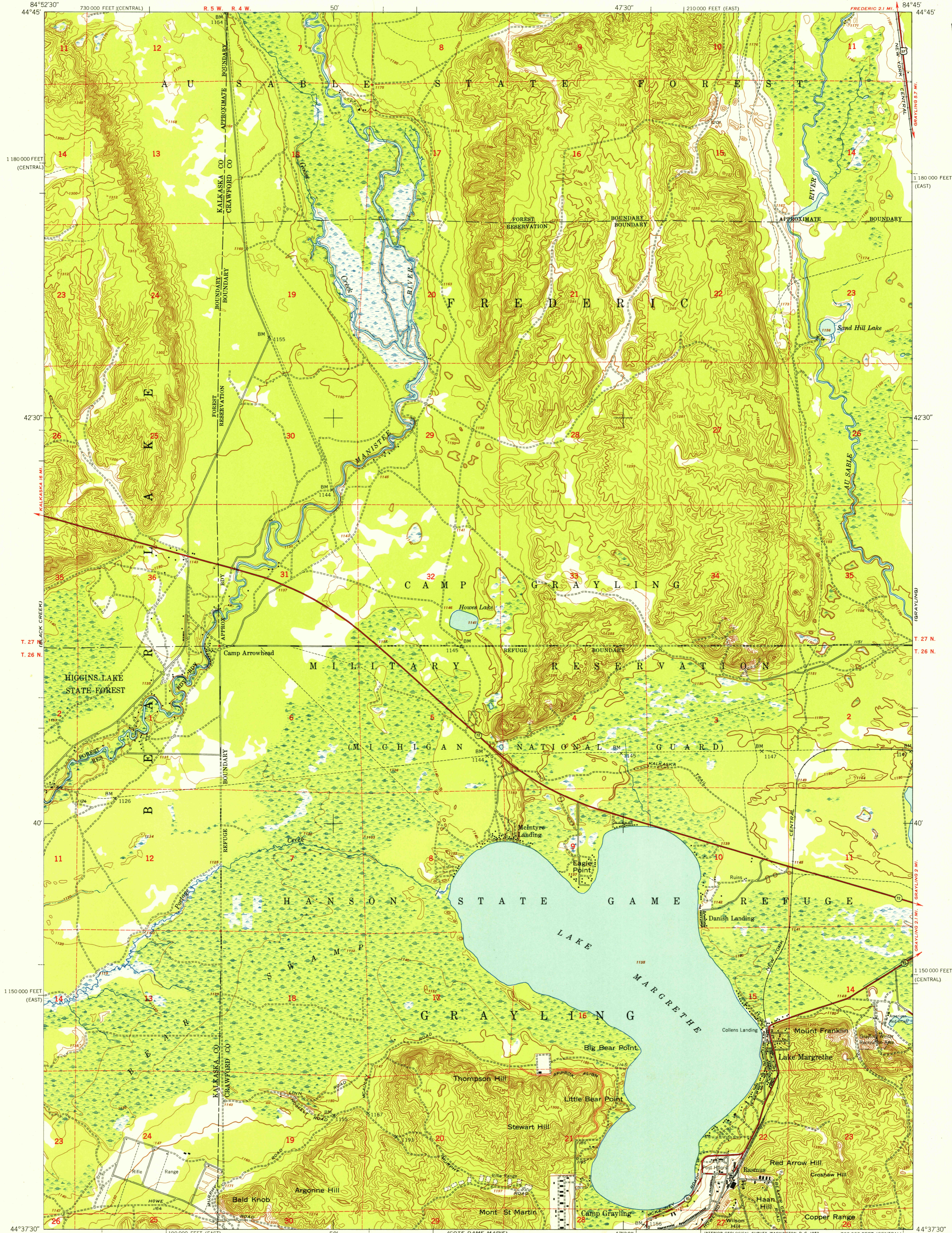
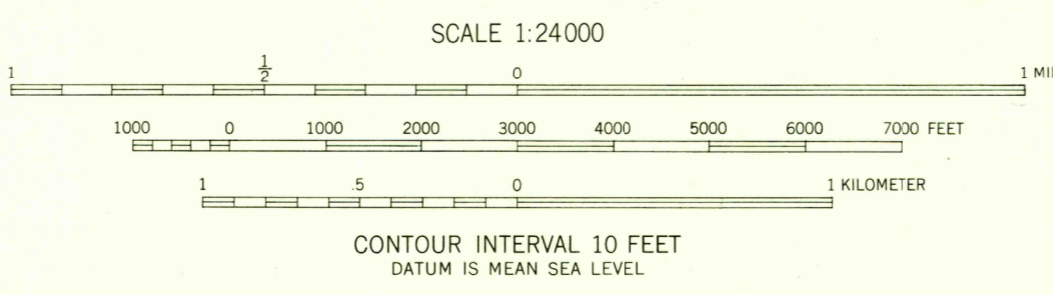


U.S.G.S.
FILE COPY
Inspection and Editing



Mapped by the Army Map Service
Published for civil use by the Geological Survey
Control by USC&GS, USGS, and USCE
Topography from aerial photographs by multiplex methods
Aerial photographs taken 1949. Field check 1950
Polyconic projection. 1927 North American datum
10,000-foot grids based on Michigan coordinate system,
central and east zones
Unchecked elevations are shown in brown
Dashed land lines indicate approximate locations

TRUE NORTH
MAGNETIC NORTH
APPROXIMATE MEAN
DECLINATION, 1950



USGS
Historical File
Topographic Division

ROAD CLASSIFICATION

Heavy-duty	4 LANE 16 LANE	Light-duty
Medium-duty	4 LANE 16 LANE	Unimproved dirt

U.S. Route State Route



LAKE MARGRETHE, MICH.
N4437.5-W8445/7.5

U.S.G.S.
FILE COPY
Inspection and Editing

THIS MAP COMPLIES WITH NATIONAL MAP ACCURACY STANDARDS
FOR SALE BY U.S. GEOLOGICAL SURVEY, WASHINGTON 25, D. C.
A FOLDER DESCRIBING TOPOGRAPHIC MAPS AND SYMBOLS IS AVAILABLE ON REQUEST

1950

MAY 13 1953

3130