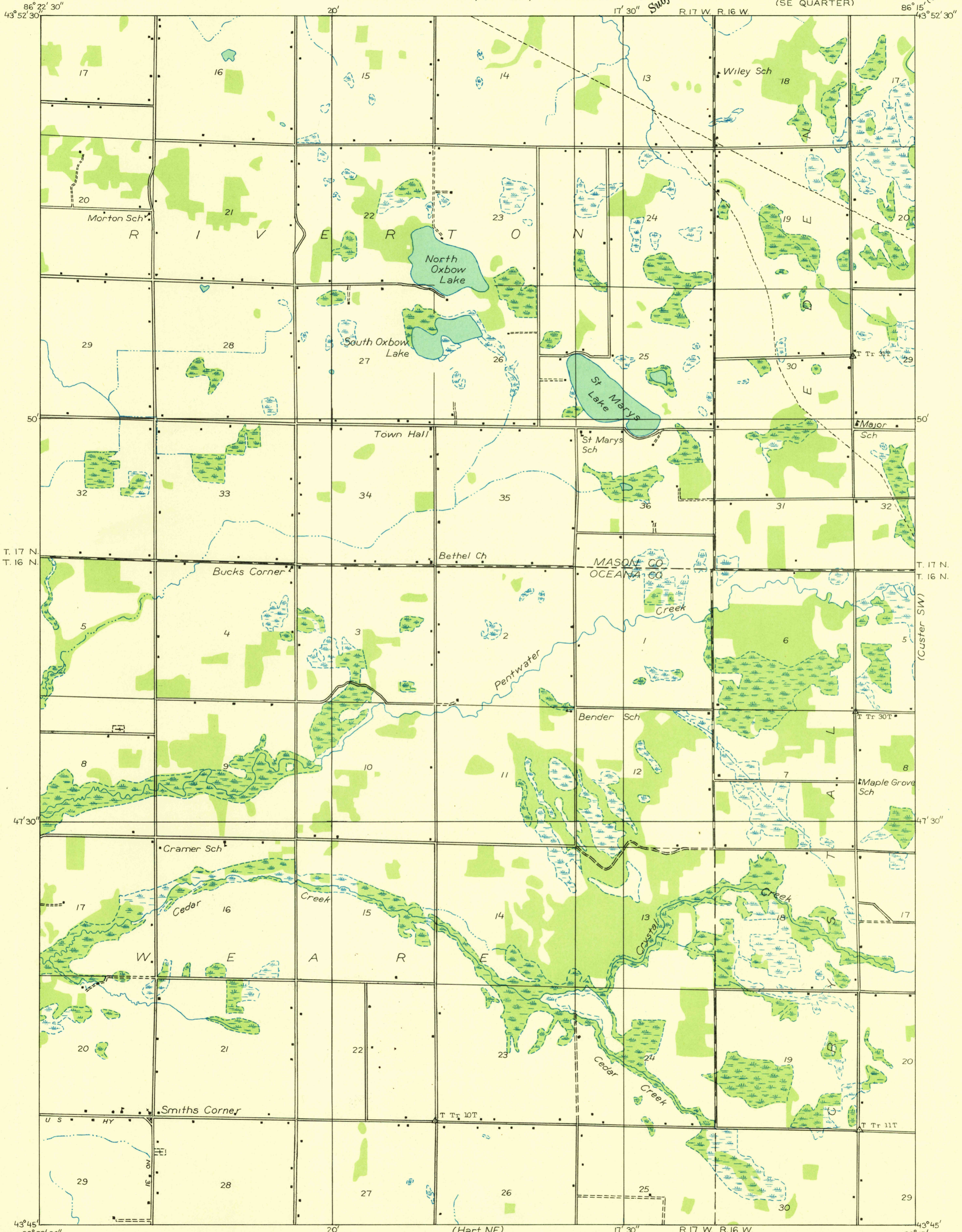


Advance sheet
Subject to correction

U. S. G. S.
FILE COPY
Inspection and Editing.

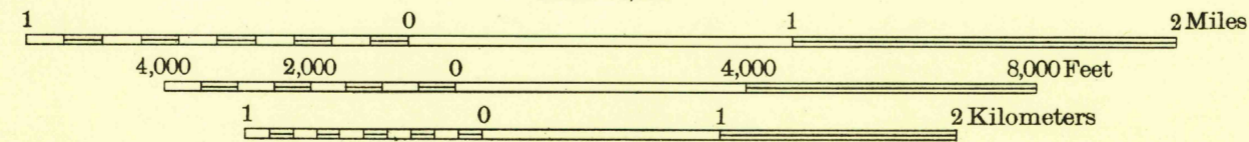


Glenn S. Smith, Division Engineer
Compiled by U. S. Geological Survey after field examination
of aerial photographs taken by Air Corps, U. S. Army
Control by U. S. Geological Survey
Field examination in 1932

TRUE NORTH
MAGNETIC NORTH
0°

APPROXIMATE MEAN
DECLINATION, 1982

Scale 1:31,680



Polyconic projection. North American datum

USGS
Historical File
Topographic Division

LUDINGTON, MICH.
(SE)