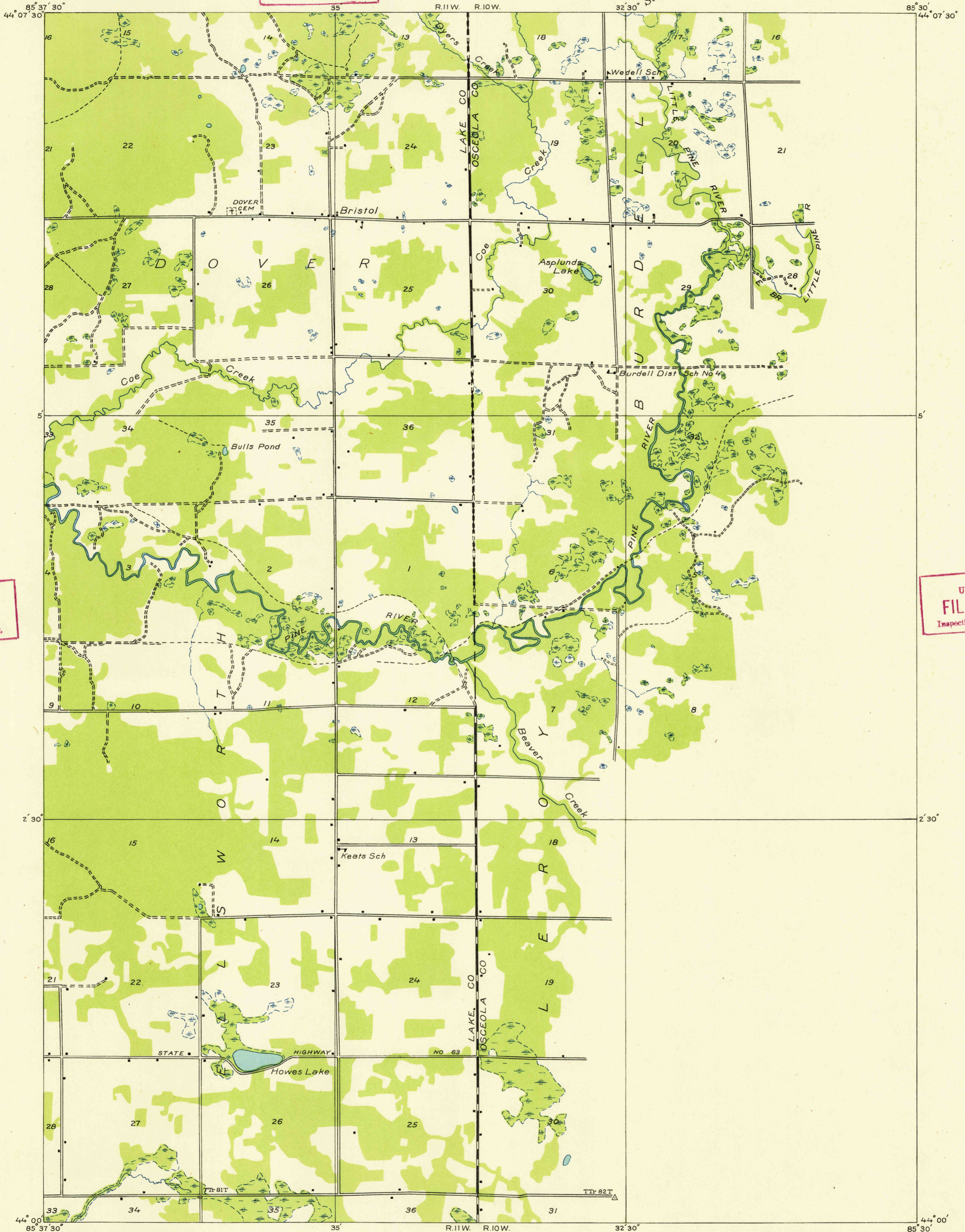


U. S. G. S.
FILE COPY
Inspection and Editing.

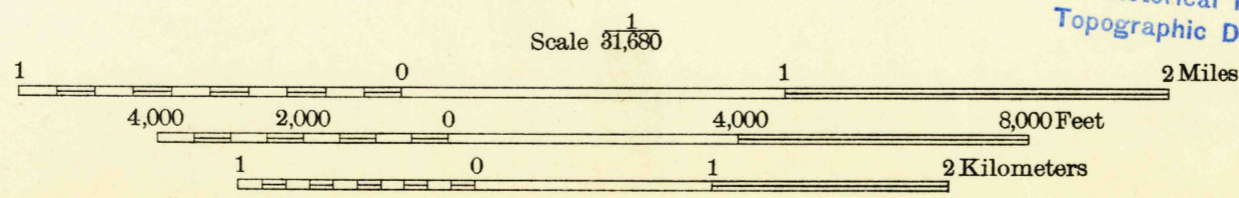
Advance sheet
Subject to correction



U. S. G. S.
FILE COPY
Inspection and Editing.

U. S. G. S.
FILE COPY
Inspection and Editing.

Glenn S. Smith, Division Engineer
Compiled by U. S. Geological Survey after field examination
of aerial photographs taken by Air Corps, U. S. Army
Control by U. S. Geological Survey
Field examination in 1931 and 1933



USGS
Historical File
Topographic Division

Polyconic projection. North American datum

TRUE NORTH
MAGNETIC NORTH
APPROXIMATE MEAN
DECLINATION, 1933

U. S. G. S.
FILE COPY
Inspection and Editing.

LUTHER, MICH.
(SE.)

APR 12 1948