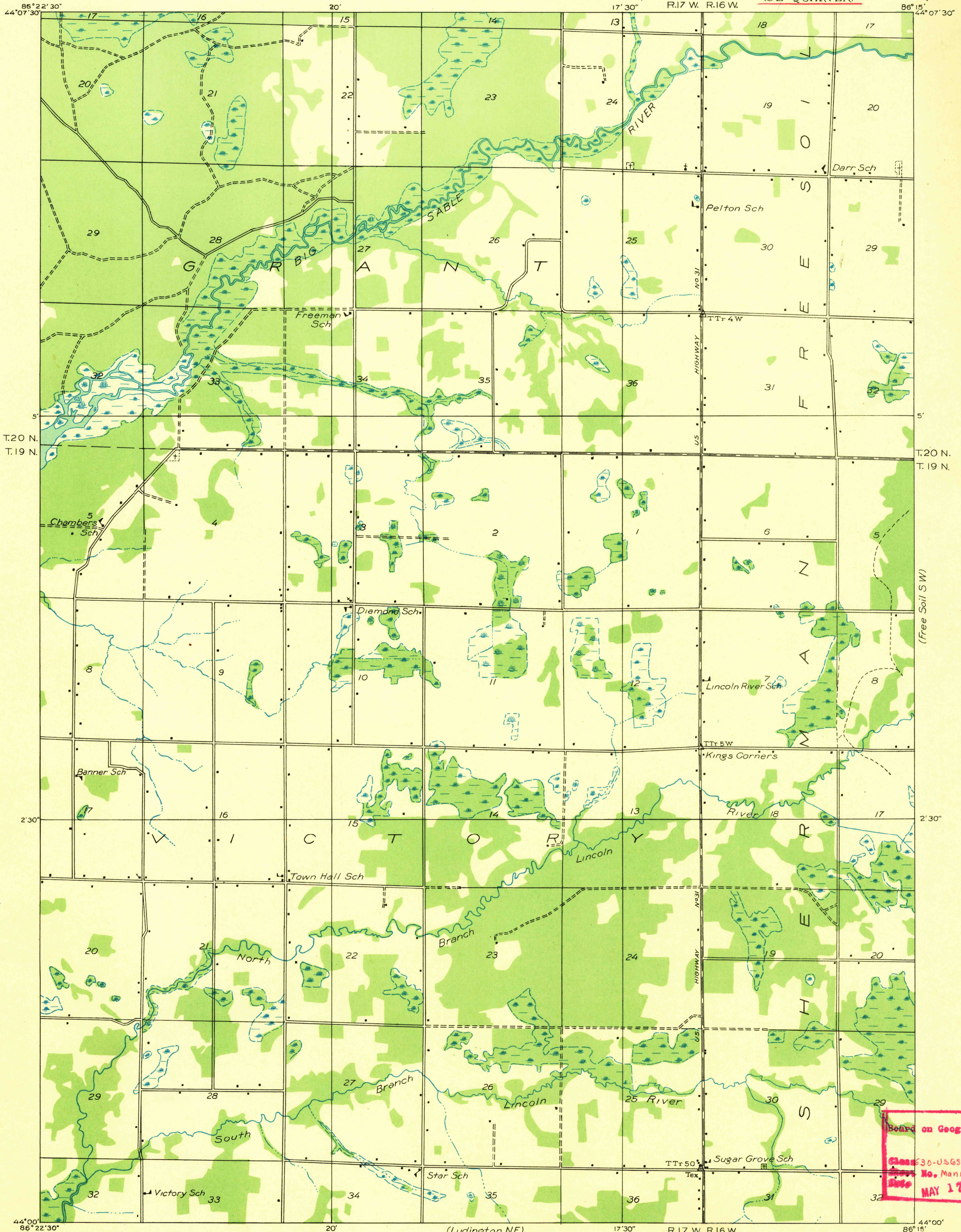
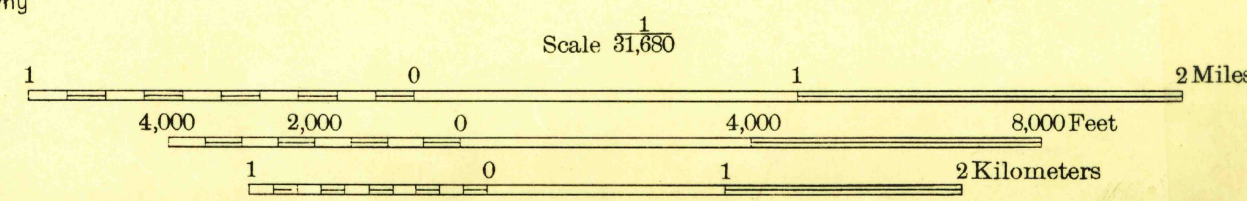


Advance sheet.
Subject to correction.

M-3
(Free Soil NW)



Glenn S. Smith, Division Engineer
Compiled by U. S. Geological Survey after field examination
of aerial photographs taken by Air Corps, U. S. Army
Control by U. S. Geological Survey
Field examination in 1931



Polyconic projection. North American datum
TRUE NORTH
MAGNETIC NORTH
APPROXIMATE MEAN DECLINATION, 1931
MANISTEE, MICH. (SE)

(Ludington NW)

(Ludington NE)

(Custer NW)

7.5'