

DEPARTMENT OF THE INTERIOR
U. S. GEOLOGICAL SURVEY

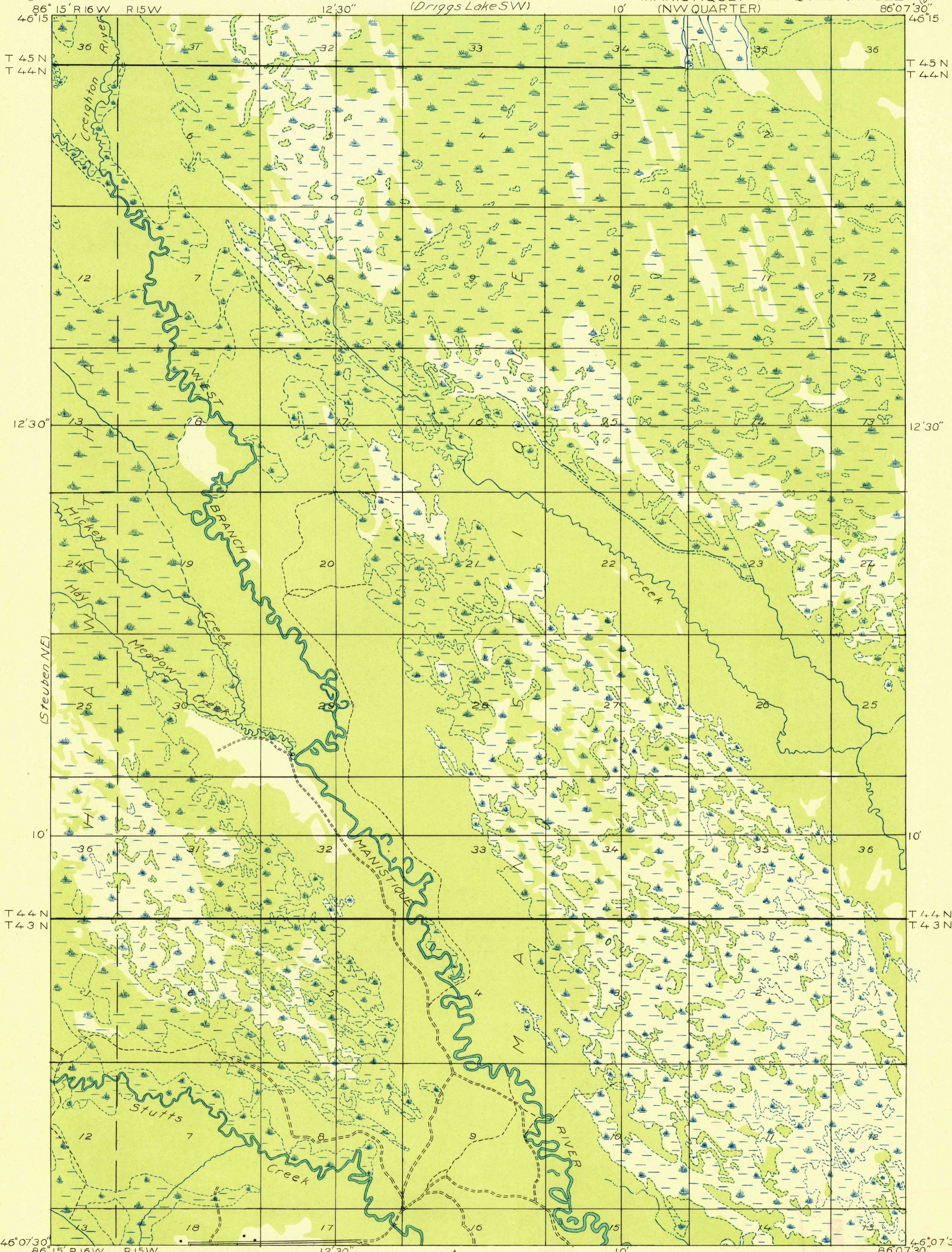
STATE OF MICHIGAN
DEPARTMENT OF CONSERVATION
GEO. R. HOGARTH, DIRECTOR
GEOLOGICAL SURVEY DIVISION, R. A. SMITH, STATE GEOLOGIST

MICHIGAN
(SCHOOLCRAFT COUNTY)
MANISTIQUE RIVER QUADRANGLE
(NW QUARTER)

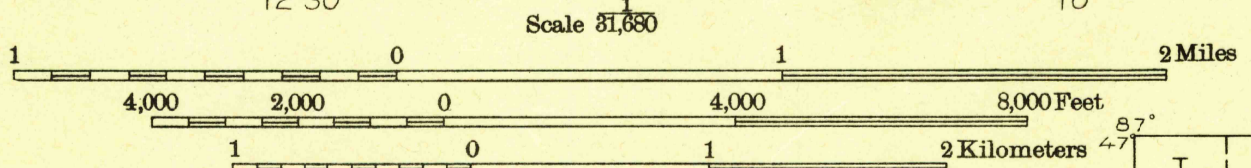
Advance sheet
Subject to correction

(Shingleton SE)

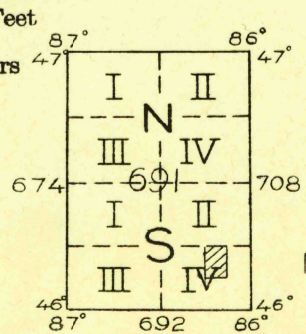
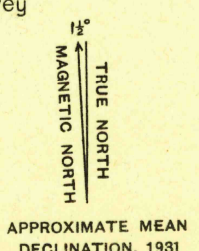
(Driggs Lake SE)



Glenn S. Smith, Division Engineer
Compiled in part from aerial photographs
taken by Air Corps, U. S. Army
Control by U. S. Geological Survey
Surveyed in 1931



Polyconic projection. North American datum



U. S. Board on
Geographical Names

MANISTIQUE RIVER, MICH.
(NW QUARTER)

(Steuben SE)

7.5'