

DEPARTMENT OF THE INTERIOR  
U. S. GEOLOGICAL SURVEY

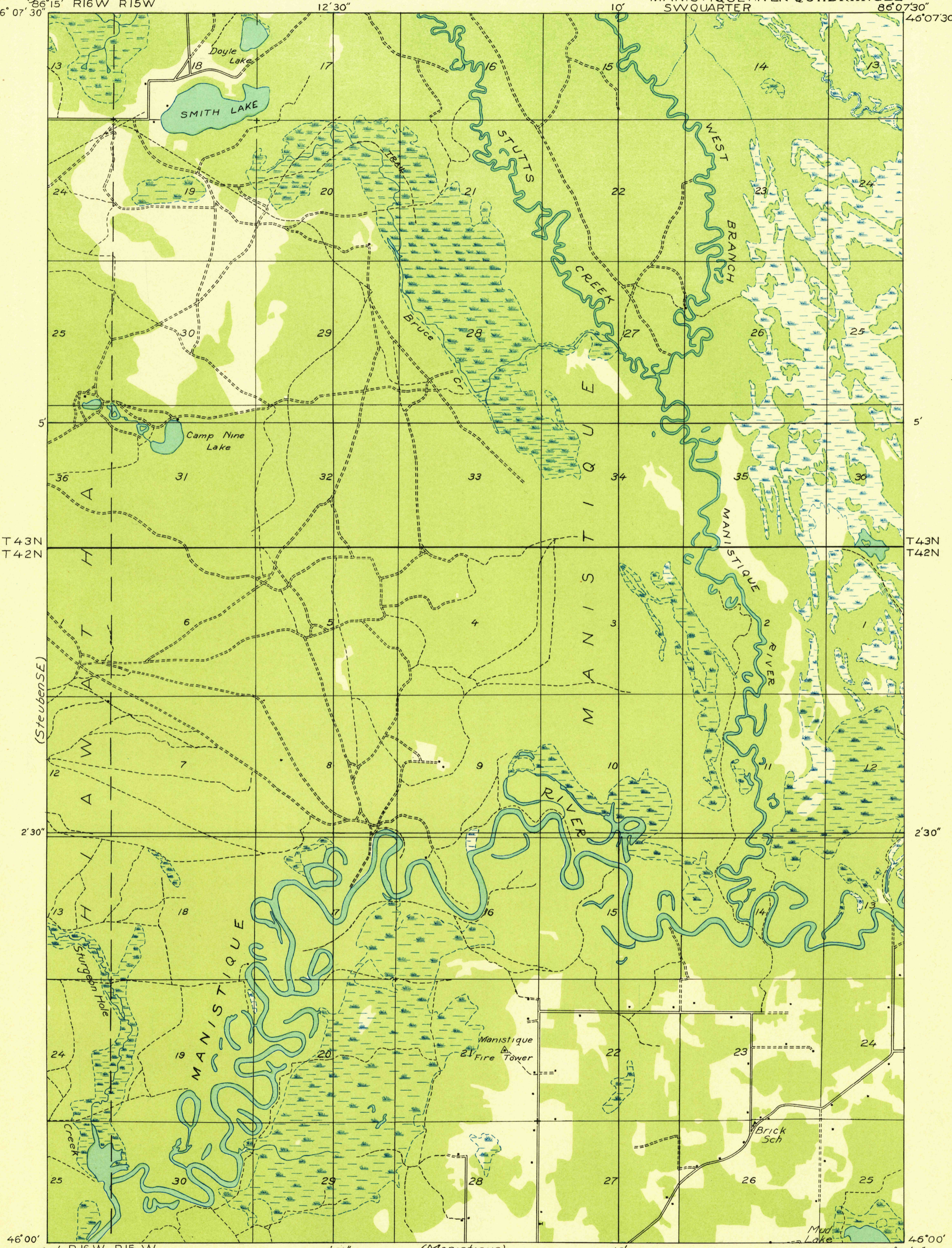
STATE OF MICHIGAN  
DEPARTMENT OF CONSERVATION  
GEO. R. HOGARTH, DIRECTOR  
GEOLOGICAL SURVEY DIVISION, R. A. SMITH, STATE GEOLOGIST

Advance sheet  
Subject to correction

MICHIGAN (SCHOOLCRAFT COUNTY)  
MANISTIQUE RIVER QUADRANGLE  
SW QUARTER

(Steuben NE)  
86° 15' R16W R15W  
46° 07' 30"

86° 07' 30"  
46° 07' 30"



T 43N  
T 42N

T 43N  
T 42N

(Steuben SE)

2' 30"

2' 30"

46° 00'

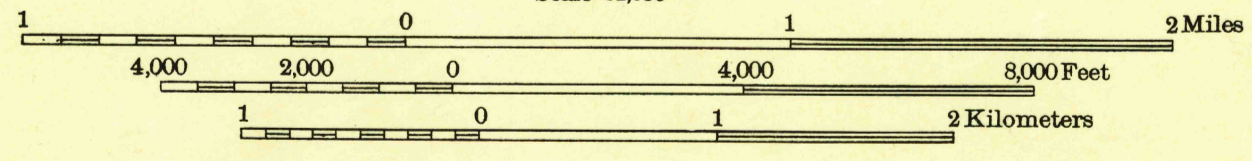
46° 00'

86° 15' R.16 W. R.15 W  
Glenn S. Smith, Division Engineer  
Compiled in part from aerial photographs  
taken by Air Corps, U. S. Army  
Control by U. S. Geological Survey  
Surveyed in 1931

(Manistique)

Polyconic projection. North American datum

Scale 1:31,680



TRUE NORTH  
MAGNETIC NORTH  
APPROXIMATE MEAN  
DECLINATION, 1931

(Cooks NE)  
86° 15' R.16 W. R.15 W  
46° 00'

86° 07' 30"  
46° 00' (Manistique)

MANISTIQUE RIVER, MICH.  
SW QUARTER

U. S. Board on  
Geographical Names

7.5'