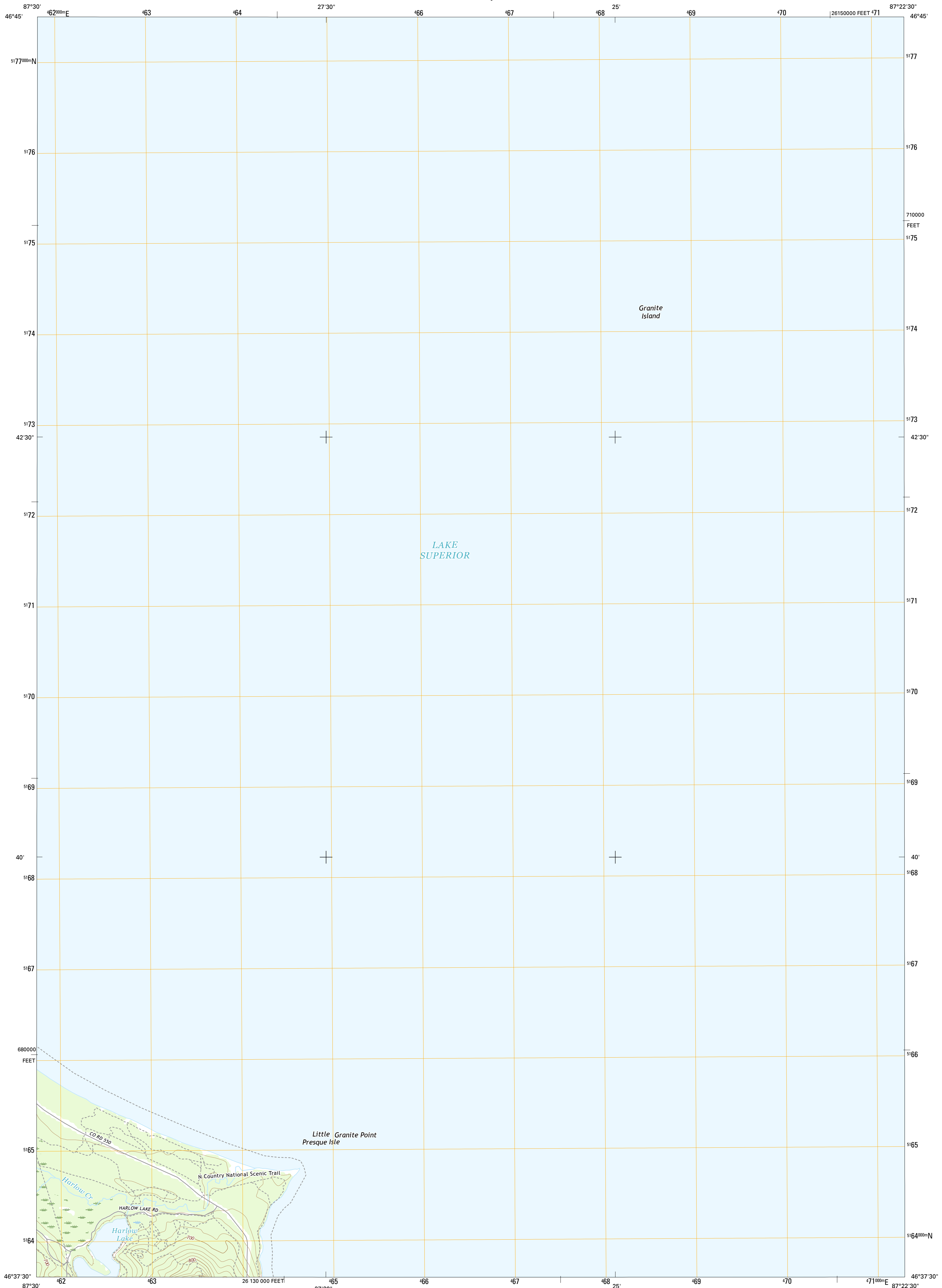




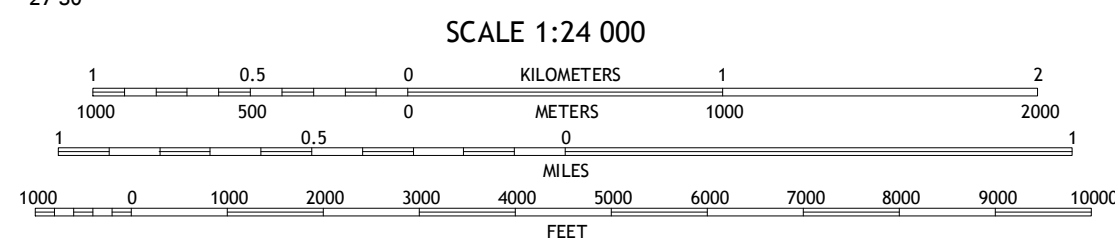
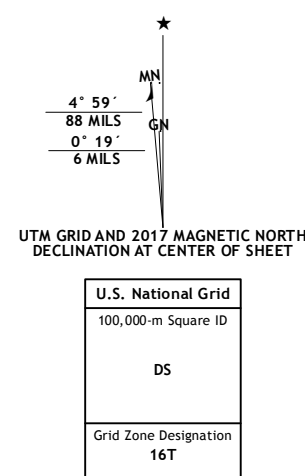
U.S. DEPARTMENT OF THE INTERIOR
U.S. GEOLOGICAL SURVEY



MARQUETTE NW QUADRANGLE
MICHIGAN-MARQUETTE CO.
7.5-MINUTE SERIES



Produced by the United States Geological Survey
North American Datum of 1983 (NAD83)
World Geodetic System of 1984 (WGS84). Projection and
1 000-meter grid: Universal Transverse Mercator, Zone 16T
10 000-foot ticks: Michigan Coordinate System of 1983 (north
zone)
This map is not a legal document. Boundaries may be
generalized for this map scale. Private lands within government
reservations may not be shown. Obtain permission before
entering private lands.
Imagery.....NAIP, November 2014
Roads.....U.S. Census Bureau, 2015 - 2016
Names.....GNIS, 2016
Hydrography.....National Hydrography Dataset, 2014
Contours.....National Elevation Dataset, 1998
Boundaries.....Multiple sources; see metadata file 1972 - 2016
Public Land Survey System.....BLM, 2016
Wetlands.....FWS National Wetlands Inventory 1977 - 2014



QUADRANGLE LOCATION

ROAD CLASSIFICATION

Expressway	Local Connector	Local Road
Secondary Hwy	Local Road	4WD
Ramp	US Route	State Route
Interstate Route	US Route	State Route

1	2	3
4	5	6
7	8	9

1 Granite Point
2
3
4 Buckroe
5
6 Negaunee
7 Marquette
8 Marquette OE E

ADJOINING QUADRANGLES

MARQUETTE NW, MI
2017



NGSN 7 8 3 0 1 6 9 1 1 2 2 N
NGA REF NO. U.S.G.S X 2 4 K 2 7 8 0 1