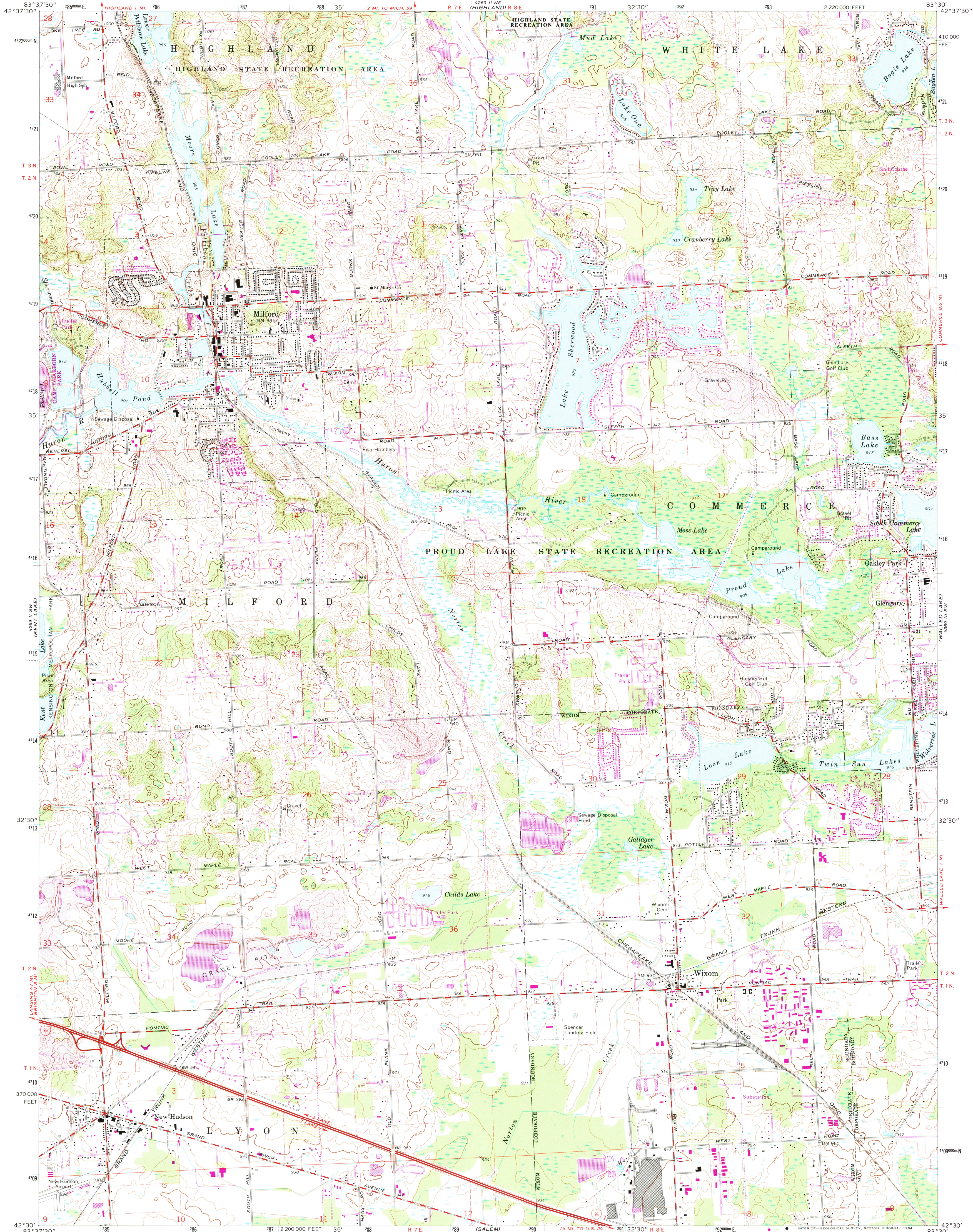
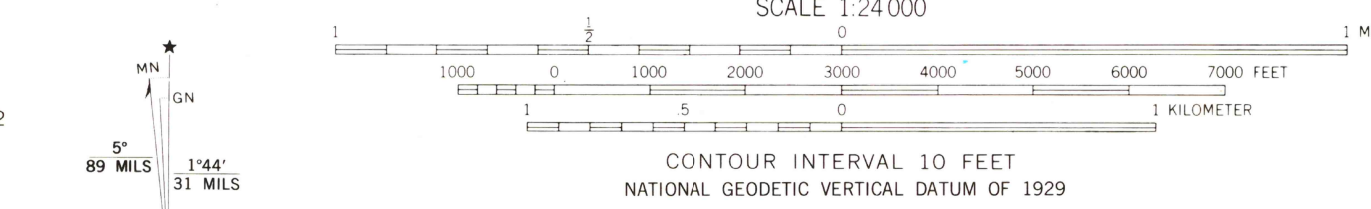


UNITED STATES  
DEPARTMENT OF THE INTERIOR  
GEOLOGICAL SURVEY

MILFORD QUADRANGLE  
MICHIGAN—OAKLAND CO.  
7.5 MINUTE SERIES (TOPOGRAPHIC)



Mapped, edited, and published by the Geological Survey in cooperation with State of Michigan agencies  
Control by USGS and USC&GS  
Planimetry by photogrammetric methods from aerial photographs taken 1952  
Topography by planimetric surveys 1942 and 1954. Revised from aerial photographs taken 1967. Field checked 1969  
Polyconic projection. 1927 North American datum  
10,000-foot grid based on Michigan coordinate system, south zone  
1000-meter Universal Transverse Mercator grid ticks, zone 17, shown in blue  
To place on the predicted North American Datum 1983, move the projection lines 6 meters west as shown by dashed corner ticks  
There may be private inholdings within the boundaries of the National or State reservations shown on this map



ROAD CLASSIFICATION

Primary highway, all weather, hard surface	Light-duty road, all weather, improved surface
Secondary highway, all weather, hard surface	Unimproved road, fair or dry weather
	Interstate Route

THIS MAP COMPLIES WITH NATIONAL MAP ACCURACY STANDARDS FOR SALE BY U.S. GEOLOGICAL SURVEY, RESTON, VIRGINIA 22092 AND GEOLOGICAL SURVEY DIVISION MICHIGAN DEPARTMENT OF NATURAL RESOURCES, LANSING, MICHIGAN 48909 A FOLDER DESCRIBING TOPOGRAPHIC MAPS AND SYMBOLS IS AVAILABLE ON REQUEST

Revisions shown in purple compiled from aerial photographs taken 1982 and other sources. This information not field checked. Map edited 1983

MICHIGAN  
QUADRANGLE LOCATION

MILFORD, MICH.  
N4230—W8330/7.5  
1969  
PHOTOREVISED 1983  
DMA 4269 II SE—SERIES V862

MAR 21 1984  
RETURN TO  
USGS AND HISTORICAL MAP ARCHIVES