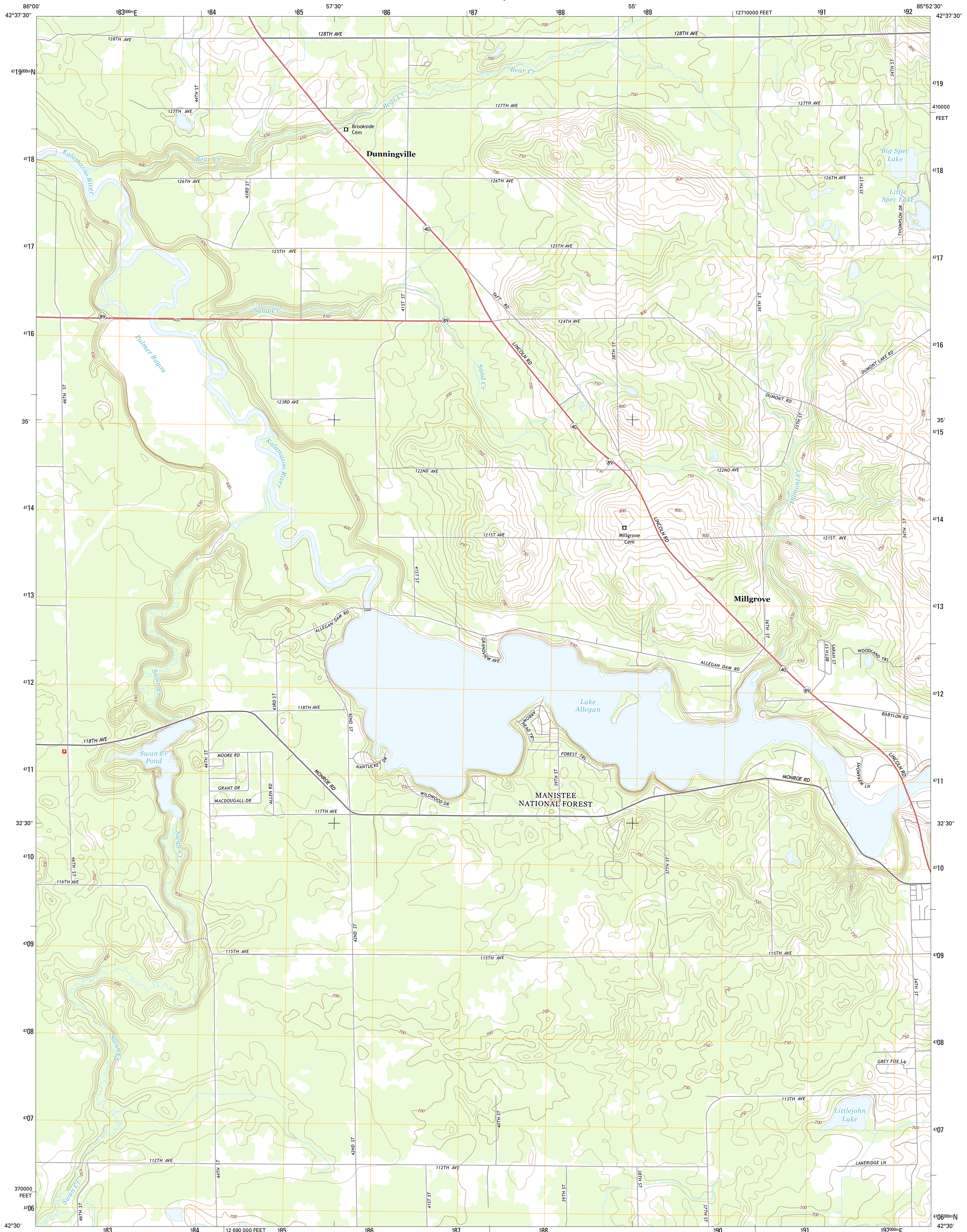




U.S. DEPARTMENT OF THE INTERIOR  
U.S. GEOLOGICAL SURVEY



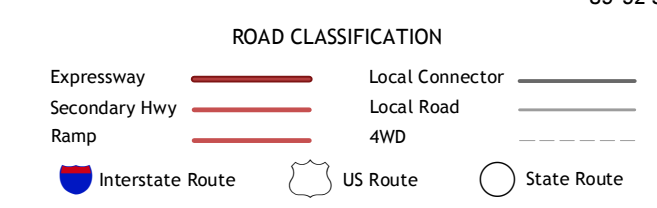
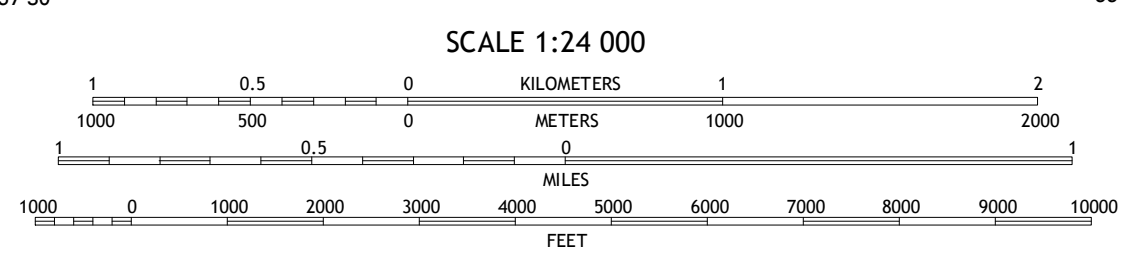
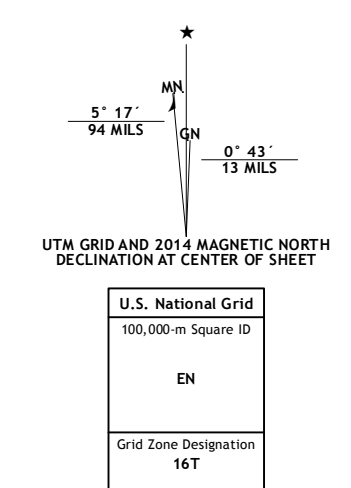
MILLGROVE QUADRANGLE  
MICHIGAN-ALLEGAN CO.  
7.5-MINUTE SERIES



**Produced by the United States Geological Survey**  
North American Datum of 1983 (NAD83)  
World Geodetic System of 1984 (WGS84), Projection and  
1000-meter grid: Universal Transverse Mercator, Zone 16T  
10 000-foot ticks: Michigan Coordinate System of 1983 (south zone)

This map is not a legal document. Boundaries may be generalized for this map scale. Private lands within government reservations may not be shown. Obtain permission before entering private lands.

Imagery: NHAIP, June 2012  
Roads: HERE, ©2013  
Names: GNIS, 2013  
Hydrography: National Hydrography Dataset, 2012  
Contours: National Elevation Dataset, 1999  
Boundaries: Multiple sources; see metadata file 1972 - 2013  
Public Land Survey System: BLM, 2011



1	2	3
4	5	6
7	8	

ADJOINING QUADRANGLES

1 Hamilton West  
2 Hamilton East  
3 Burnips  
4 Fenville  
5 Allegan  
6 Pullman  
7 Bloomingdale  
8 Merson

**MILLGROVE, MI**  
2014

