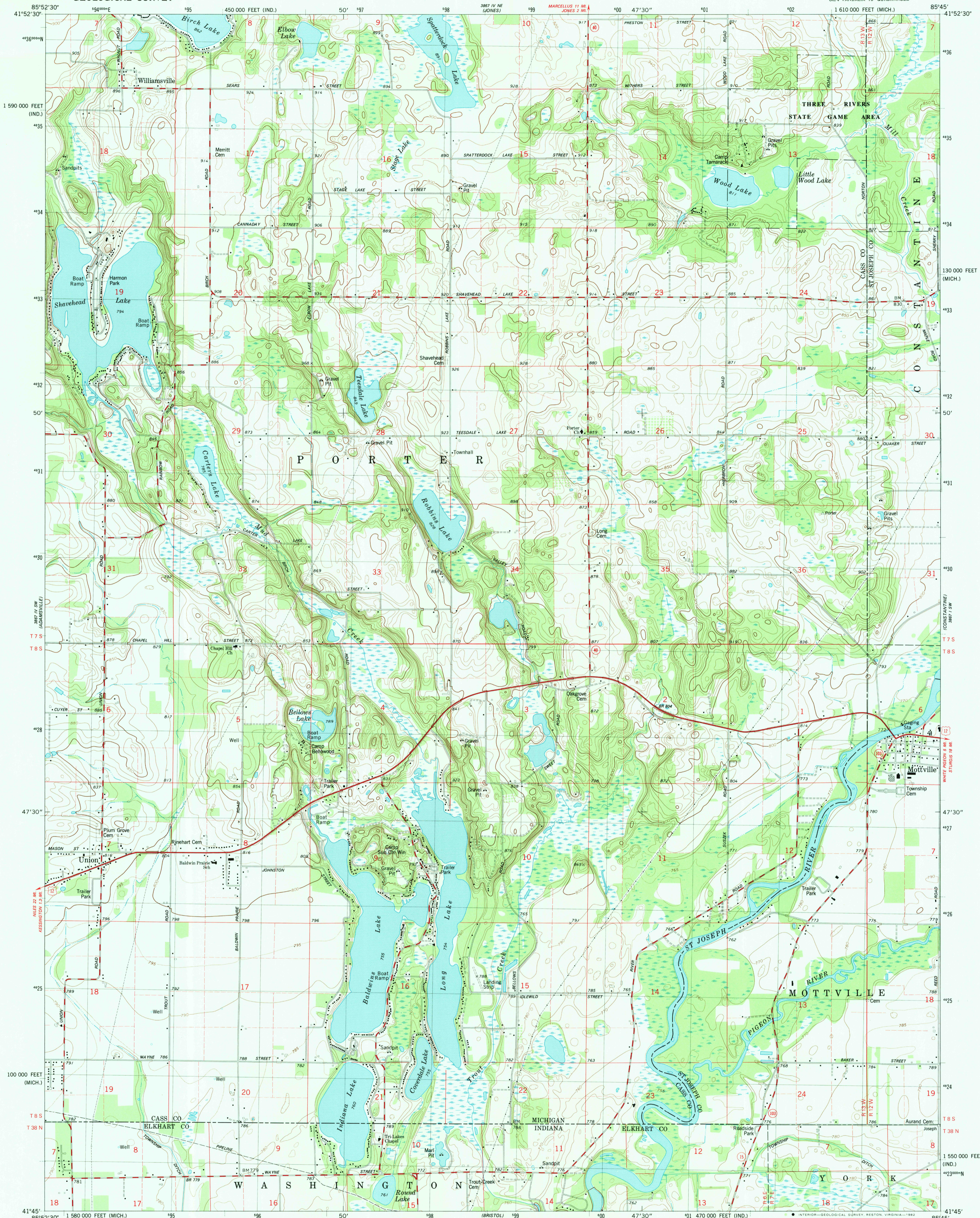


UNITED STATES  
DEPARTMENT OF THE INTERIOR  
GEOLOGICAL SURVEY

MOTTVILLE QUADRANGLE  
MICHIGAN-INDIANA  
7.5 MINUTE SERIES (TOPOGRAPHIC)  
SE/4 VANDALIA 15' QUADRANGLE



Mapped, edited, and published by the Geological Survey

Control by USGS and NOS/NOAA

Topography by photogrammetric methods from aerial photographs taken 1975. Field checked 1977. Map edited 1981

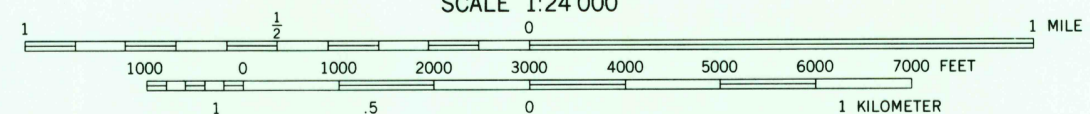
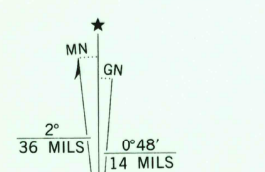
Projection: Michigan coordinate system, south zone (Lambert conformal conic)

10,000-foot grid ticks based on Michigan coordinate system, south zone and Indiana coordinate system, east zone 1000-meter Universal Transverse Mercator grid, zone 16

1927 North American Datum

To place on the predicted North American Datum 1983 move the projection lines 1 meter west as shown by dashed corner ticks

There may be private inholdings within the boundaries of the National or State reservations shown on this map



CONTOUR INTERVAL 10 FEET  
DOTTED LINES REPRESENT 5-FOOT CONTOURS  
NATIONAL GEODETIC VERTICAL DATUM OF 1929

THIS MAP COMPLIES WITH NATIONAL MAP ACCURACY STANDARDS FOR SALE BY U.S. GEOLOGICAL SURVEY, RESTON, VIRGINIA 22092 AND BY THE GEOLOGICAL SURVEY DIVISION MICHIGAN DEPARTMENT OF NATURAL RESOURCES, LANSING, MICHIGAN 48909 AND INDIANA DEPARTMENT OF NATURAL RESOURCES, INDIANAPOLIS, INDIANA 46204 A FOLDER DESCRIBING TOPOGRAPHIC MAPS AND SYMBOLS IS AVAILABLE ON REQUEST



QUADRANGLE LOCATION

ROAD CLASSIFICATION

- Primary highway, hard surface
- Secondary highway, hard surface
- Unimproved road
- Light duty road, hard or improved surface
- U.S. Route
- State Route

MOTTVILLE, MICH.-IND.  
SE/4 VANDALIA 15' QUADRANGLE  
N4145-W8545/7.5

1981

DMA 3887 IV SE-SERIES V862

DEC 22 1982

Handwritten initials 'JWC'.