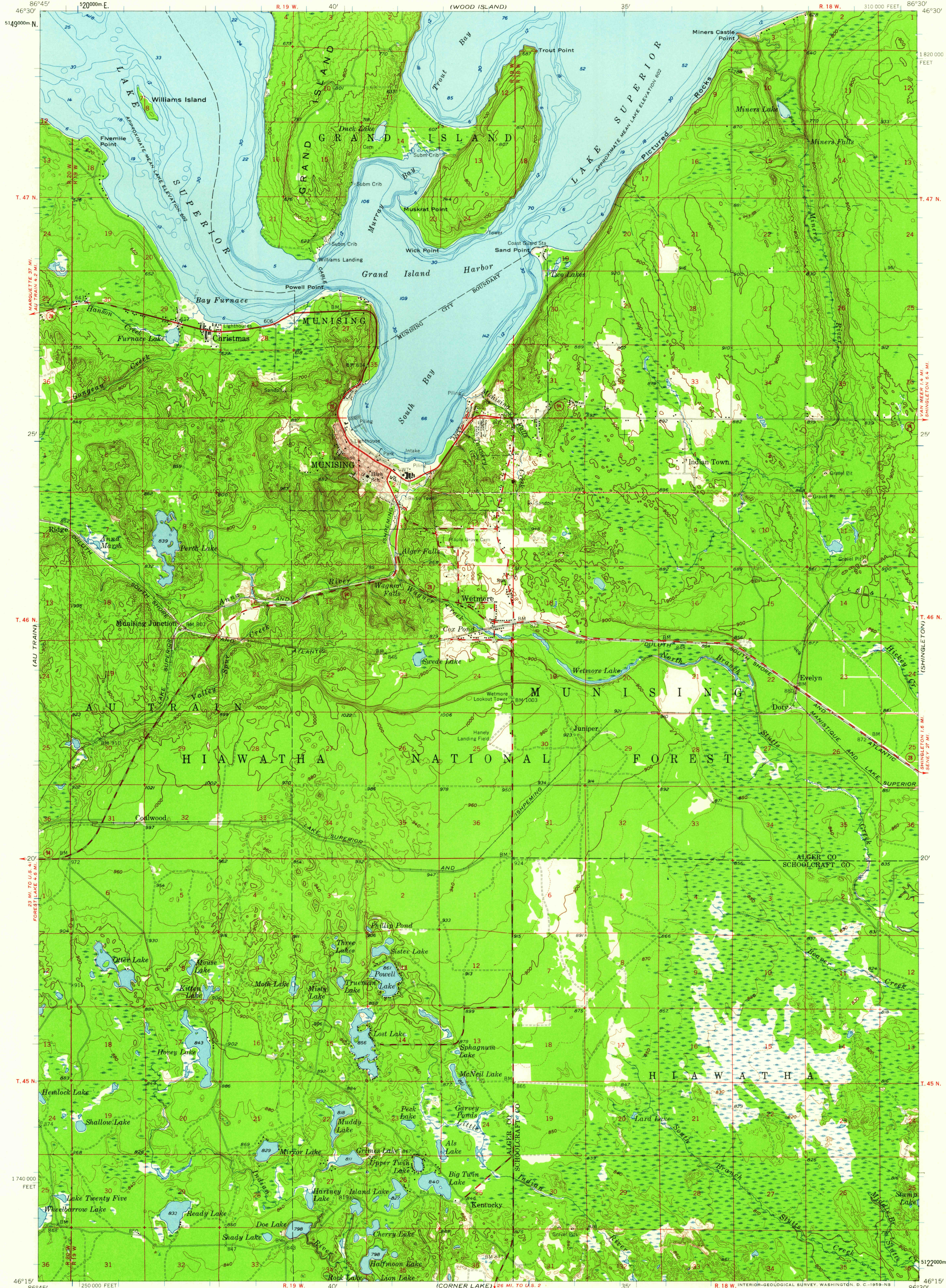
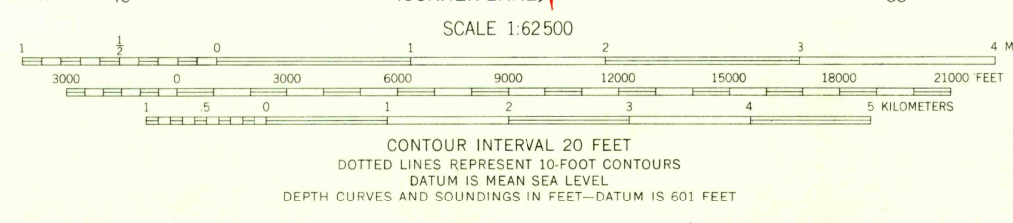


(GRAND PORTAL POINT)



Maped, edited, and published by the Geological Survey  
Control by USGS, USC&GS, and U.S. Lake Survey  
Topography from aerial photographs by photogrammetric methods  
Aerial photographs taken 1953. Field check 1958  
Hydrography compiled from U.S. Lake Survey charts 93  
and 931 (1955)  
Polyconic projection. 1927 North American datum  
10,000-foot grid based on Michigan coordinate system, central zone  
1000-meter Universal Transverse Mercator grid ticks,  
zone 16, shown in blue  
Red tint indicates area in which only  
landmark buildings are shown



ROAD CLASSIFICATION

Heavy-duty	Light-duty
Medium-duty	Unimproved dirt
State Route	



USGS  
Historical File  
Topographic Division  
MUNISING, MICH.  
N 4615-W 8630/15  
1958

U.S.G.S.  
FILE COPY  
TOPOGRAPHIC DIVISION

SEP 15 1959

2515