

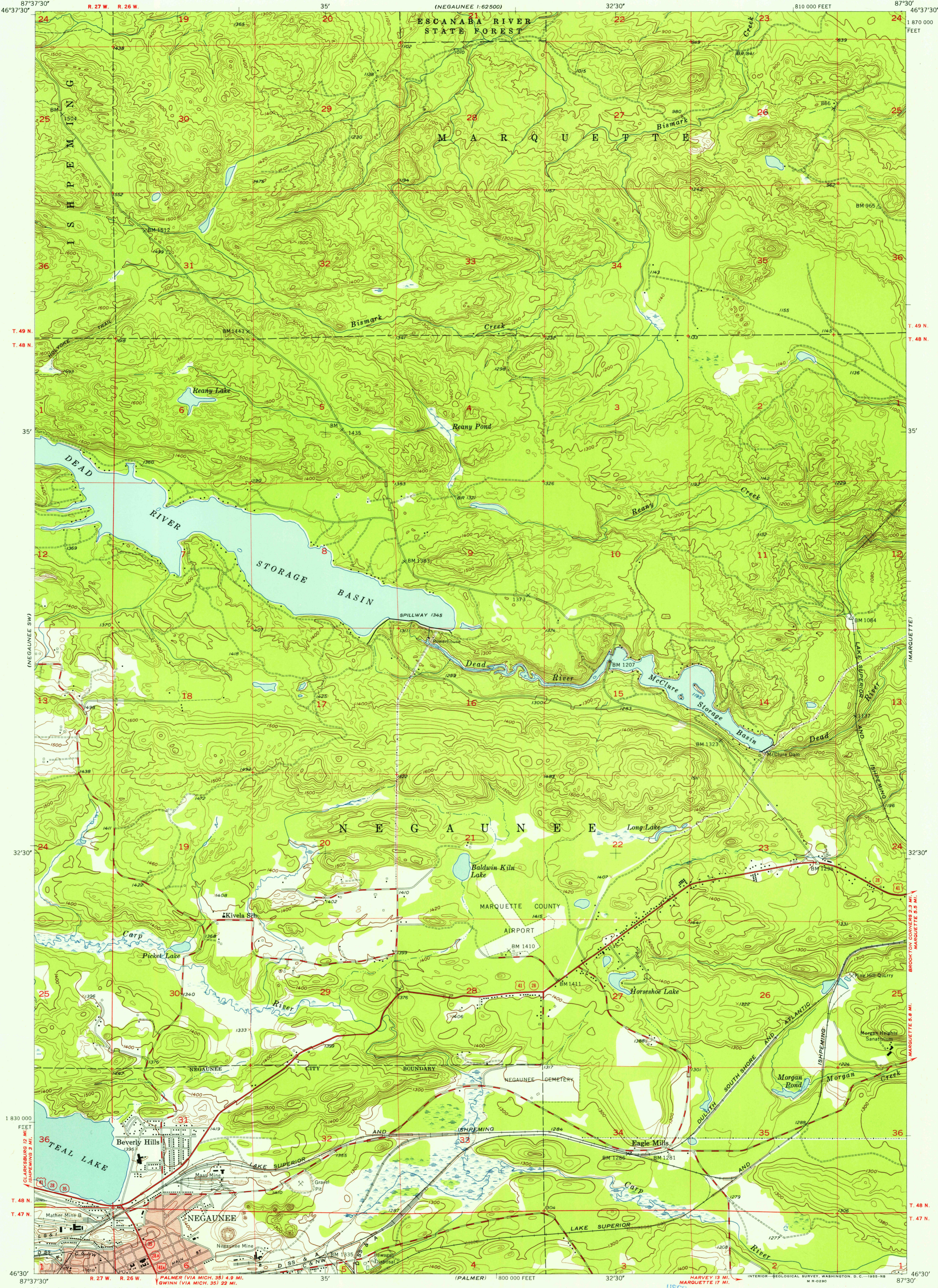
(NEGAUNEE)
1:62,500

UNITED STATES
DEPARTMENT OF THE INTERIOR
GEOLOGICAL SURVEY

MICHIGAN
STATE HIGHWAY DEPARTMENT
CHARLES M. ZIEGLER
STATE HIGHWAY COMMISSIONER

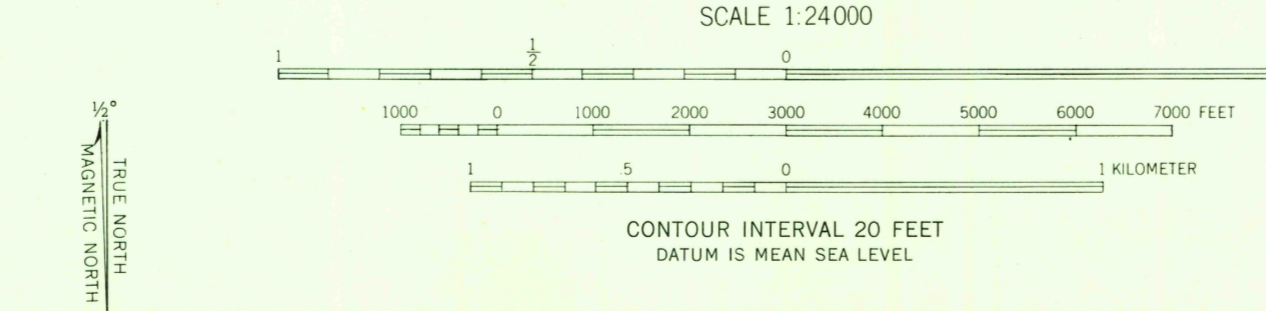
NEGAUNEE QUADRANGLE
MICHIGAN—MARQUETTE CO.
7.5 MINUTE SERIES (TOPOGRAPHIC)
SE/4 NEGAUNEE 15' QUADRANGLE

(MARQUETTE NW)



U.S.G.S.
FILE COPY
TOPOGRAPHIC DIVISION

Mapped, edited, and published by the Geological Survey
Control by USGS and USC&GS
Topography from aerial photographs by multiplex methods
Aerial photographs taken 1951-1952. Field check 1953
Polyconic projection. 1927 North American datum
10,000-foot grid based on Michigan coordinate system,
west zone
Red tint indicates area in which only
landmark buildings are shown



ROAD CLASSIFICATION
Heavy-duty **4 LANE 16 LANE** Light-duty
Medium-duty **4 LANE 16 LANE** Unimproved dirt
U. S. Route State Route

NEGAUNEE, MICH.
SE/4 NEGAUNEE 15' QUADRANGLE
N 4630—W 8730/7.5

U.S.G.S.
FILE COPY
TOPOGRAPHIC DIVISION

THIS MAP COMPLIES WITH NATIONAL MAP ACCURACY STANDARDS
FOR SALE BY U. S. GEOLOGICAL SURVEY, WASHINGTON 25, D. C.
A FOLDER DESCRIBING TOPOGRAPHIC MAPS AND SYMBOLS IS AVAILABLE ON REQUEST

1953

DEC 7 1955