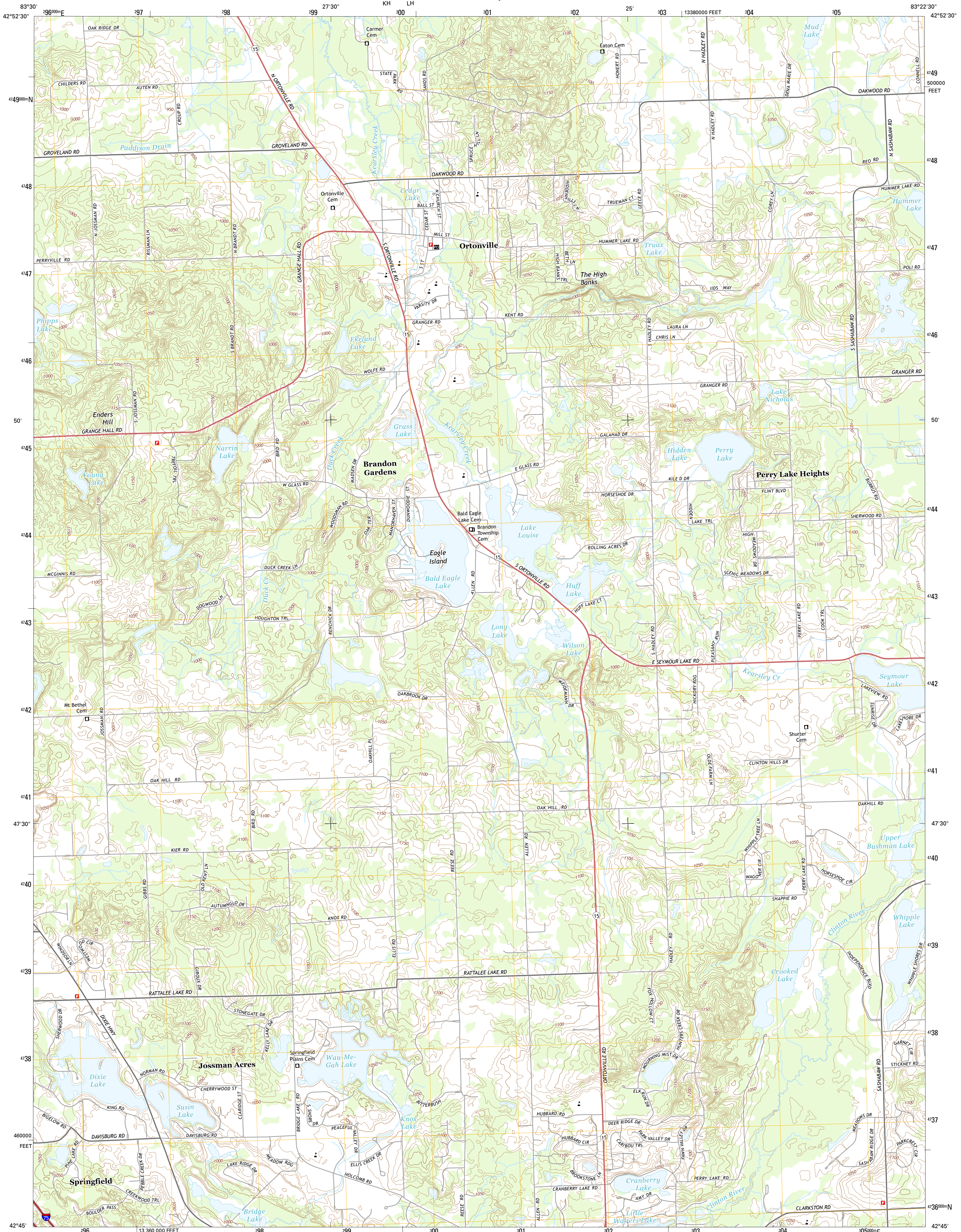




U.S. DEPARTMENT OF THE INTERIOR  
U.S. GEOLOGICAL SURVEY



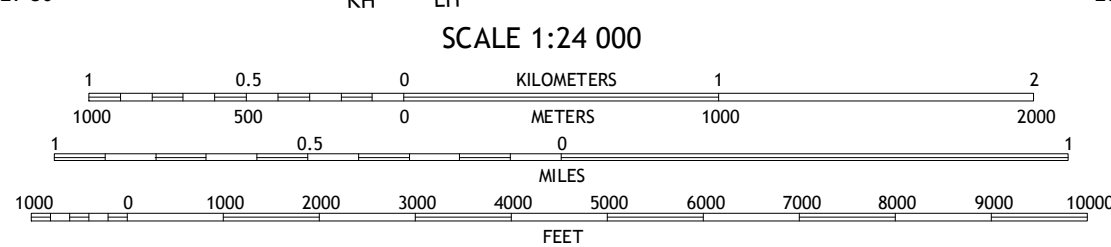
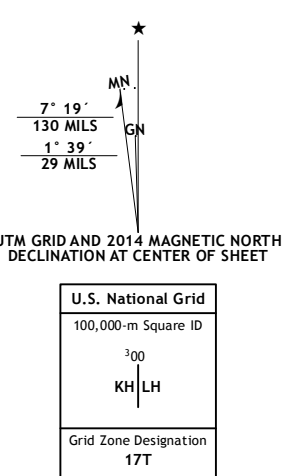
ORTONVILLE QUADRANGLE  
MICHIGAN-OAKLAND CO.  
7.5-MINUTE SERIES



Produced by the United States Geological Survey  
North American Datum of 1983 (NAD83)  
World Geodetic System of 1984 (WGS84). Projection and  
1 000-meter grid: Universal Transverse Mercator, Zone 17T  
10 000-foot ticks: Michigan Coordinate System of 1983 (south  
zone)

This map is not a legal document. Boundaries may be  
generalized for this map scale. Private lands within government  
reservations may not be shown. Obtain permission before  
entering private lands.

Imagery: NAIP, June 2012 - July 2012  
Roads: HERE, ©2013  
Names: GNIS, 2013  
Hydrography: National Hydrography Dataset, 2012  
Contours: National Elevation Dataset, 1999  
Boundaries: Multiple sources; see metadata file 1972 - 2013  
Public Land Survey System: BLM, 2011



QUADRANGLE LOCATION

ROAD CLASSIFICATION

Expressway  
Secondary Hwy  
Ramp  
Interstate Route  
Local Connector  
Local Road  
4WD  
US Route  
State Route

1	2	3	1 Goodrich
2	3	4	2 Hadley
3	4	5	3 Metamora
4	5	6	4 Davidsburg
5	6	7	5 Oxford
6	7	8	6 Highland
7	8		7 Clarkston
8			8 Pontiac North

ADJOINING QUADRANGLES

ORTONVILLE, MI  
2014



NSN 7540-01-000-0000  
3 01 6 3 3 4 3 4 9 3  
U.S. G.S. X 2 4 K 3 4 9 3  
NGA REF NO.