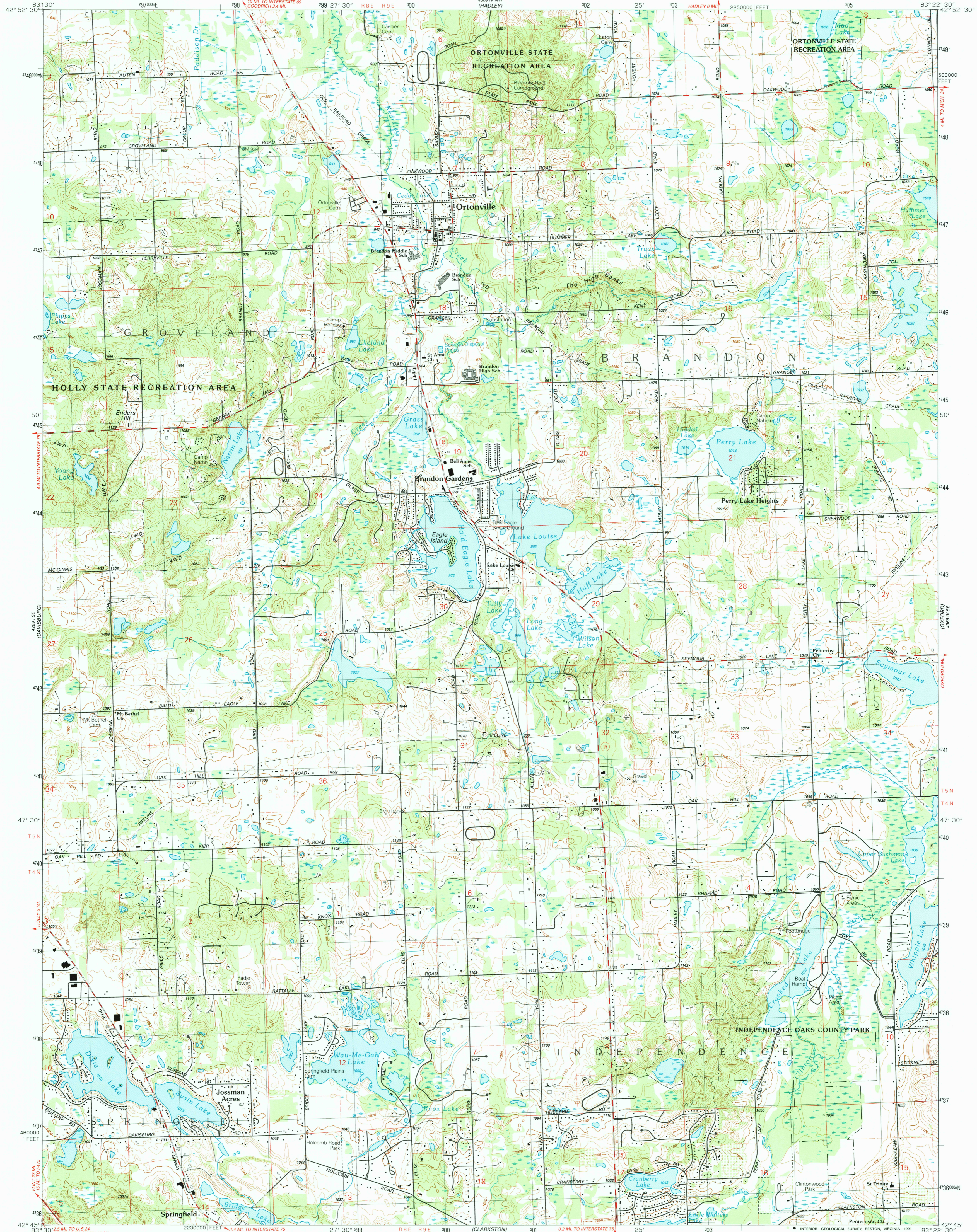
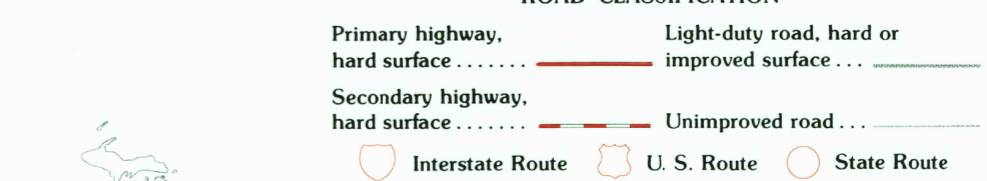
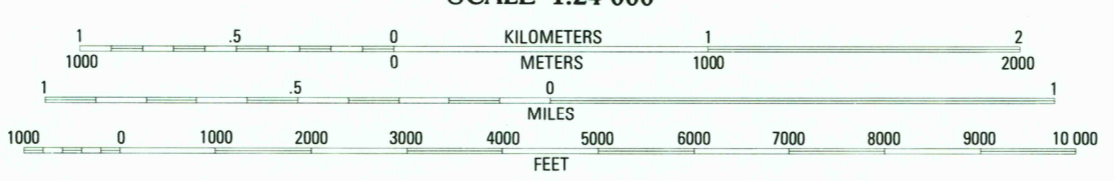
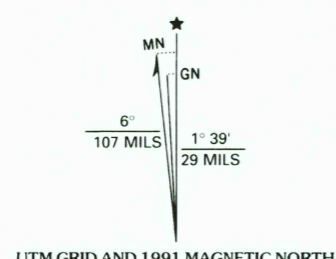


UNITED STATES
DEPARTMENT OF THE INTERIOR
GEOLOGICAL SURVEY

ORTONVILLE QUADRANGLE
MICHIGAN-OAKLAND CO.
7.5 MINUTE SERIES (TOPOGRAPHIC)



Produced by the United States Geological Survey
Control by USGS and NOS/NOAA
Compiled from aerial photographs taken 1986
Field checked 1988. Map edited 1991
Projection and 10,000-foot grid ticks: Michigan coordinate system, south zone (Lambert conformal conic)
1000-meter Universal Transverse Mercator grid, zone 17
1927 North American Datum
To place on the predicted North American Datum 1983, move the projection lines 6 meters west as shown by dashed corner ticks



There may be private inholdings within the boundaries of the National or State reservations shown on this map
Fine red dashed lines indicate selected fence and field lines where generally visible on aerial photographs. This information is unchecked

THIS MAP COMPLIES WITH NATIONAL MAP ACCURACY STANDARDS
FOR SALE BY U.S. GEOLOGICAL SURVEY, DENVER, COLORADO 80225, OR RESTON, VIRGINIA 22092
AND GEOLOGICAL SURVEY DIVISION
MICHIGAN DEPARTMENT OF NATURAL RESOURCES, LANSING, MICHIGAN 48909
A FOLDER DESCRIBING TOPOGRAPHIC MAPS AND SYMBOLS IS AVAILABLE ON REQUEST



ORTONVILLE, MICH.
42083-G4-TF-024
1991
DMA 4369 IV SW-SERIES V862

