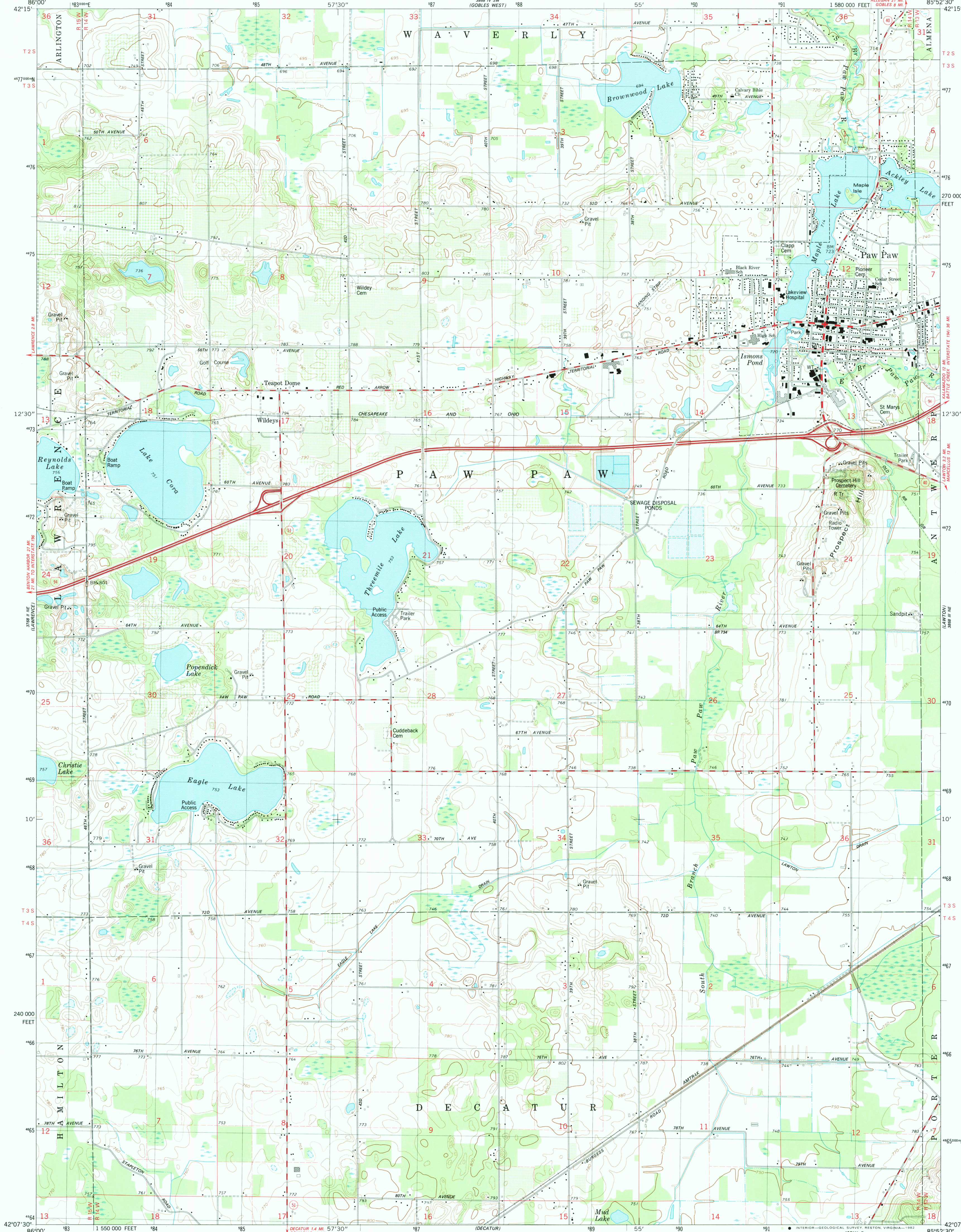
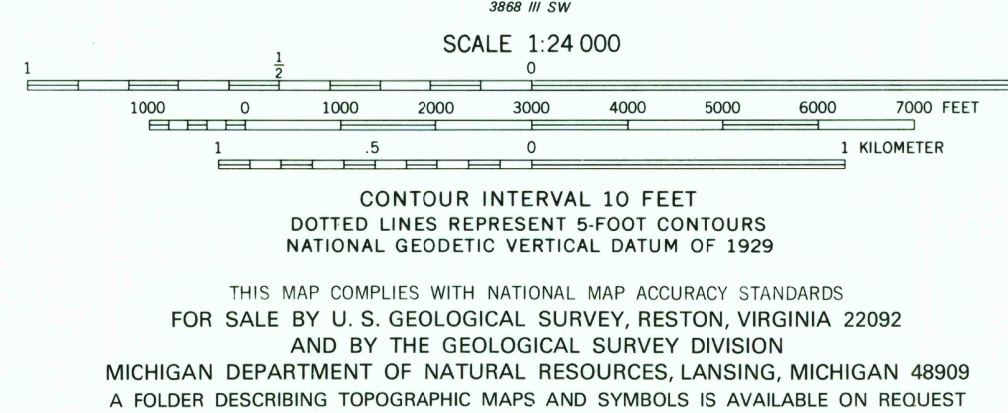
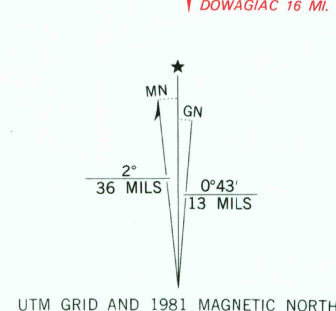


UNITED STATES
DEPARTMENT OF THE INTERIOR
GEOLOGICAL SURVEY

PAW PAW QUADRANGLE
MICHIGAN-VAN BUREN CO.
7.5 MINUTE SERIES (TOPOGRAPHIC)
NW/4 MARCELLUS 15' QUADRANGLE



Mapped, edited, and published by the Geological Survey
Control by USGS and NOS/NOAA
Topography by photogrammetric methods from aerial photographs taken 1976. Field checked 1978. Map edited 1981
Projection and 10,000-foot grid ticks: Michigan coordinate system, south zone (Lambert conformal conic)
1000-meter Universal Transverse Mercator grid, zone 16 1927 North American Datum
To place on the predicted North American Datum 1983 move the projection lines 1 meter north and 2 meters east as shown by dashed corner ticks
Fine red dashed lines indicate selected fence and field lines where generally visible on aerial photographs. This information is unchecked



ROAD CLASSIFICATION

Primary highway, hard surface	Light-duty road, hard or improved surface
Secondary highway, hard surface	Unimproved road
Interstate	U.S. Route
	State Route

PAW PAW, MICH.
NW/4 MARCELLUS 15' QUADRANGLE
N4207.5-W8552.5/7.5

1981
DMA 3668 III NW-SERIES V862

DEC 08 1982

2000