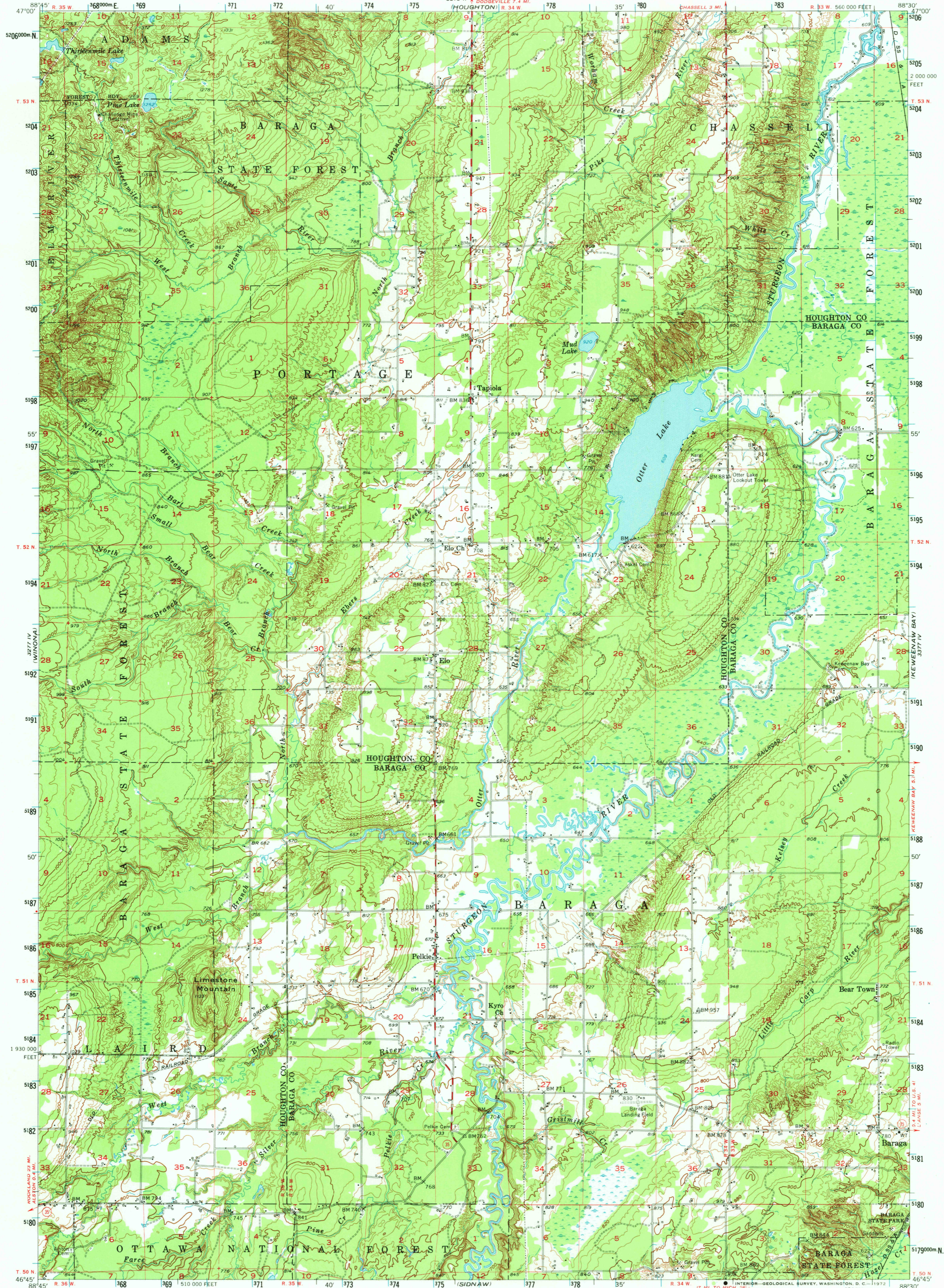
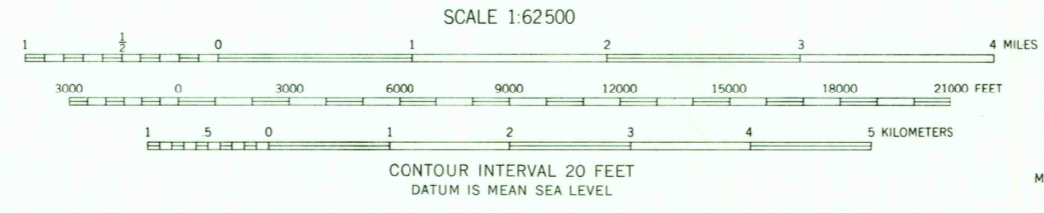


UNITED STATES
DEPARTMENT OF THE INTERIOR
GEOLOGICAL SURVEY

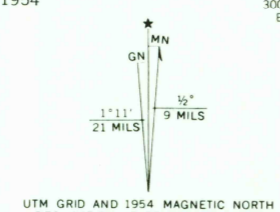
PELKIE QUADRANGLE
MICHIGAN
15 MINUTE SERIES (TOPOGRAPHIC)



Mapped, edited, and published by the Geological Survey
Control by USGS and USC&GS
Topography from aerial photographs by photogrammetric methods
Aerial photographs taken 1951 and 1953. Field check 1954
Polyconic projection. 1927 North American datum
10,000-foot grid based on Michigan coordinate system,
west zone
1000-meter Universal Transverse Mercator grid ticks,
zone 16, shown in blue



ROAD CLASSIFICATION
Heavy duty ——— Light duty ———
Medium duty ——— Unimproved dirt ———
U. S. Route (red circle) State Route (black circle)



THIS MAP COMPLIES WITH NATIONAL MAP ACCURACY STANDARDS
FOR SALE BY U. S. GEOLOGICAL SURVEY, WASHINGTON, D. C. 20242
A FOLDER DESCRIBING TOPOGRAPHIC MAPS AND SYMBOLS IS AVAILABLE ON REQUEST

PELKIE, MICH.
N4645-W8830/15
1954
AMS 3277 I-SERIES V762

MAR 5 1973

USGS
HISTORICAL FILE
TOPOGRAPHIC DIVISION

3790