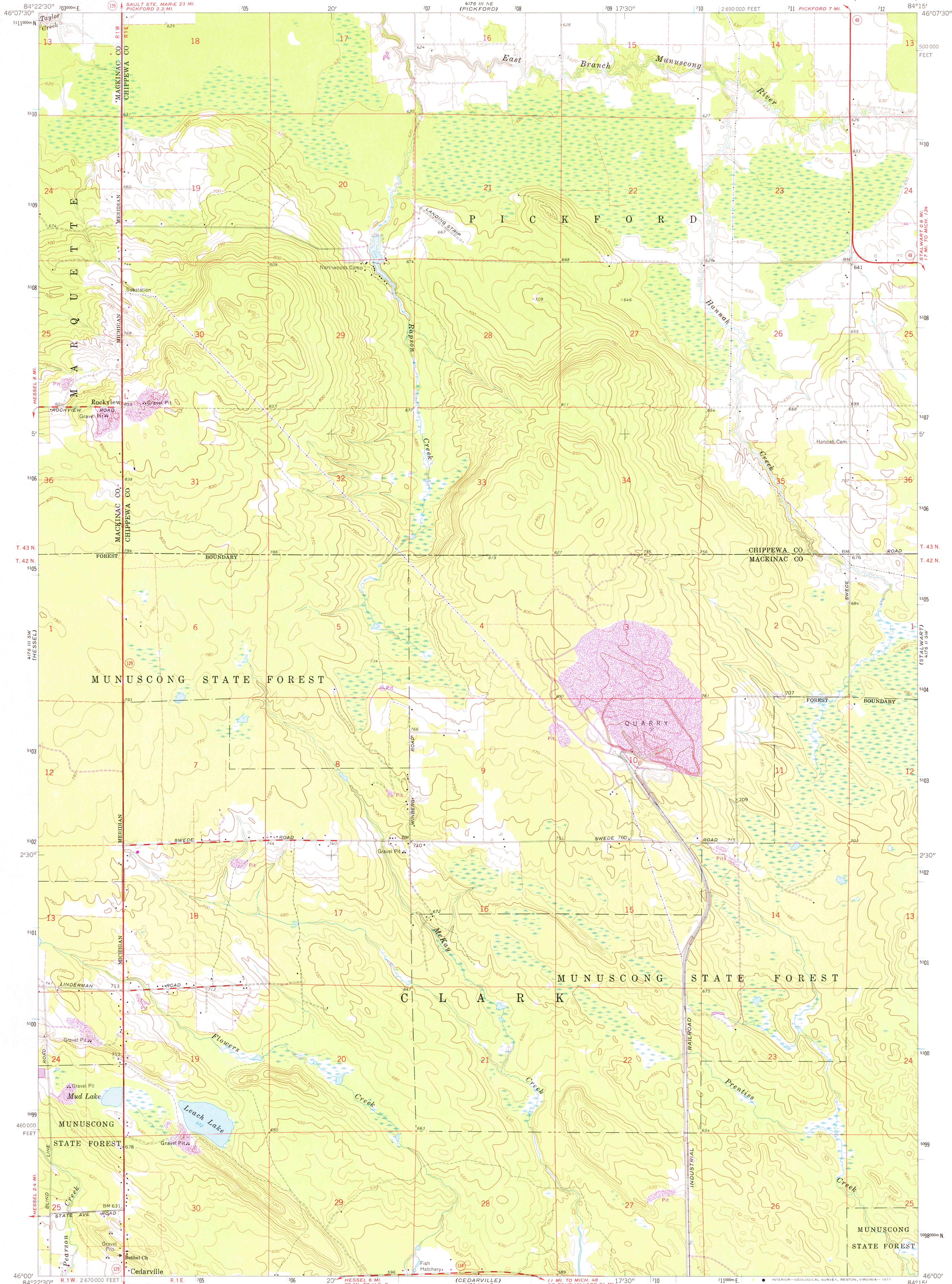


UNITED STATES
DEPARTMENT OF THE INTERIOR
GEOLOGICAL SURVEY

PICKFORD SE QUADRANGLE
MICHIGAN
7.5 MINUTE SERIES (TOPOGRAPHIC)



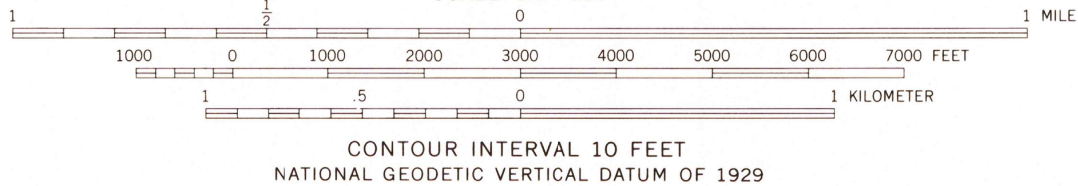
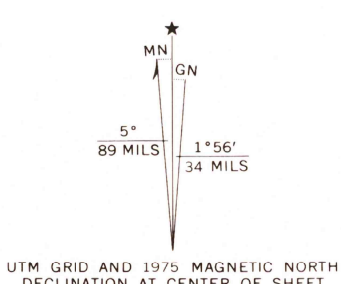
Mapped, edited, and published by the Geological Survey

Control by USGS and USC&GS

Topography by photogrammetric methods from aerial photographs taken 1954-55. Field checked 1964
Polyconic projection. 1927 North American datum
10,000 foot grid based on Michigan coordinate system, north zone
1000-meter Universal Transverse Mercator grid ticks, zone 16 shown in blue

Fine red dashed lines indicate selected fence and field lines where generally visible on aerial photographs
This information is uncheckered

Revisions shown in purple compiled from aerial photographs taken 1975. This information not field checked



THIS MAP COMPLIES WITH NATIONAL MAP ACCURACY STANDARDS
FOR SALE BY U. S. GEOLOGICAL SURVEY, RESTON, VIRGINIA 22092
A FOLDER DESCRIBING TOPOGRAPHIC MAPS AND SYMBOLS IS AVAILABLE ON REQUEST



USGS PICKFORD SE, MICH.
Historical File N4600-W8415/7.5
Topographic Division 1964
PHOTOREVISED 1975
AMS 4176 III SE-SERIES V862

2950
SEP 26 1977