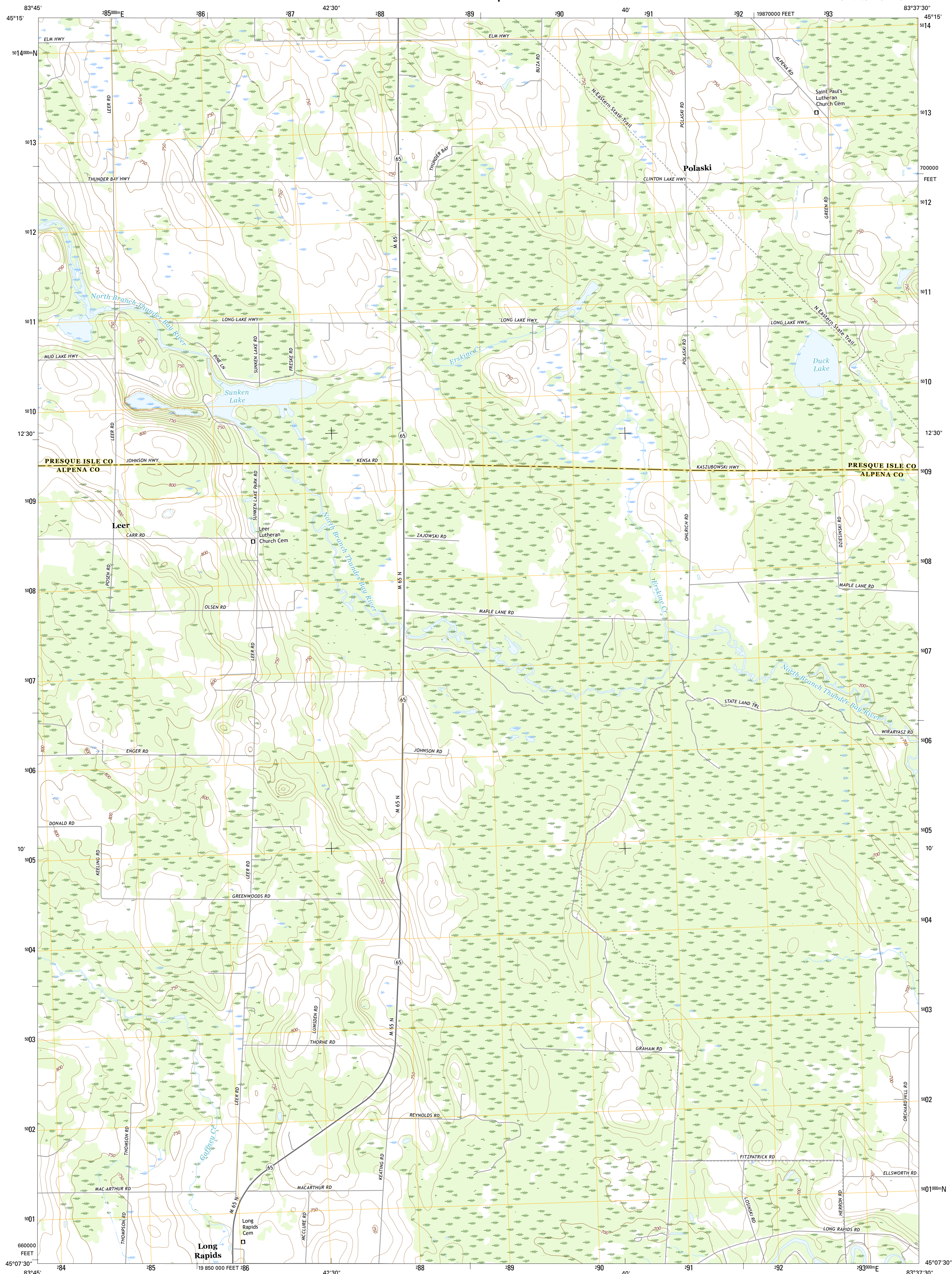




U.S. DEPARTMENT OF THE INTERIOR
U.S. GEOLOGICAL SURVEY



POLASKI QUADRANGLE
MICHIGAN
7.5-MINUTE SERIES



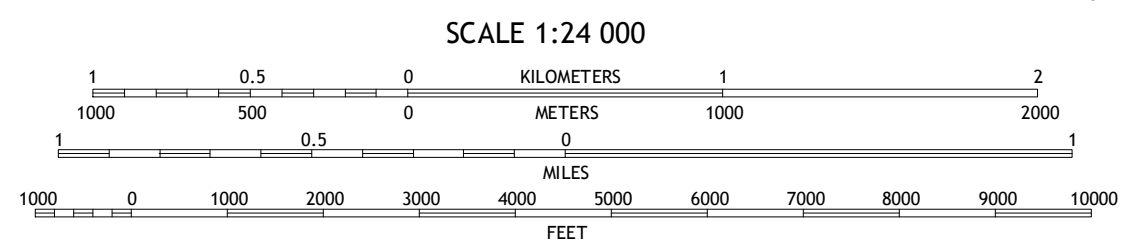
Produced by the United States Geological Survey
North American Datum of 1983 (NAD83)
World Geodetic System of 1984 (WGS84). Projection and
1000-meter grid: Universal Transverse Mercator, Zone 17T
10 000-foot ticks: Michigan Coordinate System of 1983 (central
zone)

This map is not a legal document. Boundaries may be
generalized for this map scale. Private lands within government
reservations may not be shown. Obtain permission before
entering private lands.

Imagery.....NAIP, November 2014
Roads.....U.S. Census Bureau, 2015 - 2016
Names.....GNIS, 2016
Hydrography.....National Hydrography Dataset, 2014
Contours.....National Elevation Dataset, 1998
Boundaries.....Multiple sources; see metadata file 1972 - 2016
Public Land Survey System.....BLM, 2016
Wetlands.....FWS National Wetlands Inventory 1977 - 2014

UTM GRID AND 2017 MAGNETIC NORTH
DECLINATION AT CENTER OF SHEET

U.S. National Grid	17T
100,000-m Square ID	KL
Grid Zone Designation	17T



ROAD CLASSIFICATION

Expressway	Local Connector
Secondary Hwy	Local Road
Ramp	4WD
Interstate Route	US Route
	State Route

1	2	3
4	5	6
7	8	

ADJOINING QUADRANGLES

- 1 Metz
- 2 Posen
- 3 Thompkins Harbor
- 4 Hillman NE
- 5 Long Lake West
- 6 Jewett Creek
- 7 Lachine
- 8 Lake Winyah

POLASKI, MI
2017

