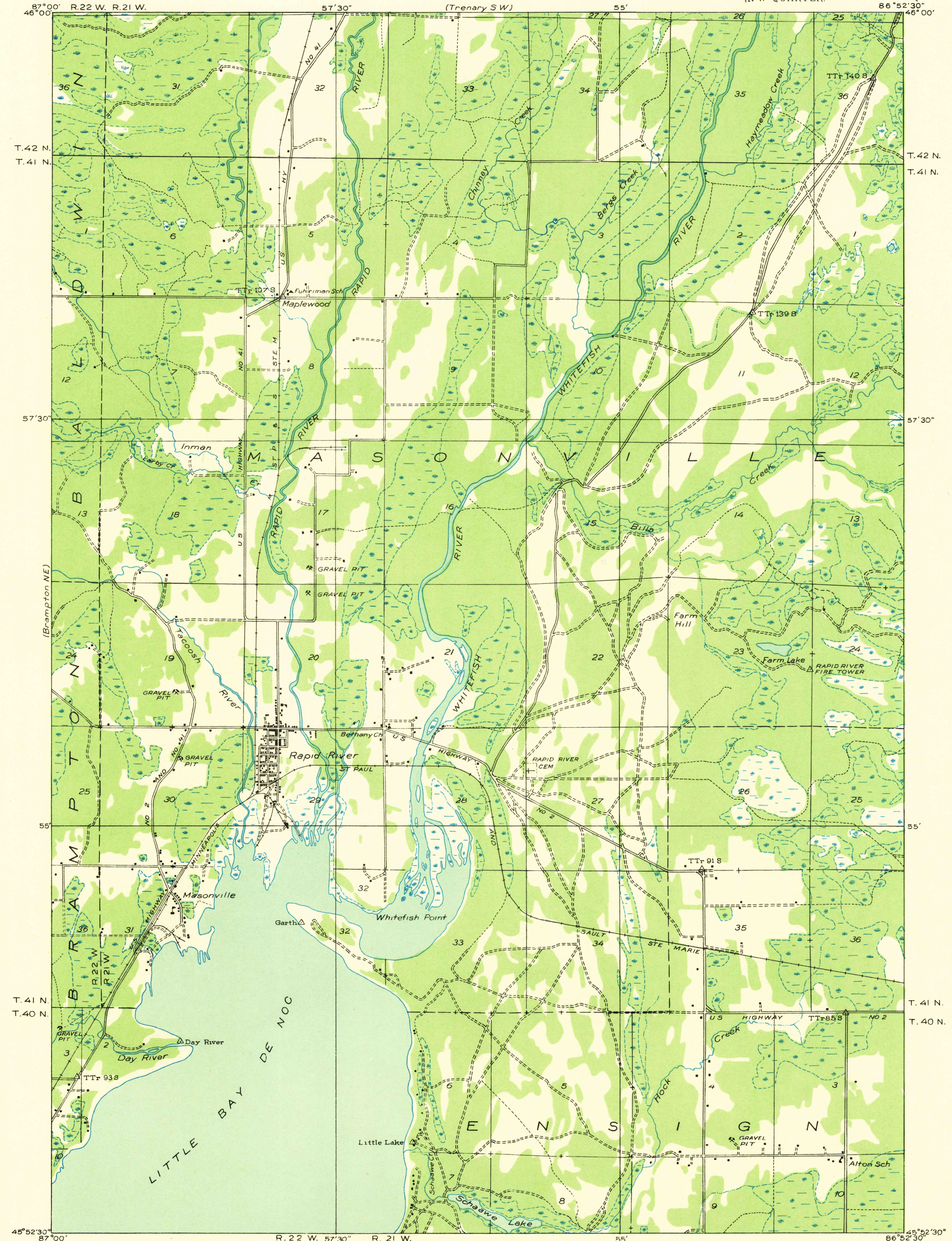


Advance sheet
Subject to correction

(Rock SE)

(Trenary SE)



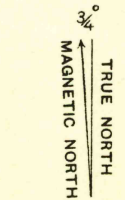
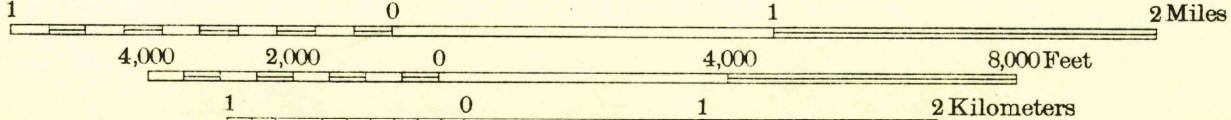
Glenn S. Smith, Division Engineer
Compiled by U. S. Geological Survey after field examination
of aerial photographs taken by Air Corps, U. S. Army
Control by U. S. Geological Survey and U. S. Lake Survey
Field examination in 1932

Polyconic projection. North American datum

USGS
Historical File
Topographic Division

U.S.G.S.
FILE COPY
TOPOGRAPHIC DIVISION

Scale 81,680



APPROXIMATE MEAN
DECLINATION, 1932

RAPID RIVER, MICH.
(NW)

(Brampton SE)