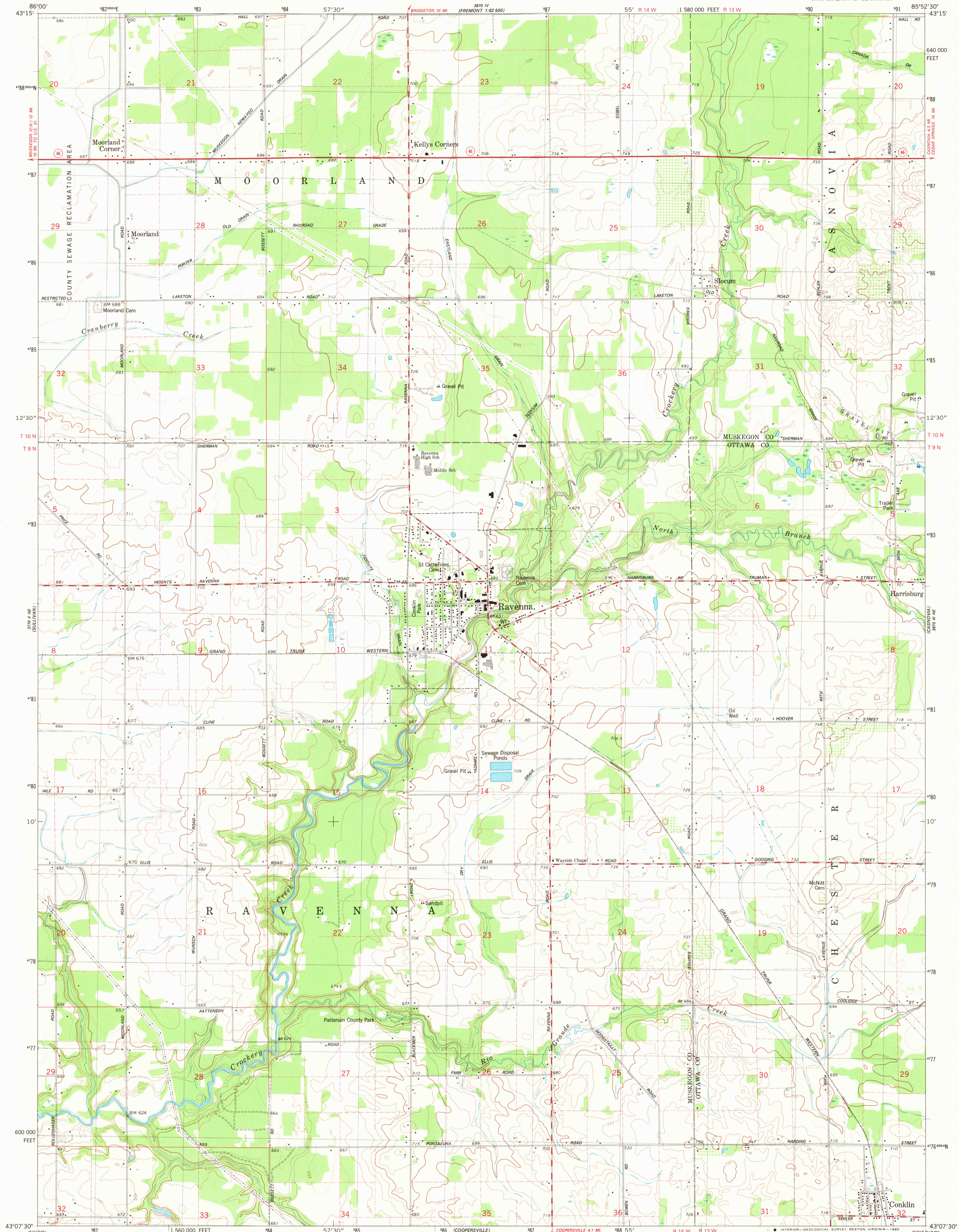
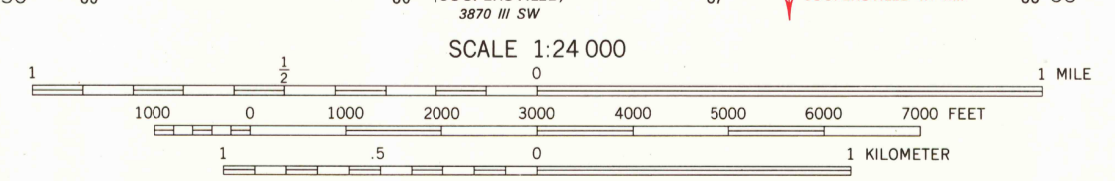
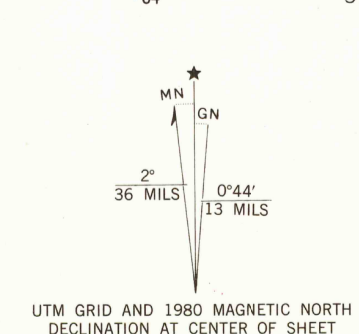


UNITED STATES  
DEPARTMENT OF THE INTERIOR  
GEOLOGICAL SURVEY

RAVENNA QUADRANGLE  
MICHIGAN  
7.5 MINUTE SERIES (TOPOGRAPHIC)  
NW/4 RAVENNA 15' QUADRANGLE



Mapped, edited, and published by the Geological Survey  
Control by USGS and NOS/NOAA  
Topography by photogrammetric methods from aerial photographs taken 1973. Field checked 1975. Map edited 1980  
Projection and 10,000-foot grid ticks: Michigan coordinate system, south zone (Lambert conformal conic)  
1000-meter Universal Transverse Mercator grid, zone 16  
1927 North American Datum  
To place on the predicted North American Datum 1983 move the projection lines 1 meter north and 2 meters east as shown by dashed corner ticks  
Fine red dashed lines indicate selected fence and field lines where generally visible on aerial photographs. This information is unchecked



SCALE 1:24 000  
CONTOUR INTERVAL 10 FEET  
DOTTED LINES REPRESENT 5-FOOT CONTOURS  
NATIONAL GEODETIC VERTICAL DATUM OF 1929  
THIS MAP COMPLIES WITH NATIONAL MAP ACCURACY STANDARDS  
FOR SALE BY U.S. GEOLOGICAL SURVEY, RESTON, VIRGINIA 22092  
AND BY THE GEOLOGICAL SURVEY DIVISION  
MICHIGAN DEPARTMENT OF NATURAL RESOURCES, LANSING, MICHIGAN 48909  
A FOLDER DESCRIBING TOPOGRAPHIC MAPS AND SYMBOLS IS AVAILABLE ON REQUEST



ROAD CLASSIFICATION  
Primary highway, hard surface  
Secondary highway, hard surface  
Unimproved road  
Interstate Route  
U. S. Route  
State Route  
Light-duty road, hard or improved surface  
NOV - 5 1980  
USGS Historical File  
Topographic Division  
RAVENNA, MICH.  
NW/4 RAVENNA 15' QUADRANGLE  
N4307.5-W8552.5/7.5  
1980  
DNA 3870 III NW-SERIES V82

1950