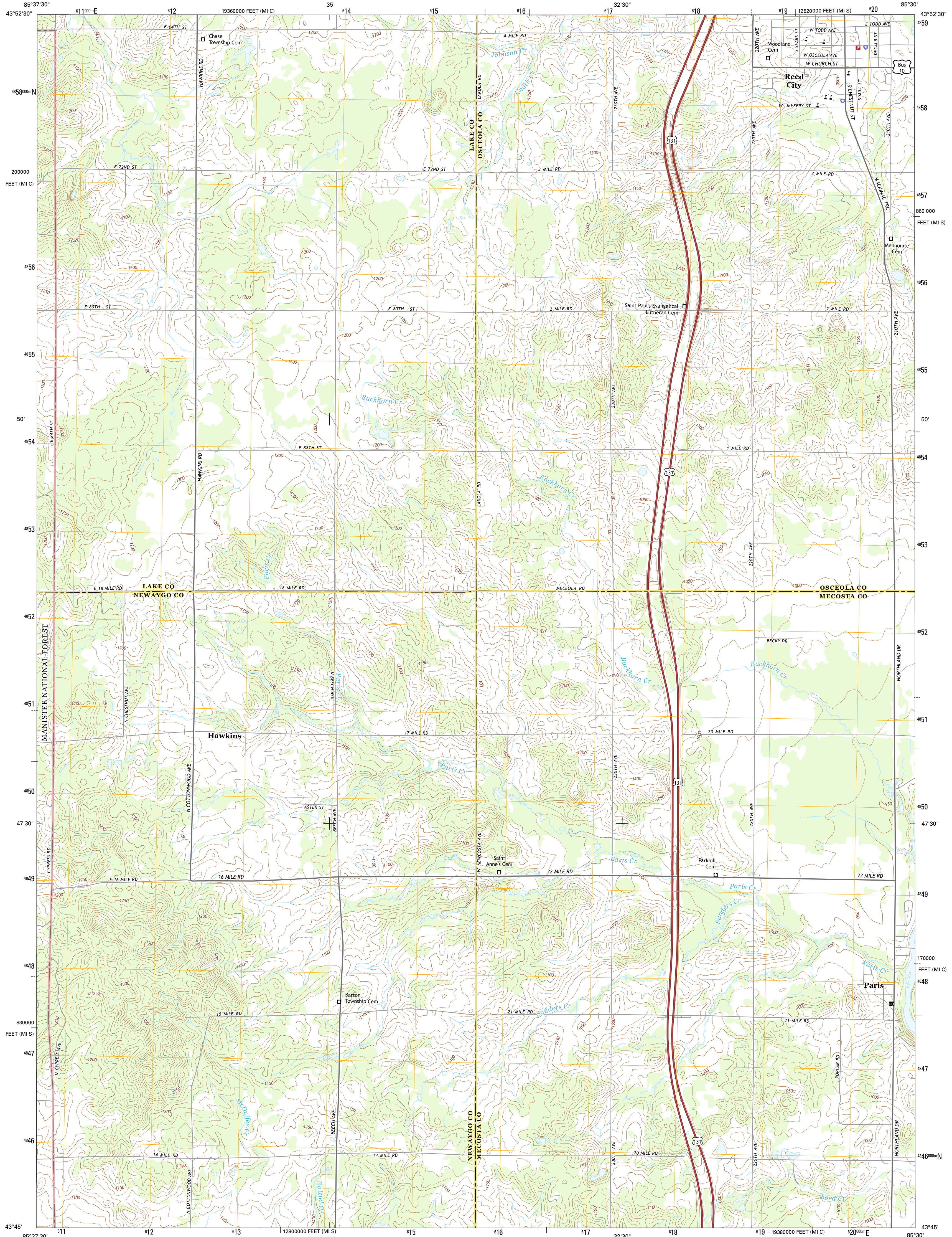




U.S. DEPARTMENT OF THE INTERIOR
U.S. GEOLOGICAL SURVEY



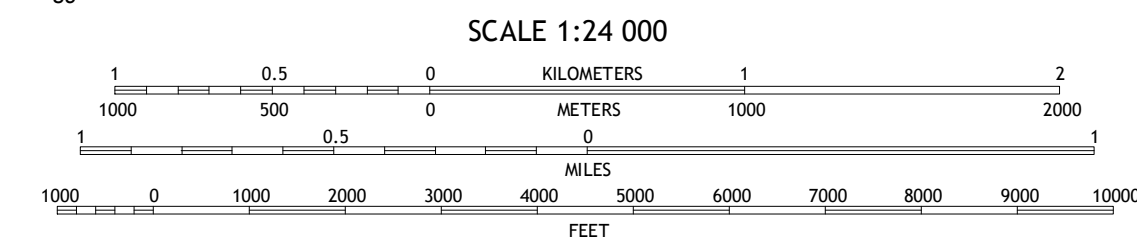
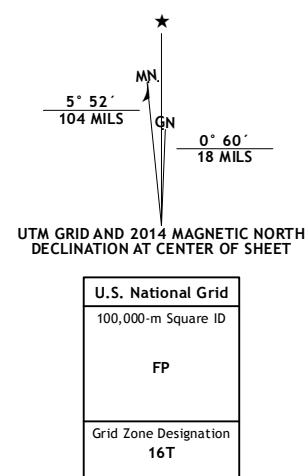
REED CITY SOUTH QUADRANGLE
MICHIGAN
7.5-MINUTE SERIES



Produced by the United States Geological Survey
North American Datum of 1983 (NAD83)
World Geodetic System of 1984 (WGS84), Projection and
1000-meter grid: Universal Transverse Mercator, Zone 16T
10 000-foot ticks: Michigan Coordinate System of 1983 (south
and central zones)

This map is not a legal document. Boundaries may be
generalized for this map scale. Private lands within government
reservations may not be shown. Obtain permission before
entering private lands.

Imagery: N.A.I.P., July 2012 - August 2012
Roads: HERE, ©2013
Roads within US Forest Service Lands: FS Topo Data
with limited Forest Service updates, 2013
Names: GNS, 2013
Hydrography: National Hydrography Dataset, 2012
Contours: National Elevation Dataset, 2006
Boundaries: Multiple sources; see metadata file 1972 - 2013
Public Land Survey System: BLM, 2011



ROAD CLASSIFICATION

Expressway	Local Connector
Secondary Hwy	Local Road
Ramp	4WD
Interstate Route	US Route
FS Primary Route	FS Passenger Route
	FS High
	Clearance Route
	State Route

Check with local Forest Service unit
for current travel conditions and restrictions.

1	2	3
4	5	6
7	8	

ADJOINING QUADRANGLES

- Chase
- Reed City North
- Slaybaugh Corner
- Whipple Lake
- Hersey
- Woodville
- Woodville NE
- Big Rapids

REED CITY SOUTH, MI
2014

