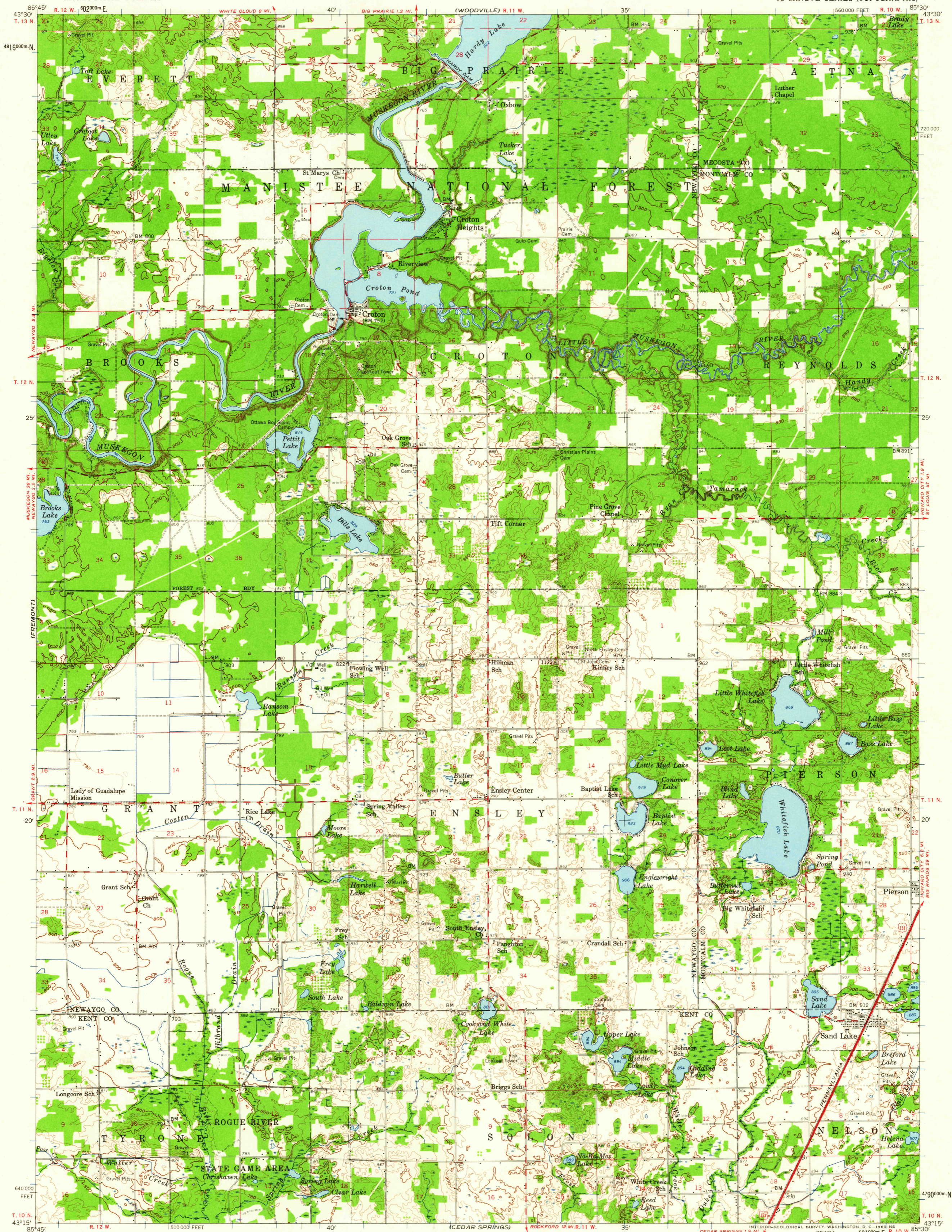
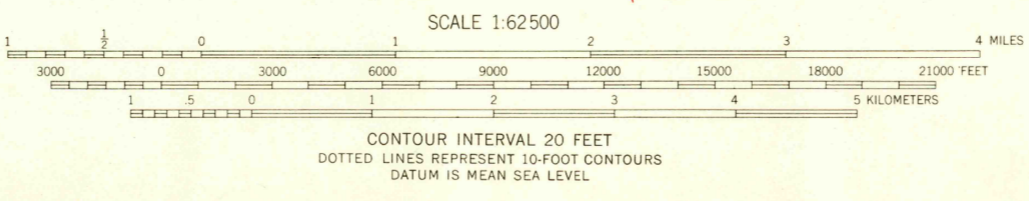


(BIG RAPIDS)

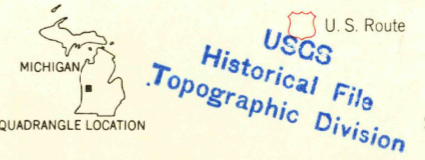


Mapped, edited, and published by the Geological Survey  
Control by USGS and USC&GS  
Topography from aerial photographs by photogrammetric methods  
Aerial photographs taken 1955. Field check 1958  
Polyconic projection. 1927 North American datum  
10,000-foot grid based on Michigan coordinate system, central zone  
1000-meter Universal Transverse Mercator grid ticks,  
zone 16, shown in blue



ROAD CLASSIFICATION

Heavy-duty	Light-duty
Medium-duty	Unimproved dirt
U. S. Route	State Route



SAND LAKE, MICH.  
N 4315-W 8530/15

1958

THIS MAP COMPLIES WITH NATIONAL MAP ACCURACY STANDARDS  
FOR SALE BY U. S. GEOLOGICAL SURVEY, WASHINGTON 25, D. C.  
A FOLDER DESCRIBING TOPOGRAPHIC MAPS AND SYMBOLS IS AVAILABLE ON REQUEST

USGS  
FILE COPY

JAN 12 1960

2470