

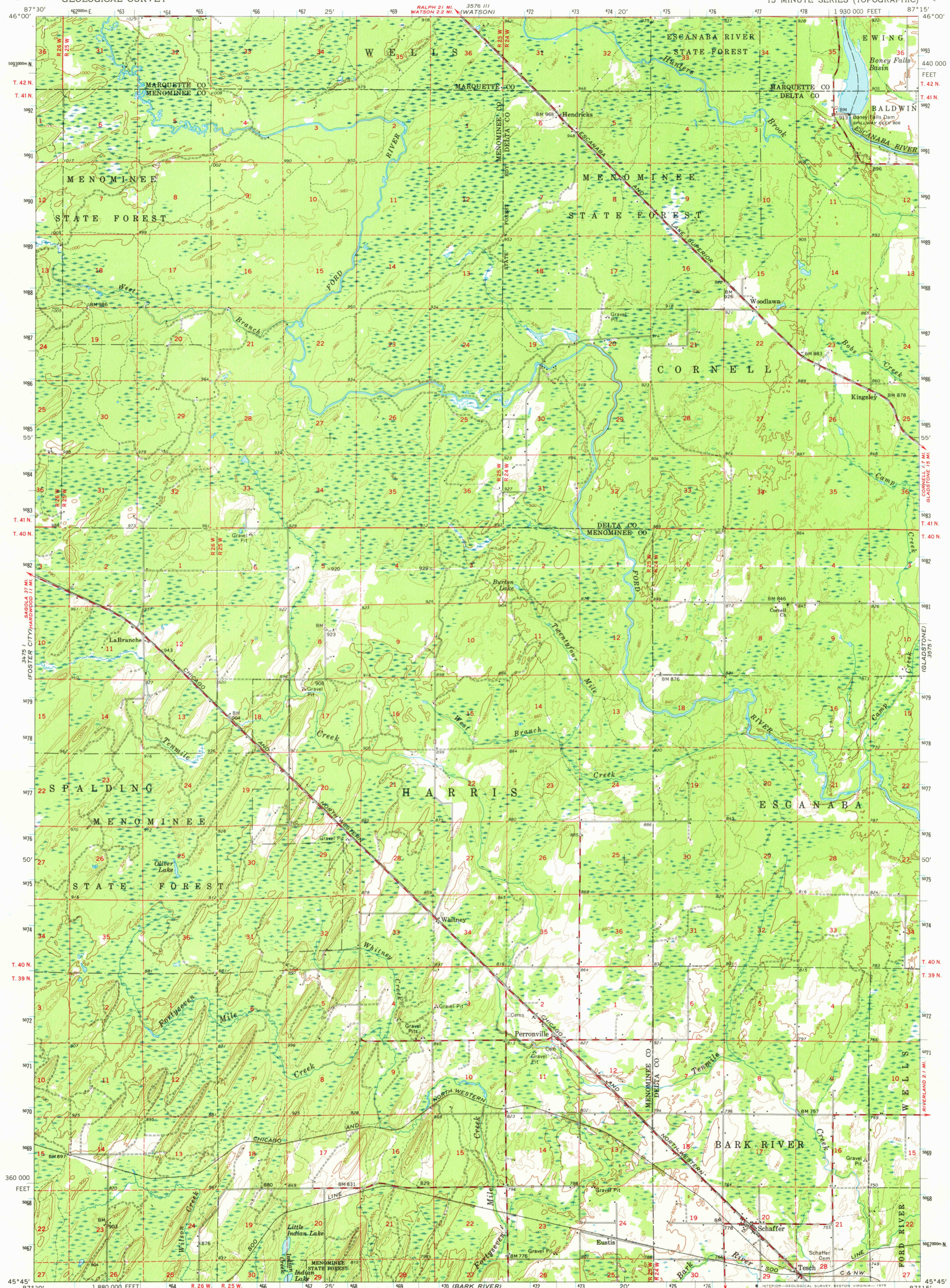
3426 11
NORTHLAND

UNITED STATES
DEPARTMENT OF THE INTERIOR
GEOLOGICAL SURVEY

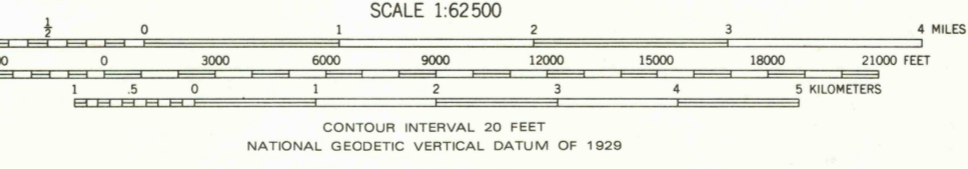
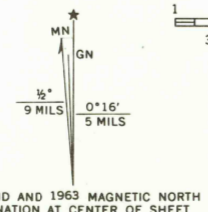


SCHAFFER QUADRANGLE
MICHIGAN
15 MINUTE SERIES (TOPOGRAPHIC)

3576 11
ROCK



Mapped, edited, and published by the Geological Survey
Control by USGS and USC&GS
Topography by photogrammetric methods from aerial
photographs taken 1954. Field checked 1963
Polyconic projection. 1927 North American datum
10,000-foot grids based on Michigan coordinate system,
north zone
1000-meter Universal Transverse Mercator grid ticks,
zone 16, shown in blue
There may be private inholdings within the boundaries of
the National or State reservations shown on this map



THIS MAP COMPLIES WITH NATIONAL MAP ACCURACY STANDARDS
FOR SALE BY U.S. GEOLOGICAL SURVEY, RESTON, VIRGINIA 22092
AND BY THE GEOLOGICAL SURVEY DIVISION
MICHIGAN DEPARTMENT OF NATURAL RESOURCES, LANSING, MICHIGAN 48909
A FOLDER DESCRIBING TOPOGRAPHIC MAPS AND SYMBOLS IS AVAILABLE ON REQUEST

USGS
Historical File
Topographic Division

SCHAFFER, MICH.
N4545-W8715/15
1963
AMS 3575 IV-SERIES V782

FEB 19 1980

2250