

VERMILION
1.9 MI.

WHITEFISH POINT
2.5 MI.

85°07'30"

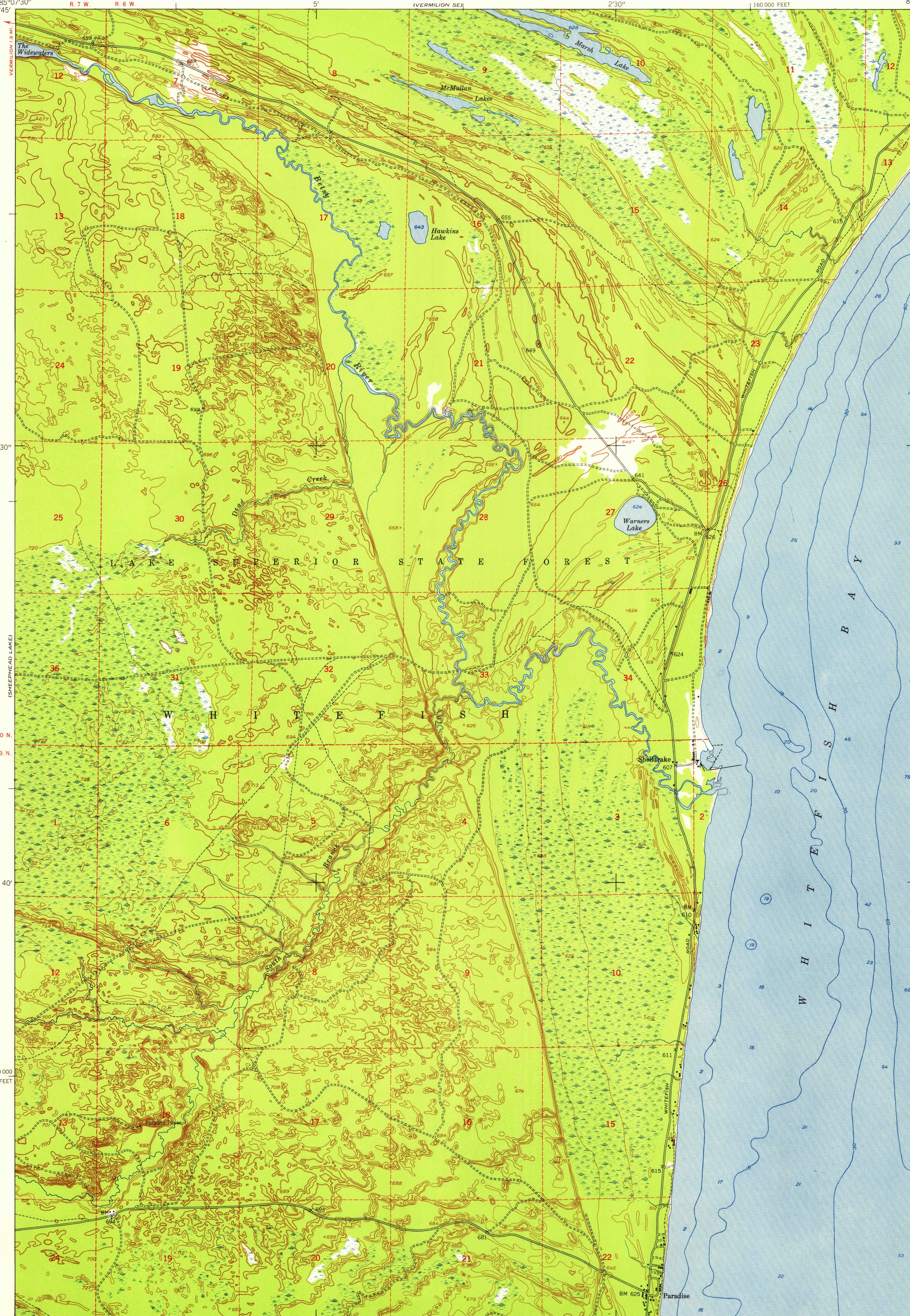
46°45'

42°30'

40'

46°37'30"

85°07'30"



1 880 000 FEET

T. 50 N.

T. 49 N.

140 000 FEET

R. 7 W.

R. 6 W.

EMERSON

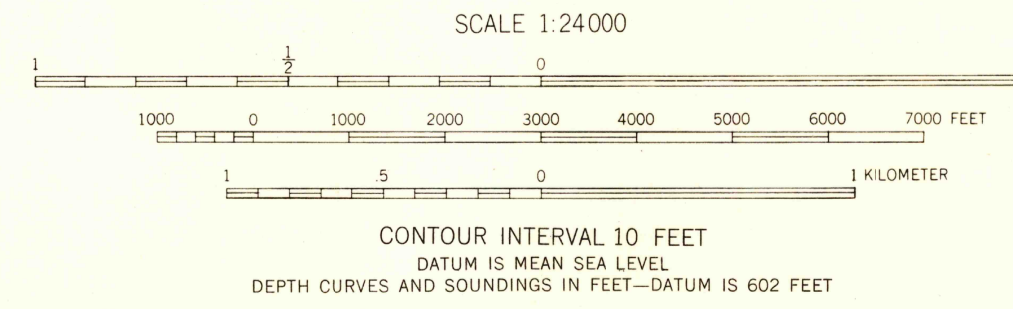
EMERSON 4.9 MI.

INTERIOR—GEOLOGICAL SURVEY, WASHINGTON, D. C.—1955

M. R. 7576

Maped by the Army Map Service
Published for civil use by the Geological Survey
Control by USC&GS, USCE, USLS, and IBC
Topography by photogrammetric methods
Aerial photographs taken 1950. Field check 1951
Coastal hydrography by U. S. Lake Survey
Polyconic projection. 1927 North American datum
10,000-foot grid based on Michigan coordinate system,
east zone
Unchecked elevations are shown in brown
Dashed land lines indicate approximate locations

4"
TRUE NORTH
MAGNETIC NORTH
APPROXIMATE MEAN
DECLINATION, 1951



ROAD CLASSIFICATION

Heavy-duty	2 LANE 16 LANE	Light duty
Medium-duty	4 LANE 16 LANE	Unimproved dirt
U. S. Route		State Route

SHELLDRAKE, MICH.
N 4637.5—W 8500/7.5

1951

THIS MAP COMPLIES WITH NATIONAL MAP ACCURACY STANDARDS
FOR SALE BY U. S. GEOLOGICAL SURVEY, WASHINGTON 25, D. C.
A FOLDER DESCRIBING TOPOGRAPHIC MAPS AND SYMBOLS IS AVAILABLE ON REQUEST

U.S.G.S.
FILE COPY
TOPOGRAPHIC DIVISION

U.S.G.S.
FILE COPY
TOPOGRAPHIC DIVISION

JUL 15 1955

2555