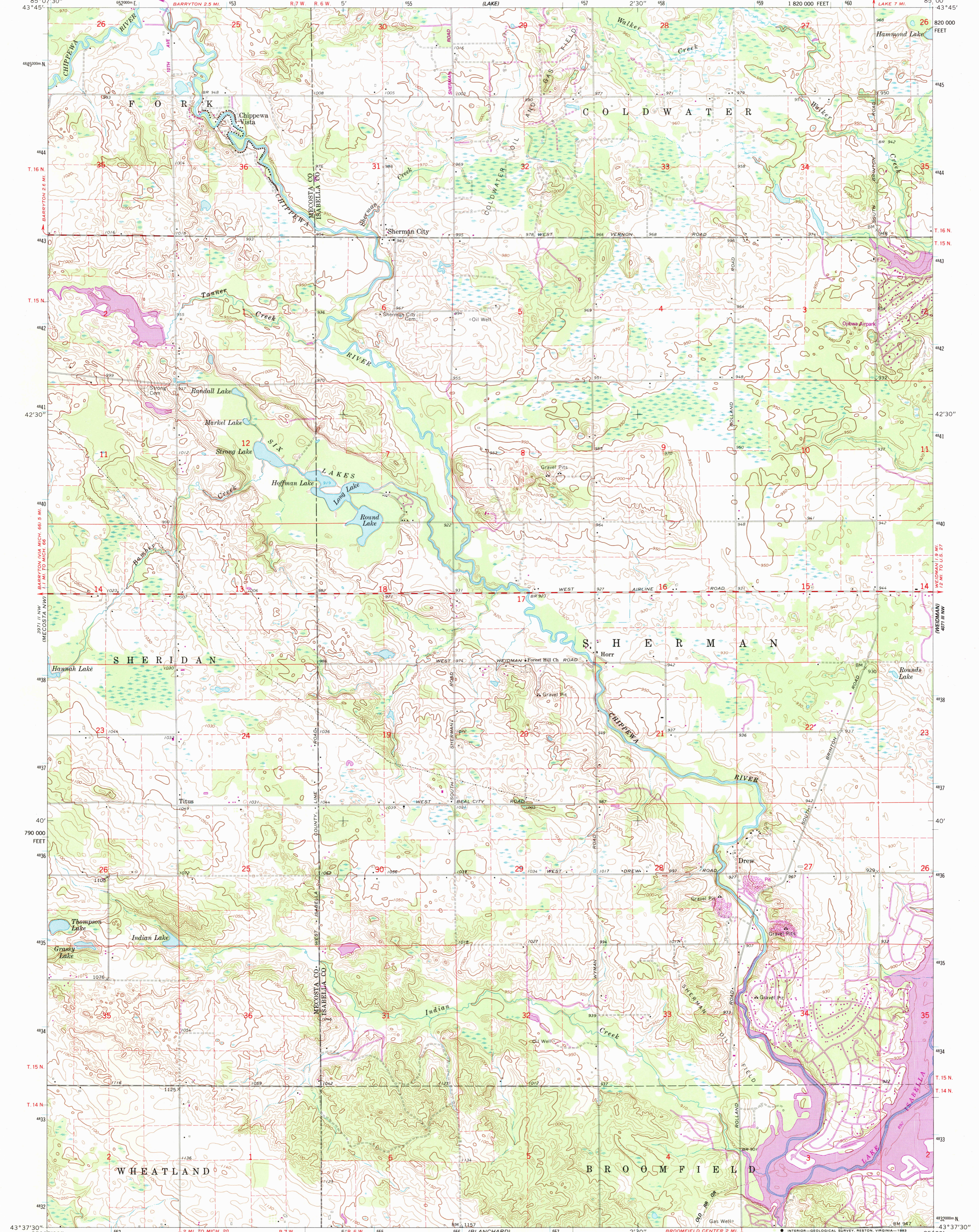


3971 11 NW
(MERCATOR LAKES)

3971 11 SW
(WOODS)



Mapped, edited, and published by the Geological Survey

Control by USGS and USC&GS

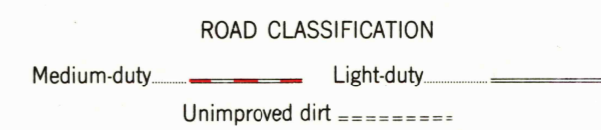
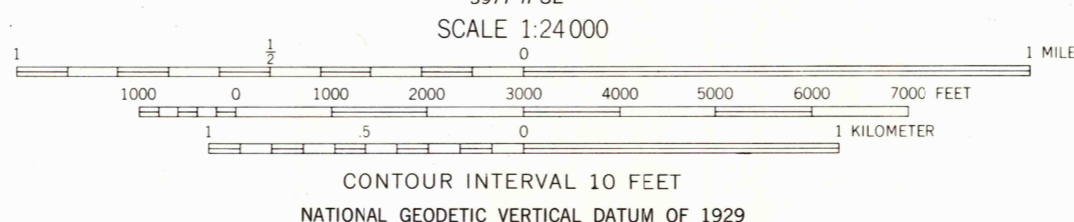
Topography by photogrammetric methods from aerial photographs taken 1963. Field checked 1964

Polyconic projection. 1927 North American datum. 10,000-foot grid based on Michigan coordinate system, south zone. 1000-meter Universal Transverse Mercator grid ticks, zone 16, shown in blue.

Fine red dashed lines indicate selected fence and field lines where generally visible on aerial photographs. This information is un-checked.

To place on the predicted North American Datum 1983 move the projection lines 1 meter north as shown by dashed corner ticks.

Revisions shown in purple compiled from aerial photographs taken 1981 and other sources. This information not field checked. Map edited 1983



THIS MAP COMPLIES WITH NATIONAL MAP ACCURACY STANDARDS
FOR SALE BY U. S. GEOLOGICAL SURVEY, RESTON, VIRGINIA 22092
AND BY THE GEOLOGICAL SURVEY DIVISION
MICHIGAN DEPARTMENT OF NATURAL RESOURCES, LANSING, MICHIGAN 48909
A FOLDER DESCRIBING TOPOGRAPHIC MAPS AND SYMBOLS IS AVAILABLE ON REQUEST



SHERMAN CITY, MICH.
N4337.5—W8500/7.5

1964
PHOTOREVISED 1982
DMA 3971 11 NE—SERIES V962

RETURN TO:
USGS NHD HISTORICAL MAP ARCHIVES

3971 11 NW
(MECOSTA)

3971 11 SW
(WOODS)