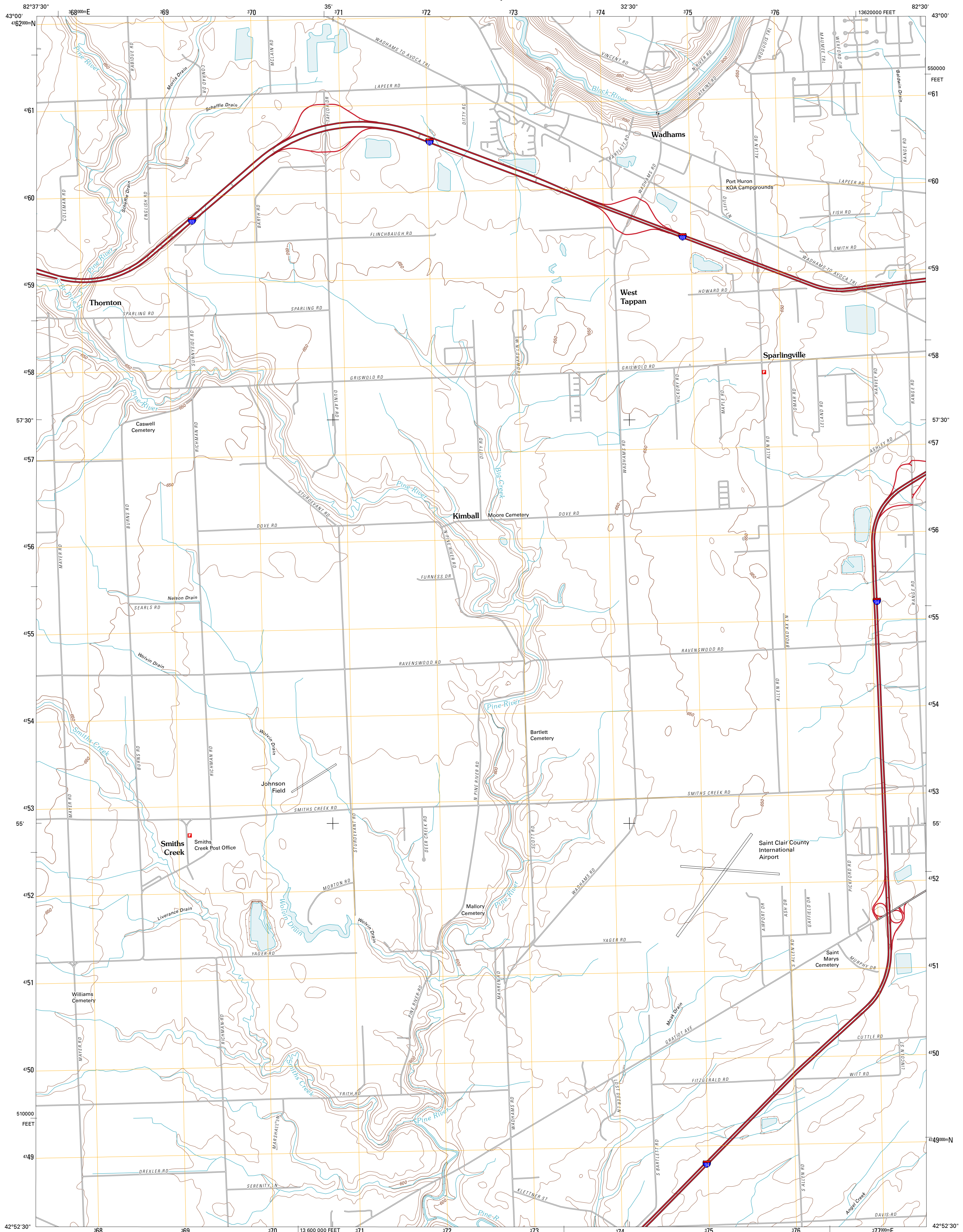




U.S. DEPARTMENT OF THE INTERIOR
U. S. GEOLOGICAL SURVEY

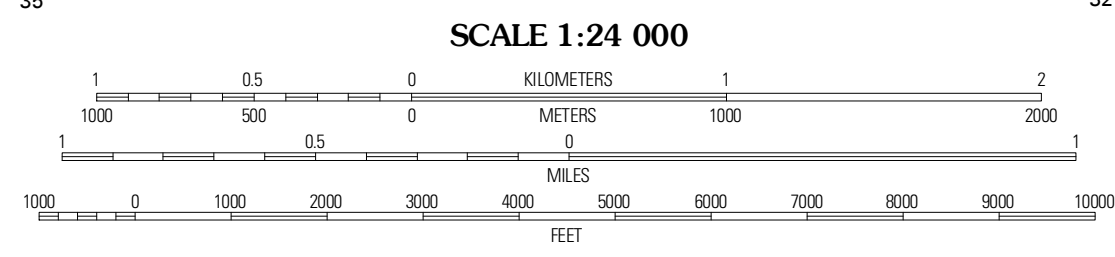
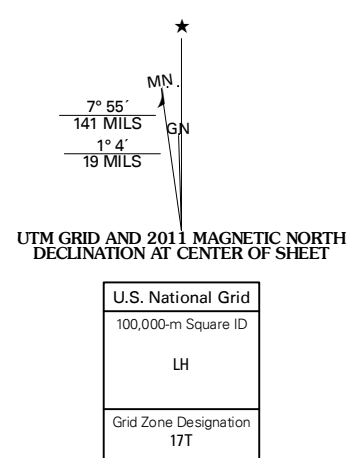


SMITHS CREEK QUADRANGLE
MICHIGAN-ST. CLAIR CO.
7.5-MINUTE SERIES



Produced by the United States Geological Survey
North American Datum of 1983 (NAD83)
World Geodetic System of 1984 (WGS84). Projection and
1 000 meter grid: Universal Transverse Mercator, Zone 17T
10 000-foot ticks: Michigan Coordinate System of 1983
(south zone)

Imagery: NIP, August 2009
Roads: ©2006-2010 Tele Atlas
Names: CNIS, 2010
Hydrography: National Hydrography Dataset, 2009
Contours: National Elevation Dataset, 1999
Boundaries: Census, IBWC, IBC, USGS, 1972 - 2010



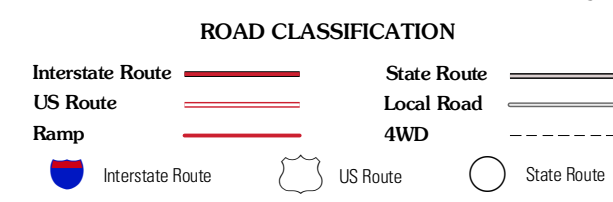
CONTOUR INTERVAL 10 FEET
NORTH AMERICAN VERTICAL DATUM OF 1988

This map was produced to conform with version 0.5.10
of the USGS US Topo Product Standard.
A metadata file associated with this product is draft version 0.5.16



Avoca	Ruby	Lakeport
Goodells	Smiths Creek	Port Huron
Adair	Battle Run	St. Clair

ADJOINING 7.5 QUADRANGLES



SMITHS CREEK, MI
2011