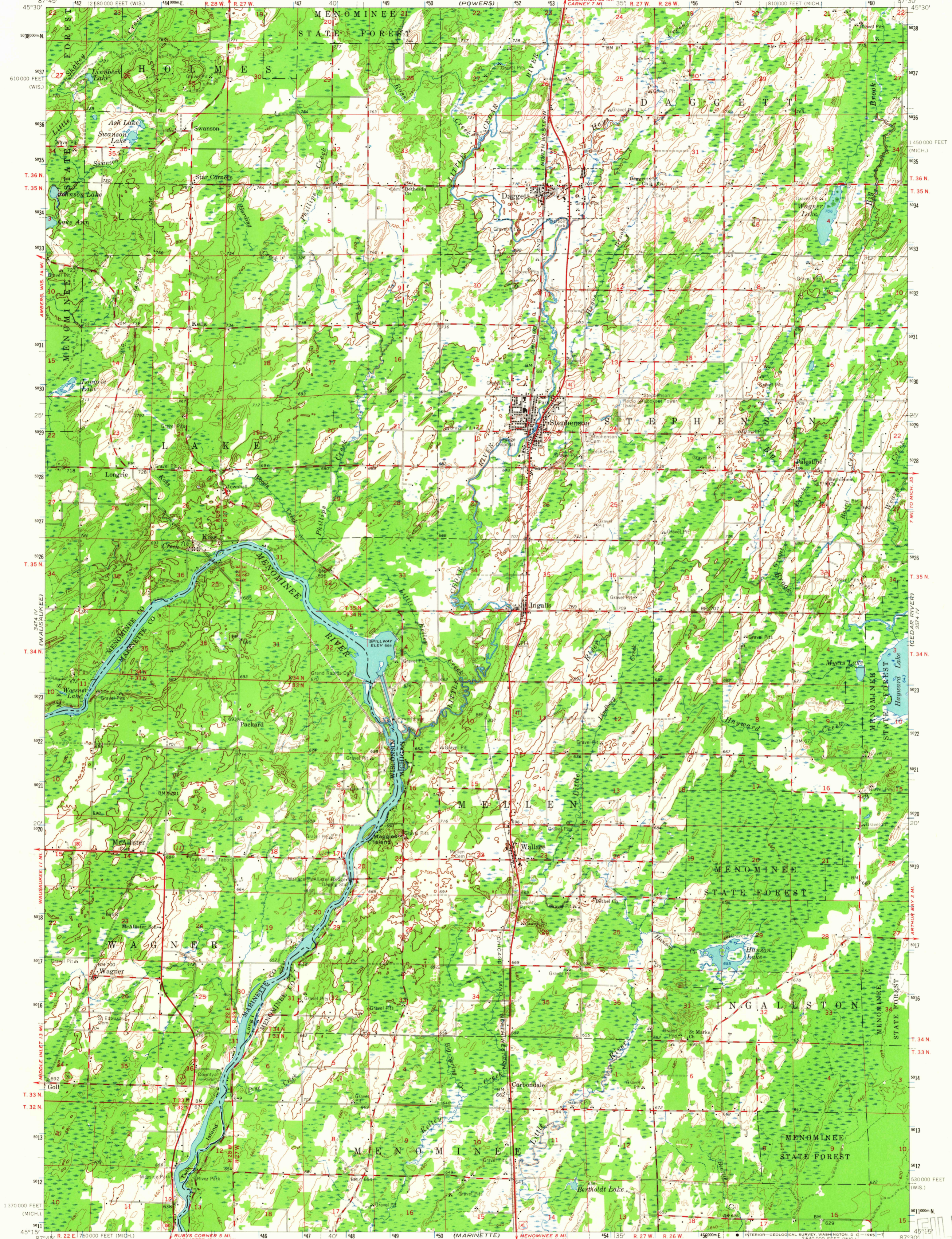
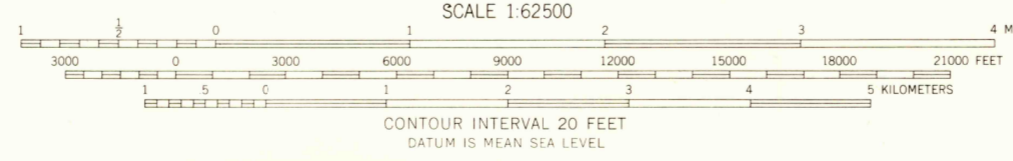


3474 I
10-25-61

3578 II
10-25-61
(BARAK RIVER)



Mapped, edited, and published by the Geological Survey
Control by USGS and USC&GS
Topography by photogrammetric methods from aerial
photographs taken 1954. Field checked 1963.
Polyconic projection. 1927 North American datum
10,000-foot grids based on Michigan coordinate system, west zone,
and Wisconsin coordinate system, central zone
1000-meter Universal Transverse Mercator grid ticks,
zone 16, shown in blue



USGS
Historical Topographic Division

ROAD CLASSIFICATION	
Heavy-duty	Light-duty
Medium-duty	Unimproved dirt
U.S. Route	State Route

U.S.G.S.
FILE COPY
TOPOGRAPHIC DIVISION

3195

FEB 9 1965

STEPHENSON, MICH.-WIS.
N4515-W8730/15
1963

AMS 3474 I-SERIES V762

THIS MAP COMPLIES WITH NATIONAL MAP ACCURACY STANDARDS
FOR SALE BY U. S. GEOLOGICAL SURVEY, WASHINGTON 25, D. C.
A FOLDER DESCRIBING TOPOGRAPHIC MAPS AND SYMBOLS IS AVAILABLE ON REQUEST