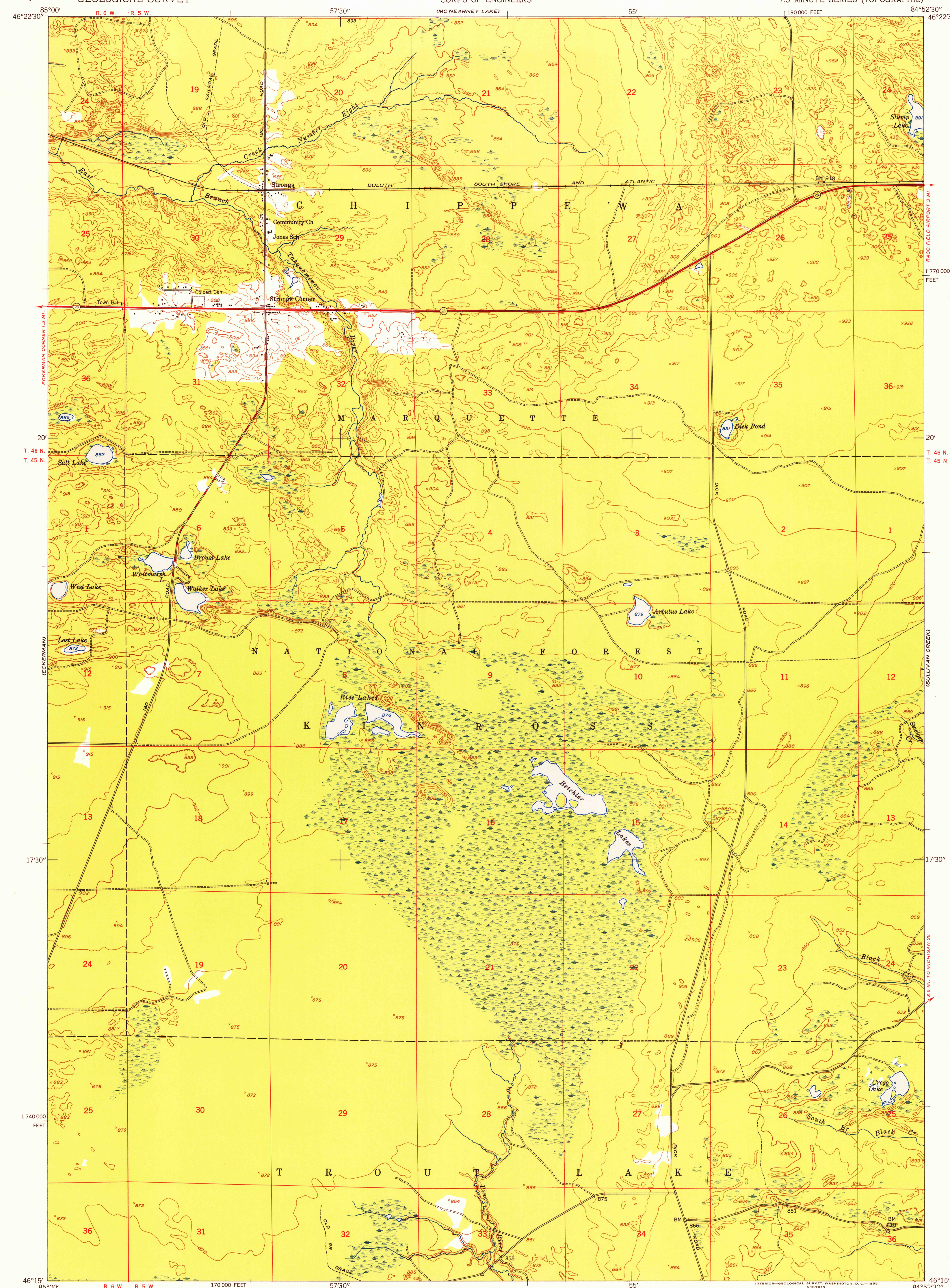


GRATT LAKE

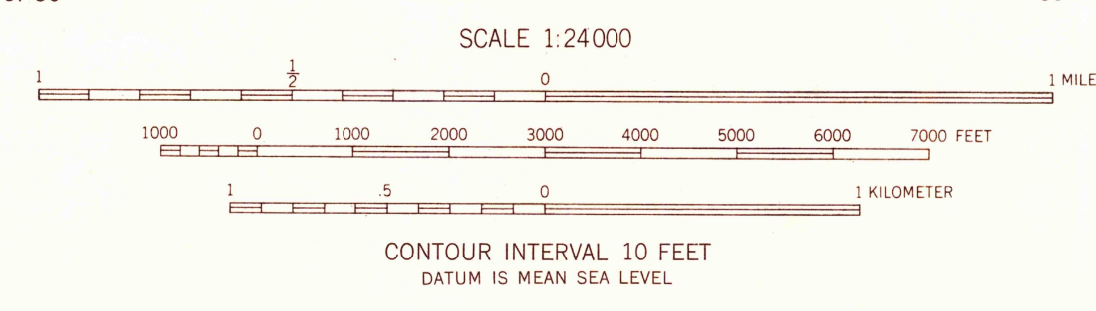
IPENOLLS LAKE



U.S.G.S.
FILE COPY
TOPOGRAPHIC DIVISION

Maped by the Army Map Service
Published for civil use by the Geological Survey
Control by USC&GS, USCE, USLS, and IBC
Topography by photogrammetric methods
Aerial photographs taken 1950. Field check 1951
Polyconic projection. 1927 North American datum
10,000-foot grid based on Michigan coordinate system,
east zone
Unchecked elevations are shown in brown

35°
TRUE NORTH
MAGNETIC NORTH
APPROXIMATE MEAN
DECLINATION, 1951



ROAD CLASSIFICATION
Heavy-duty 4 LANE 16 LANE Light-duty
Medium-duty 4 LANE 16 LANE Unimproved dirt
U. S. Route State Route



USGS
Historical File
Topographic Division

STRONGS, MICH.
N4615—W8452.5/7.5

U.S.G.S.
FILE COPY
TOPOGRAPHIC DIVISION

THIS MAP COMPLIES WITH NATIONAL MAP ACCURACY STANDARDS
FOR SALE BY U. S. GEOLOGICAL SURVEY, WASHINGTON 25, D. C.
A FOLDER DESCRIBING TOPOGRAPHIC MAPS AND SYMBOLS IS AVAILABLE ON REQUEST

1951