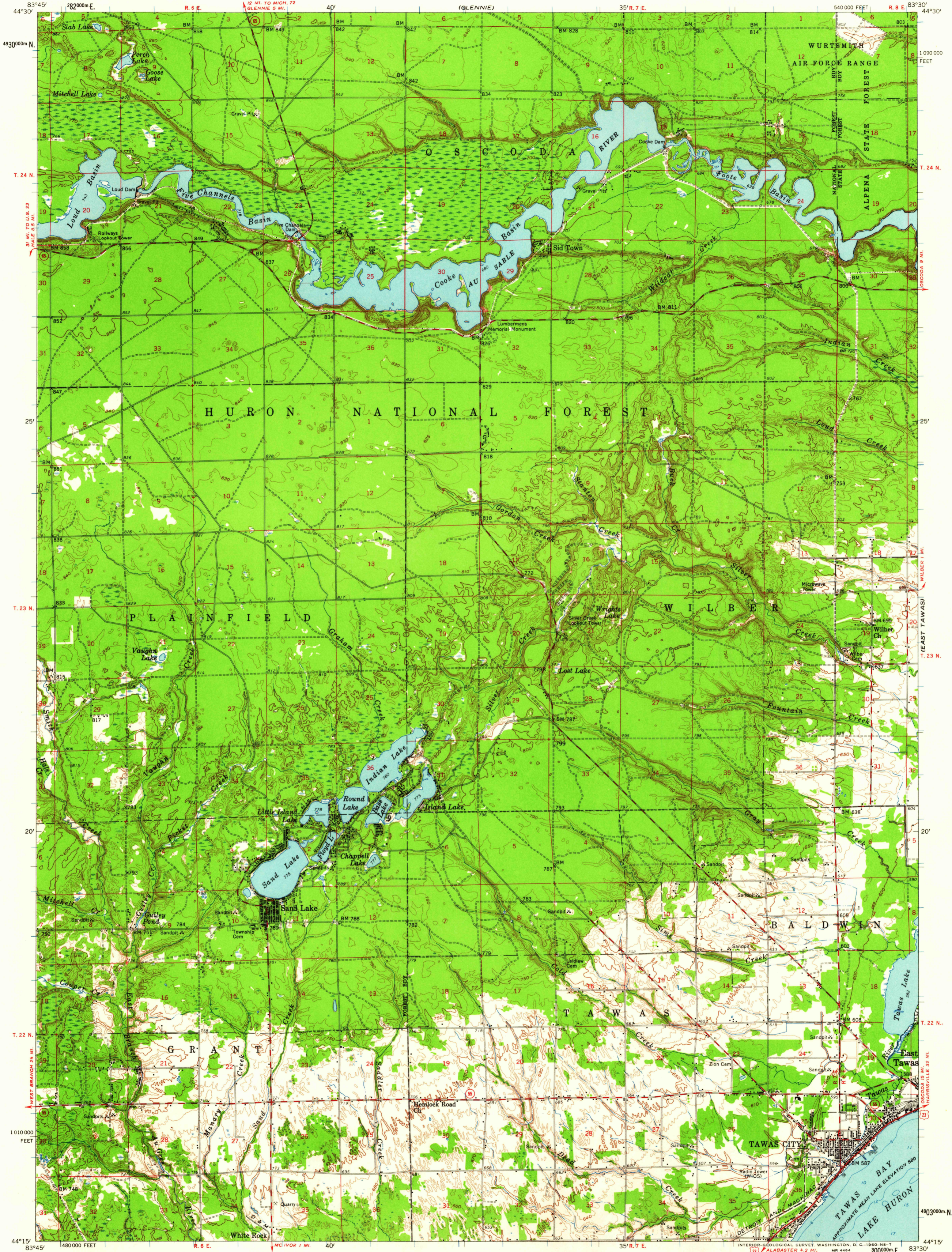
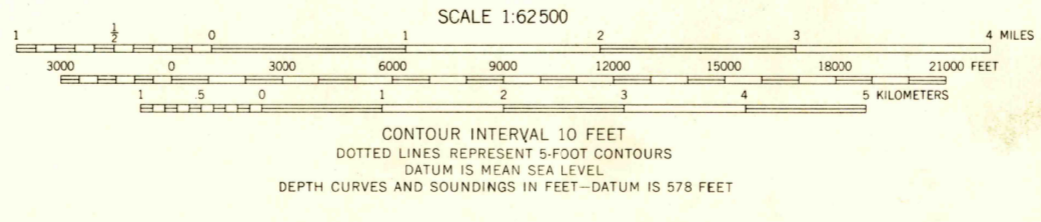


(HARRISVILLE)



Mapped, edited, and published by the Geological Survey
Control by USGS and USC&GS
Topography from aerial photographs by photogrammetric methods
Aerial photographs taken 1958. Field check 1959
Hydrography compiled from U. S. Lake Survey chart 52 (1958)
Polyconic projection. 1927 North American datum
10,000-foot grid based on Michigan coordinate system, east zone
1000-meter Universal Transverse Mercator grid ticks,
zone 17, shown in blue



ROAD CLASSIFICATION

Heavy-duty	Light-duty
Medium-duty	Unimproved dirt
U.S. Route	State Route



USGS
Historical File
Topographic Division
TAWAS CITY, MICH.
N4415-W8330/15
1959

THIS MAP COMPLIES WITH NATIONAL MAP ACCURACY STANDARDS
FOR SALE BY U. S. GEOLOGICAL SURVEY, WASHINGTON 25, D. C.
A FOLDER DESCRIBING TOPOGRAPHIC MAPS AND SYMBOLS IS AVAILABLE ON REQUEST

U.S.G.S.
LE COPY
TOPOGRAPHIC DIVISION

DEC 27 1980