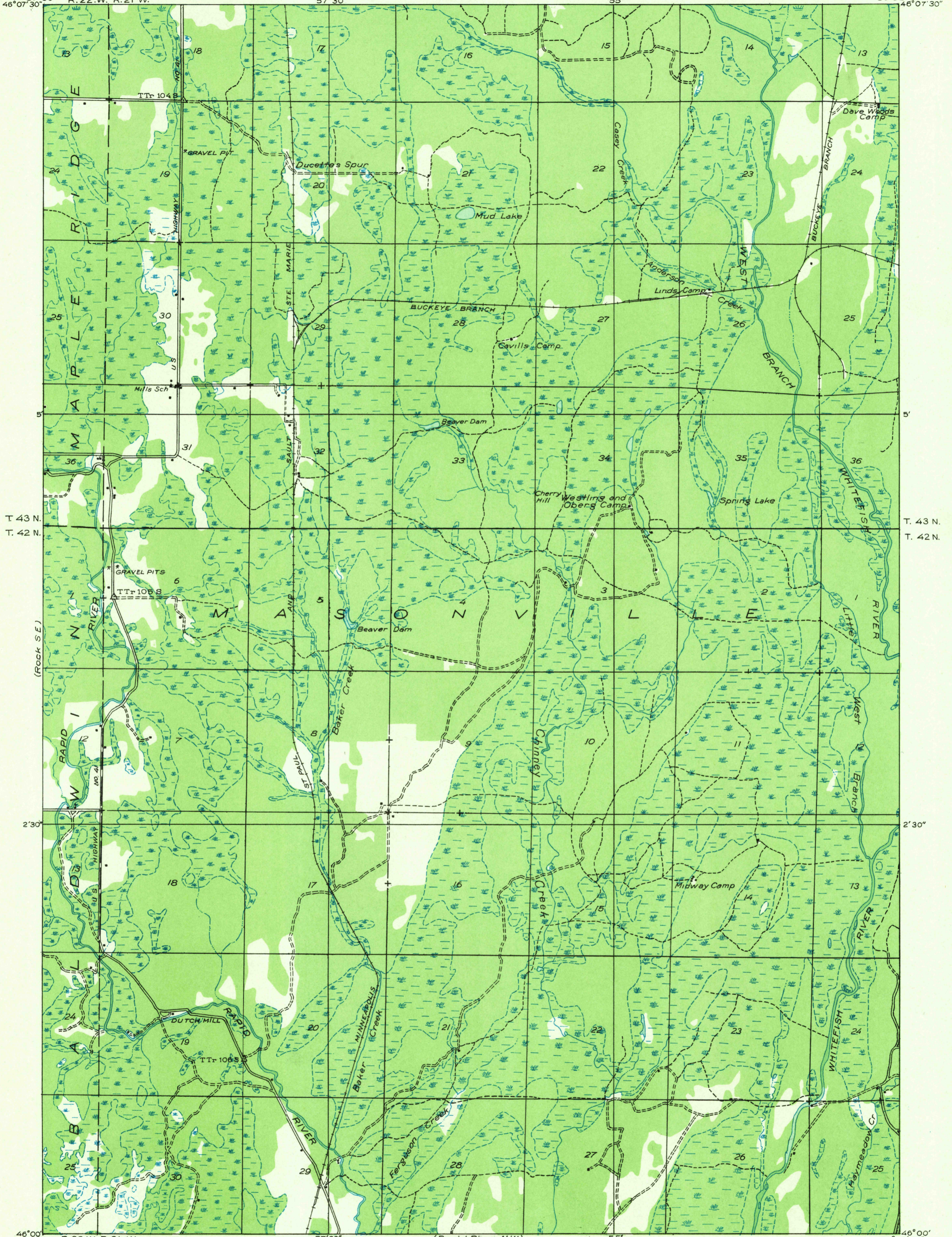
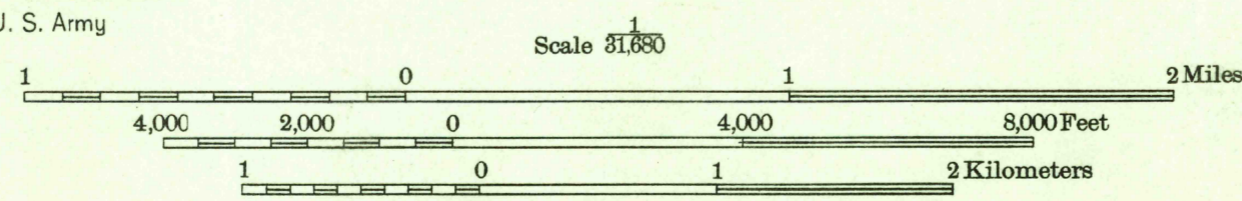


Advance sheet.
Subject to correction.

87°00' 86°52'30" R. 22 W. R. 21 W. 57'30" 55' 46°07'30" 46°07'30"



Glenn S. Smith, Division Engineer
Compiled by U. S. Geological Survey after field examination
of aerial photographs taken by Air Corps, U. S. Army
Control by U. S. Geological Survey
Field examination in 1932



Polyconic projection. North American datum
USGS
Historical File
Topographic Division
TRUE NORTH
MAGNETIC NORTH
APPROXIMATE MEAN
DECLINATION, 1932
TRENARY, MICH.
(S W)

(Rock N.E.)

(Rock S.E.)

(Brampton N.E.)

(Rapid River N.W.)

(Rapid River N.E.)