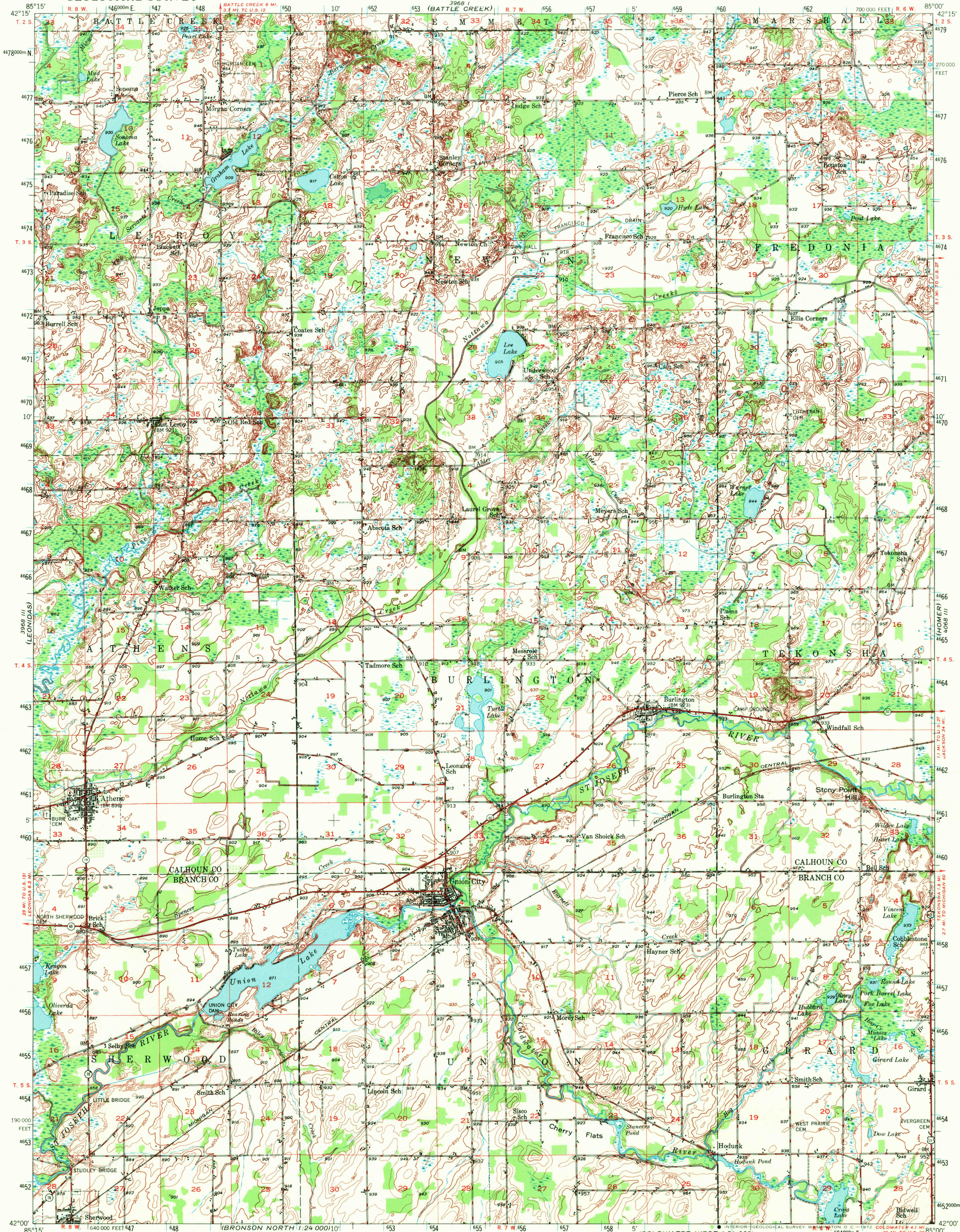


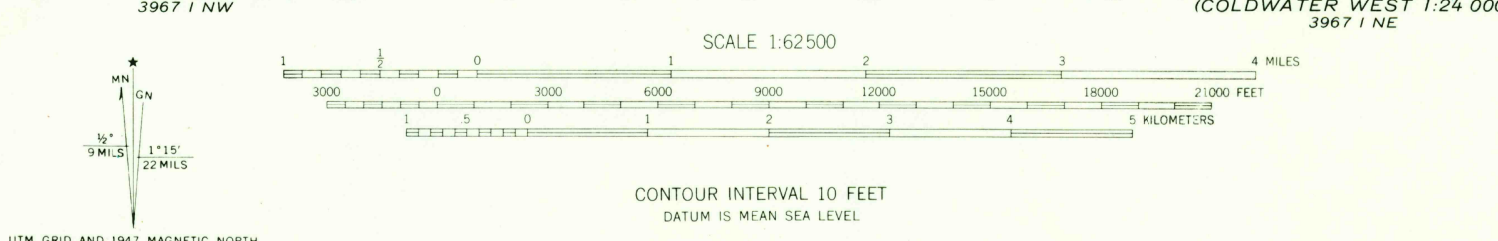
UNITED STATES
DEPARTMENT OF THE INTERIOR
GEOLOGICAL SURVEY

UNITED STATES
DEPARTMENT OF THE ARMY
CORPS OF ENGINEERS

UNION CITY QUADRANGLE
MICHIGAN
15 MINUTE SERIES (TOPOGRAPHIC)



Mapped, edited, and published by the Geological Survey
Control by USGS and USC&GS
Culture and drainage from aerial photographs taken 1946
Topography by plane-table methods 1947 Field check 1947
Polyconic projection, 1927 North American datum
10,000-foot grid based on Michigan coordinate system,
central zone
1000-meter Universal Transverse Mercator grid ticks,
zone 16, shown in blue



ROAD CLASSIFICATION
HARD-SURFACE ALL WEATHER ROADS DRY WEATHER ROADS
Heavy-duty LANE 16 LANE Improved dirt
Medium-duty LANE 16 LANE Unimproved dirt
Loose-surface, graded, or narrow hard-surface
U. S. Route State Route

THIS MAP COMPLIES WITH NATIONAL MAP ACCURACY STANDARDS
FOR SALE BY U. S. GEOLOGICAL SURVEY, WASHINGTON, D. C. 20242
A FOLDER DESCRIBING TOPOGRAPHIC MAPS AND SYMBOLS IS AVAILABLE ON REQUEST

UNION CITY, MICH.
N4200-W8500/15
1947
AMS 3968 II-SERIES V762

HISTORICAL FILE
TOPOGRAPHIC DIVISION

AUG 8 1972

1165