

(GALESBURG)

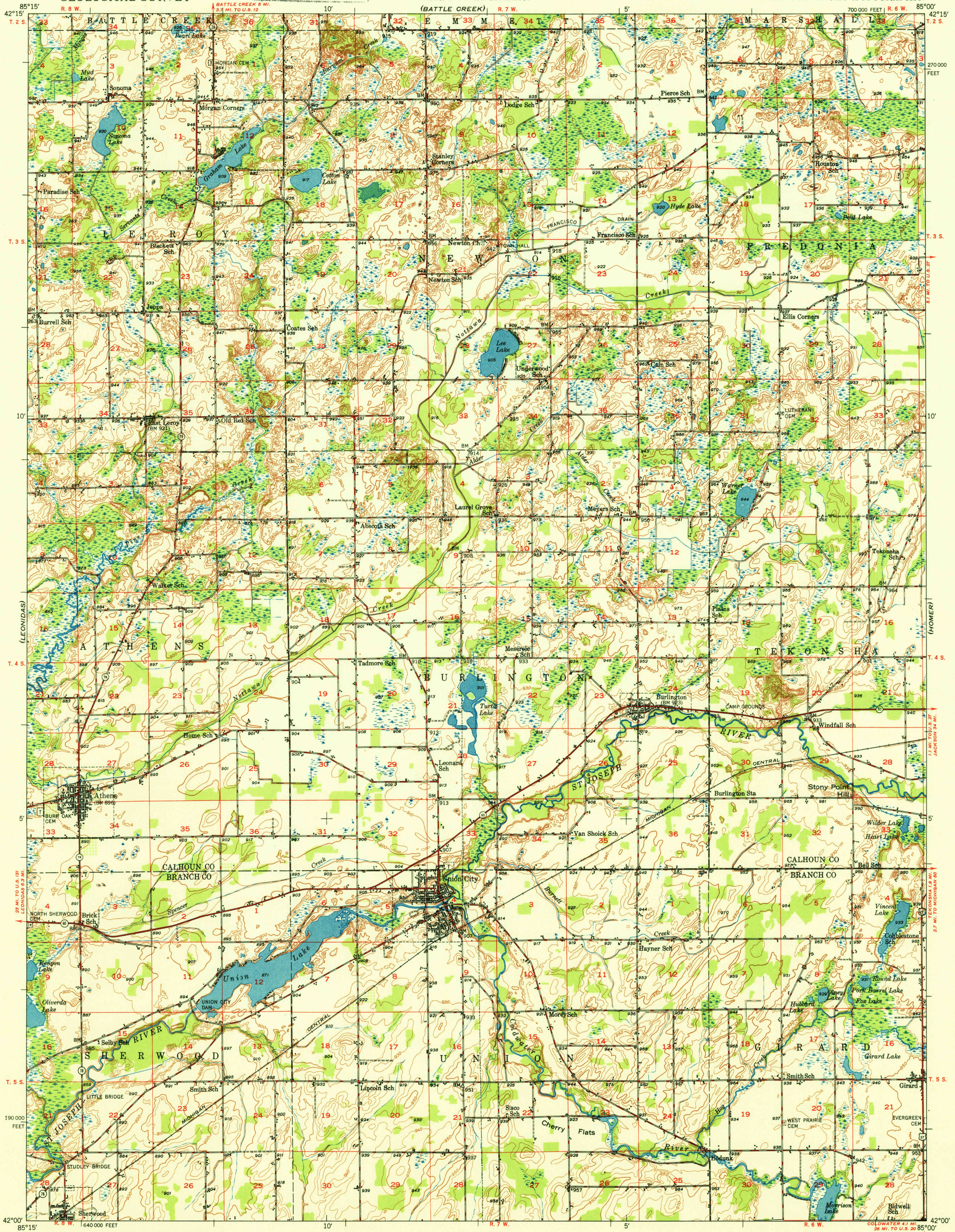
UNITED STATES DEPARTMENT OF THE INTERIOR GEOLOGICAL SURVEY

U.S.G.S. FILE COPY Inspection and Editing.

UNITED STATES DEPARTMENT OF THE ARMY CORPS OF ENGINEERS (BATTLE CREEK)

UNION CITY QUADRANGLE MICHIGAN 15 MINUTE SERIES (TOPOGRAPHIC)

(MARSHALL)

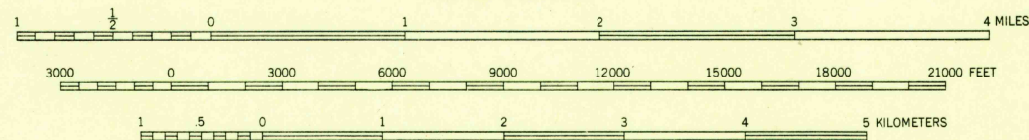


Mapped, edited, and published by the Geological Survey Control by USGS and USC&GS

Culture and drainage from aerial photographs taken 1946 Topography by plane-table methods 1947 Field check 1947

Polyconic projection. 1927 North American datum 10,000-foot grid based on Michigan coordinate system, central zone

TRUE NORTH
MAGNETIC NORTH
APPROXIMATE MEAN DECLINATION, 1947



CONTOUR INTERVAL 10 FEET DATUM IS MEAN SEA LEVEL

THIS MAP COMPLIES WITH NATIONAL MAP ACCURACY STANDARDS FOR SALE BY U. S. GEOLOGICAL SURVEY, WASHINGTON 25, D. C. A FOLDER DESCRIBING TOPOGRAPHIC MAPS AND SYMBOLS IS AVAILABLE ON REQUEST.

ROAD CLASSIFICATION
HARD-SURFACE ALL WEATHER ROADS DRY WEATHER ROADS
Heavy-duty... **LANE IS LANE** Improved dirt...
Medium-duty... **LANE IS LANE** Unimproved dirt...
Loose-surface, graded, or narrow hard-surface...
U. S. Route State Route

USGS
Historical File
Topographic Division
FILE COPY
Inspection and Editing

UNION CITY, MICH.
N4200-W8500/15

EDITION OF 1950

OCT 20 1950 2115