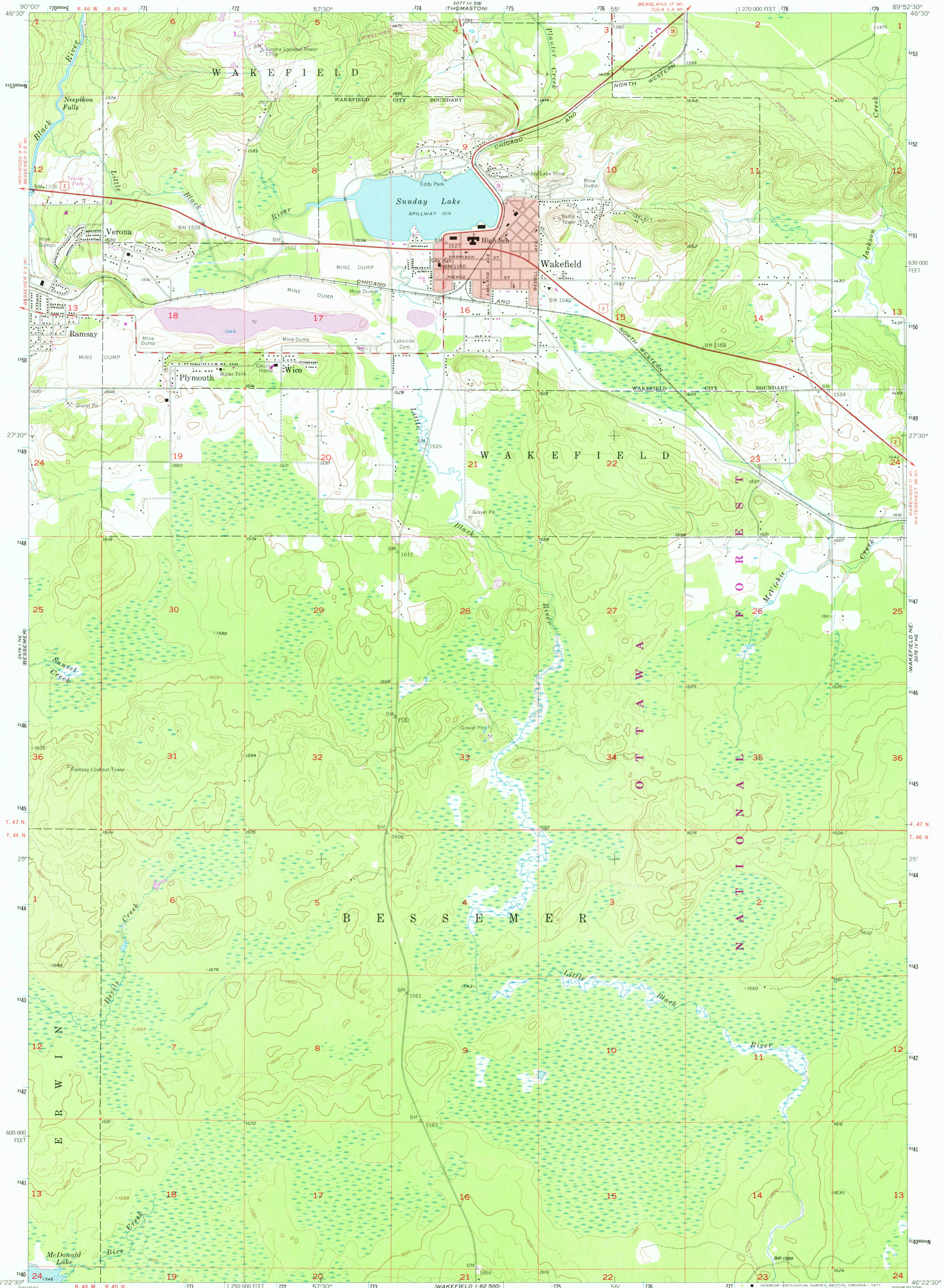
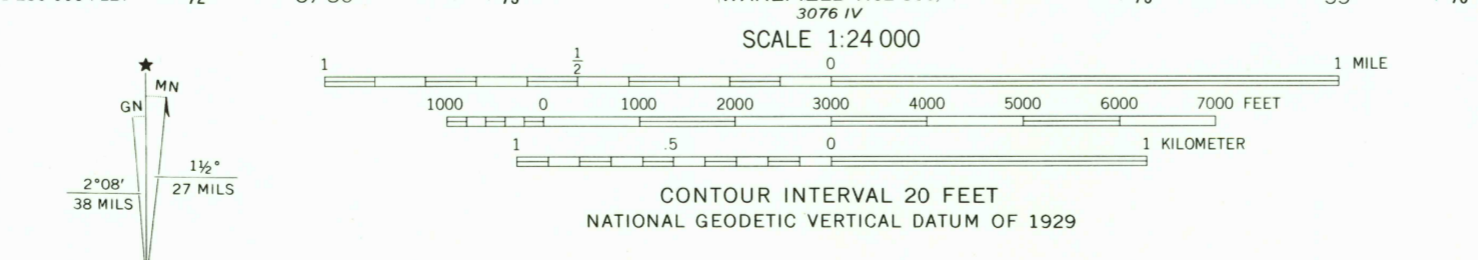


UNITED STATES
DEPARTMENT OF THE INTERIOR
GEOLOGICAL SURVEY

WAKEFIELD QUADRANGLE
MICHIGAN—GOGEBIC CO.
7.5 MINUTE SERIES (TOPOGRAPHIC)
NW/4 WAKEFIELD 15' QUADRANGLE



Maped, edited, and published by the Geological Survey
Control by USGS and USC&GS
Topography from aerial photographs by Kelsh plotter
Aerial photographs taken 1951. Field check 1955
Polyconic projection. 1927 North American datum,
10,000-foot grid based on Michigan coordinate system,
north zone
Red tint indicates area in which only
landmark buildings are shown
Unchecked elevations are shown in brown
1000-meter Universal Transverse Mercator grid ticks,
zone 16, shown in blue
Revisions shown in purple compiled from aerial photographs
taken 1975. This information not field checked



ROAD CLASSIFICATION

- Heavy-duty
- Light-duty
- Medium-duty
- Unimproved dirt
- U.S. Route
- Slate Route

USGS
Historical File
Topographic Division

WAKEFIELD, MICH.
NW/4 WAKEFIELD 15' QUADRANGLE
N 4622.5—W 8952.5/7.5

1955
PHOTOREVISED 1975
AMS 3076 IV NW-SERIES V362

SEP 26 1977
2700

THIS MAP COMPLIES WITH NATIONAL MAP ACCURACY STANDARDS
FOR SALE BY U. S. GEOLOGICAL SURVEY, RESTON, VIRGINIA 22092
A FOLDER DESCRIBING TOPOGRAPHIC MAPS AND SYMBOLS IS AVAILABLE ON REQUEST