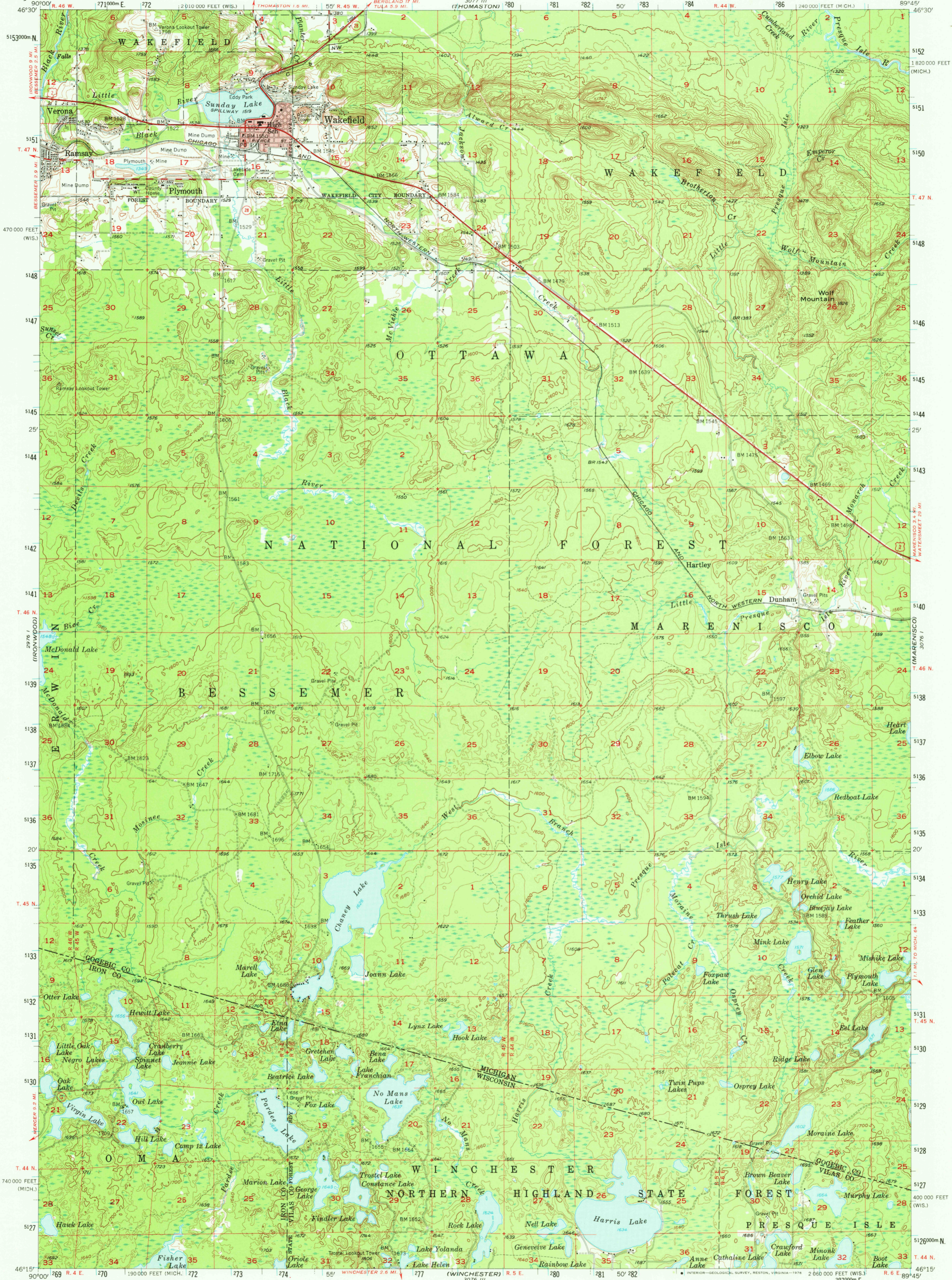
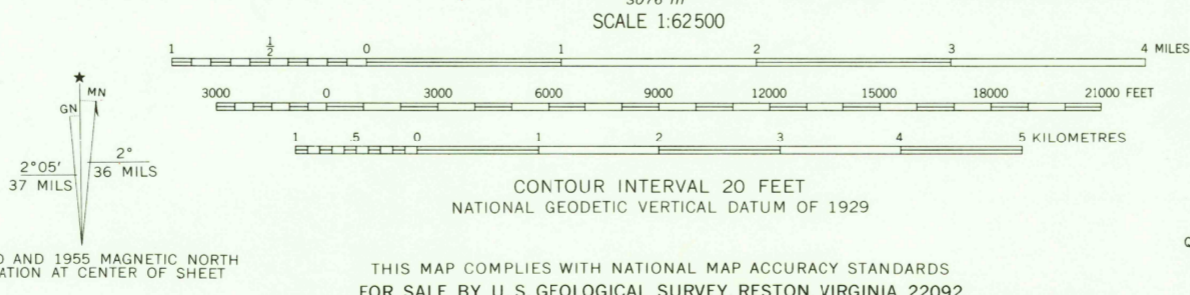


UNITED STATES
DEPARTMENT OF THE INTERIOR
GEOLOGICAL SURVEY

WAKEFIELD QUADRANGLE
MICHIGAN-WISCONSIN
15 MINUTE SERIES (TOPOGRAPHIC)



Mapped, edited, and published by the Geological Survey
Control by USGS and USC&GS
Topography from aerial photographs by Kesh plotter
Aerial photographs taken 1951. Field check 1955
Polyconic projection. 1927 North American datum
10,000-foot grids based on Michigan coordinate system,
west zone, and Wisconsin coordinate system, north zone
Red tint indicates area in which only
landmark buildings are shown
Unchecked elevations are shown in brown
1000-metre Universal Transverse Mercator grid ticks,
zone 16, shown in blue



ROAD CLASSIFICATION
Heavy-duty ——— Light-duty ———
Medium-duty ——— Unimproved dirt ———
U. S. Route ——— State Route ———

The north half of this area also covered by 1:24000
scale maps of Wakefield NE and Wakefield,
7.5 minute quadrangles, surveyed 1955

WAKEFIELD, MICH.-WIS.
N 4615-W 8945/15
1955
AMS 3076 IV-SERIES V762

THIS MAP COMPLIES WITH NATIONAL MAP ACCURACY STANDARDS
FOR SALE BY U. S. GEOLOGICAL SURVEY, RESTON, VIRGINIA 22092
AND WISCONSIN GEOLOGICAL AND NATURAL HISTORY SURVEY, MADISON, WISCONSIN 53706
A FOLDER DESCRIBING TOPOGRAPHIC MAPS AND SYMBOLS IS AVAILABLE ON REQUEST

USGS
Historical File
Topographic Division

MAY 20 1976