

(Hart NE)  
43° 37' 30"

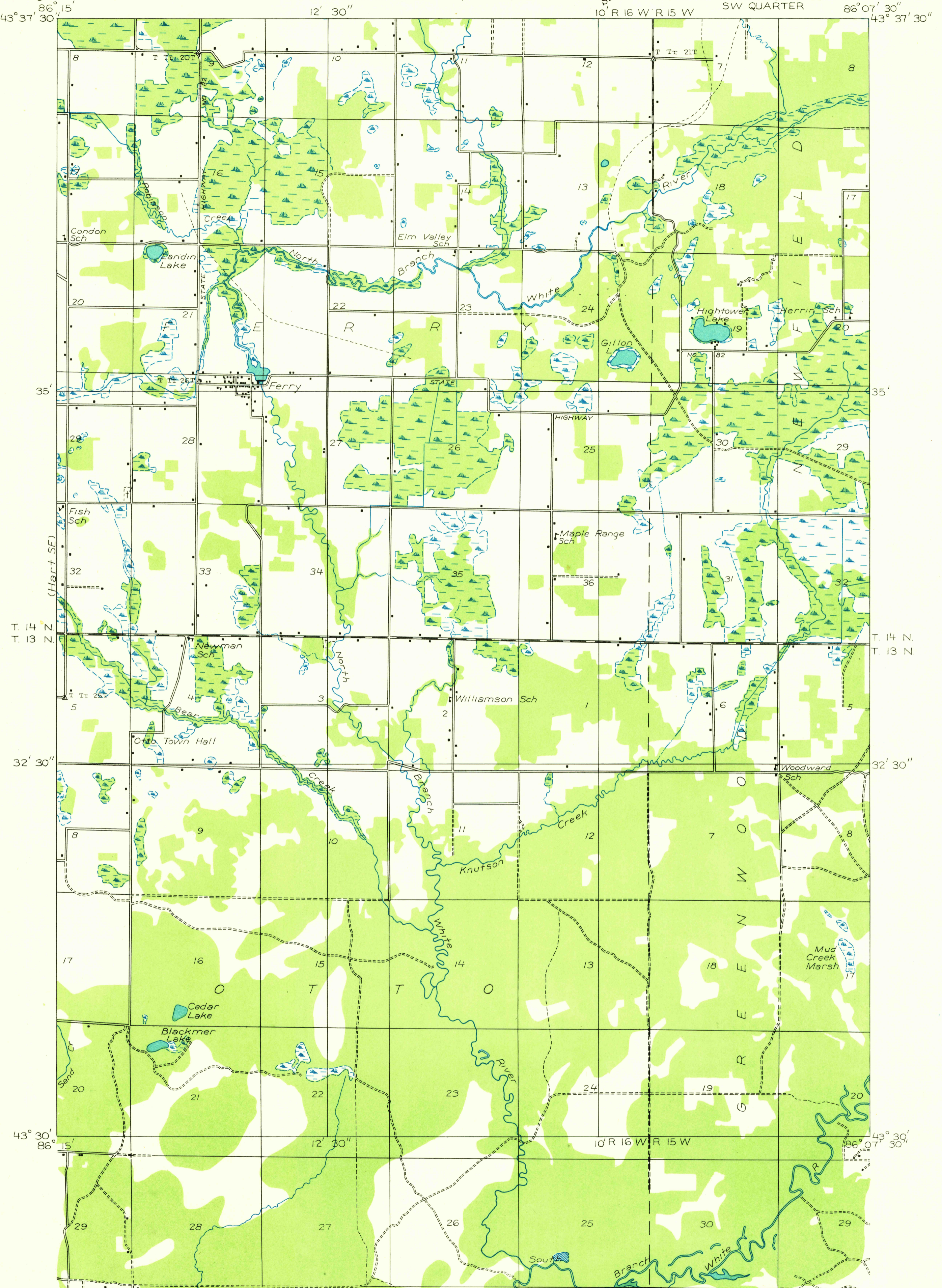
DEPARTMENT OF THE INTERIOR  
U. S. GEOLOGICAL SURVEY

STATE OF MICHIGAN  
DEPARTMENT OF CONSERVATION  
GEO. R. HOGARTH, DIRECTOR  
GEOLOGICAL SURVEY DIVISION, R. A. SMITH, STATE GEOLOGIST

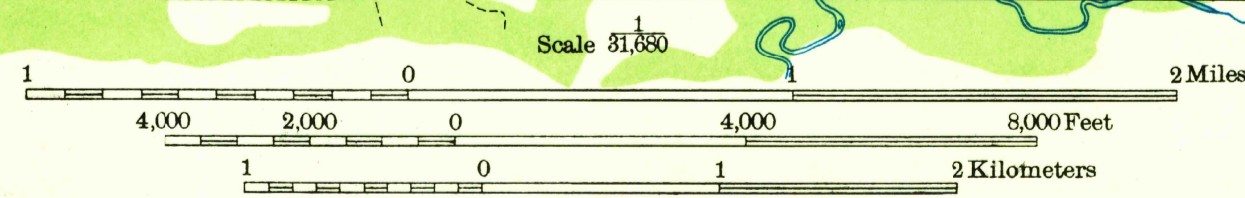
Advance sheet  
Subject to correction

MICHIGAN  
(OCEANA COUNTY)  
WALKERVILLE QUADRANGLE  
SW QUARTER

U. S. G. S.  
FILE COPY  
Inspection and Editing.



Glenn S. Smith, Division Engineer  
Compiled in part from aerial photographs  
taken by Air Corps, U. S. Army  
Control by U. S. Geological Survey  
Surveyed in 1931



Polyconic projection. North American datum  
U.S.G.S. Historical File Topographic Division

TRUE NORTH  
MAGNETIC NORTH  
APPROXIMATE MEAN  
DECLINATION, 1931

WALKERVILLE, MICH.  
SW